

Cheiromyces lignicola, a new chirosporous anamorphic species from Hong Kong

Wai-Hong Ho¹
I. John Hodgkiss
Kevin D. Hyde

Centre for Research in Fungal Diversity, Department of Ecology and Biodiversity, The University of Hong Kong, Pokfulam Road, Hong Kong

Abstract: *Cheiromyces lignicola* sp. nov. is described and illustrated from a freshwater stream in Hong Kong. The species is characterized by chiroid, yellowish brown, distoseptate conidia that are composed of 3–5 arms, each terminating apically in an inflated cell. The developmental stages of the inflated apical cell are illustrated. *Cheiromyces lignicola* is compared with other *Cheiromyces* species, and other taxa that produce chiroid conidia with inflated apical cells. The taxonomic disposition of *C. cubensis* and *C. wrightii* in *Cheiromyces* is also discussed. Keys to species of *Cheiromyces* and to 26 anamorphic genera that produce chiroid conidia are provided.

Key Words: aquatic fungi, chiroconidia, freshwater fungi, hyphomycetes, lignicolous fungi, systematics, taxonomy

INTRODUCTION

In a continuing study of freshwater mycota in the tropics (Ho et al 1997, 1999a, b, c, Goh et al 1998b, Hyde et al 1999), an undescribed dematiaceous hyphomycete was found on wood baits of *Machilus velutina* Champ. and *Pinus massoniana* Lamb. and wood naturally submerged in a small stream in Hong Kong. This fungus produced chiroid conidia in sporodochia. Morphological characters indicate that it is an undescribed species of *Cheiromyces* Berk. & M. A. Curtis.

Cheiromyces was described by Berkeley (1875) with *C. stellatus* Berk. & M. A. Curtis as the only species. Two specimens were cited in the protologue, viz. No. 4883, on culms of *Scirpus eriophorus*, and No. 5087, on “a *Sphaeropsis*.” Berkeley described *C. stellatus* as having nonseptate conidia. However, based on an examination of specimen No. 5087, Martin (1944) and

Damon (1950) established that the genus has septate conidia, and characterized it as such. Subsequently, Sutton (1985) designated specimen No. 4883 as lectotype, and restricted the genus to species having distoseptate conidia. Nine species producing euseptate conidia were excluded by Sutton (1985), leaving the genus monospecific.

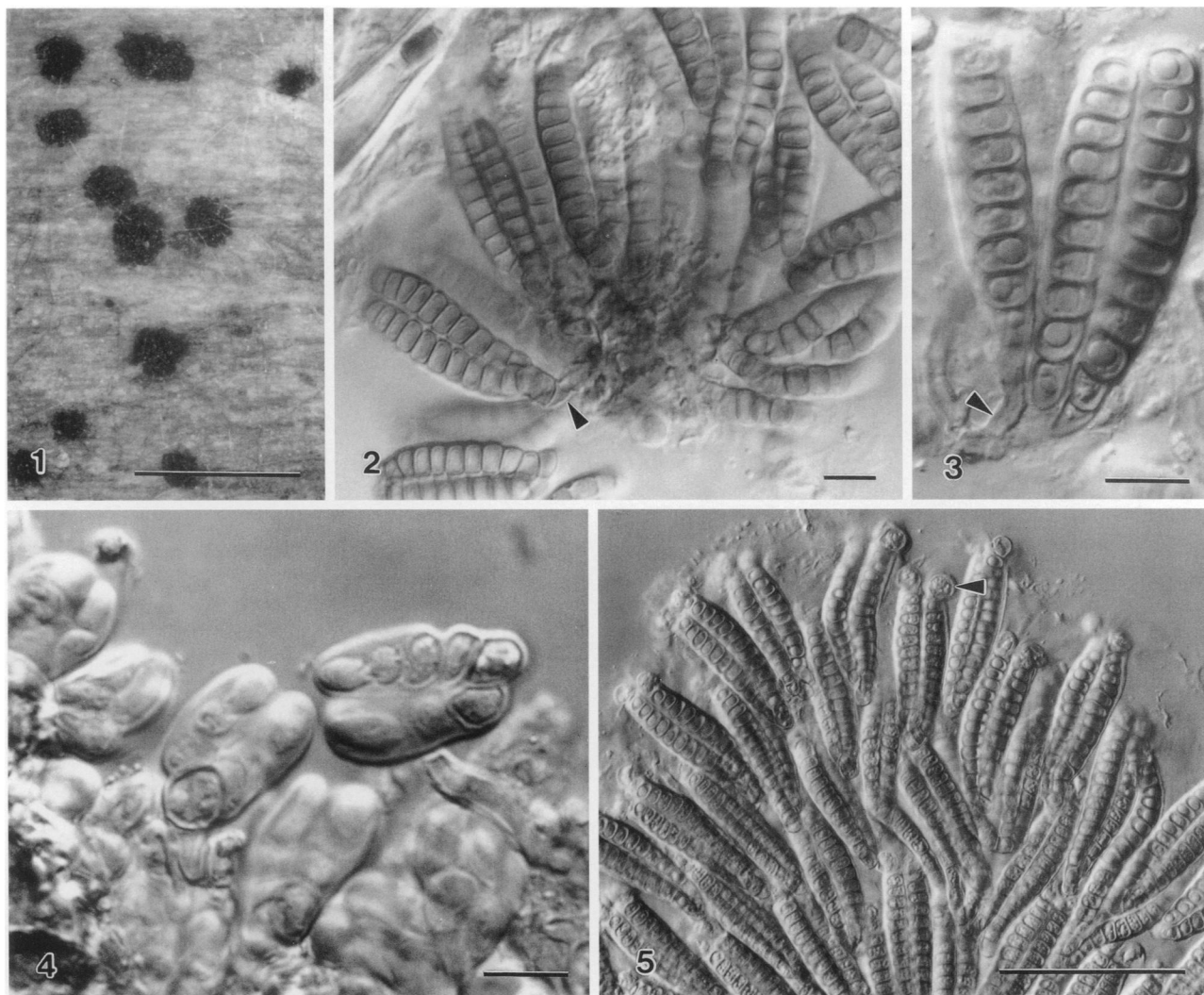
Three additional species have been described: *C. cubensis* Matsush., from decaying leaf rachis of royal palm, *Roystonea regia* (Kunth) Cook, in Cuba, *C. recurvus* V. G. Rao & De Hoog from rotten wood in India and *C. wrightii* Aramb. et al on wood and bark from the Santiago River in Argentina. The conidia of *C. cubensis* and *C. wrightii* are apparently euseptate (Arambarri et al 1987, Matsushima 1987) and possibly these species should not be included in *Cheiromyces*. No *Cheiromyces* species has been linked to a teleomorph.

The lectotype specimen of *C. stellatus* is characterized by the presence of punctiform, sporodochial conidiomata that lack obvious conidiophores, discrete, monoblastic conidiogenous cells that do not proliferate; holoblastic, pale brown conidia that are composed of a truncate basal cell upon which 3–5 straight, vertical, appressed or slightly divergent, cylindrical, distoseptate arms are formed in different planes; and schizolytic secession (Sutton 1985). The conidia of *C. recurvus* possess 5–6 arms that are 10–14-distoseptate, with a marked ring of pigmentation around the septal pores (Rao and De Hoog 1986). In *C. cubensis*, conidia have 1–5 (mostly 4) arms that are 5–15-septate and constricted at the septa (Matsushima 1987), while in *C. wrightii*, conidia possess 3–5 arms that are 3–5-septate and constricted at the septa (Arambarri et al 1987).

TAXONOMY

Cheiromyces lignicola W. H. Ho, K. D. Hyde et I. J. Hodgkiss, sp. nov. FIGS. 1–12

Conidiomata sporodochia, sparsa, punctiformia, pulvinata, atrobrunnea vel atra, 150–350 µm diam. Mycelium in substrato immersum, ex hyphis pallide brunneis, laevibus, tenuitunicatis, septatis, ramosis compositum. Conidiophora absens. Cellulae conidiogene monoblasticae, integratae, terminales, determinatae, hyalinae vel pallide brunneae, oblongae, 5–7.5 × 3.5–5 µm, laeve, tenuitunicatae, maturere insimul, non proliferatibus. Conidia acrogenosa, holo-

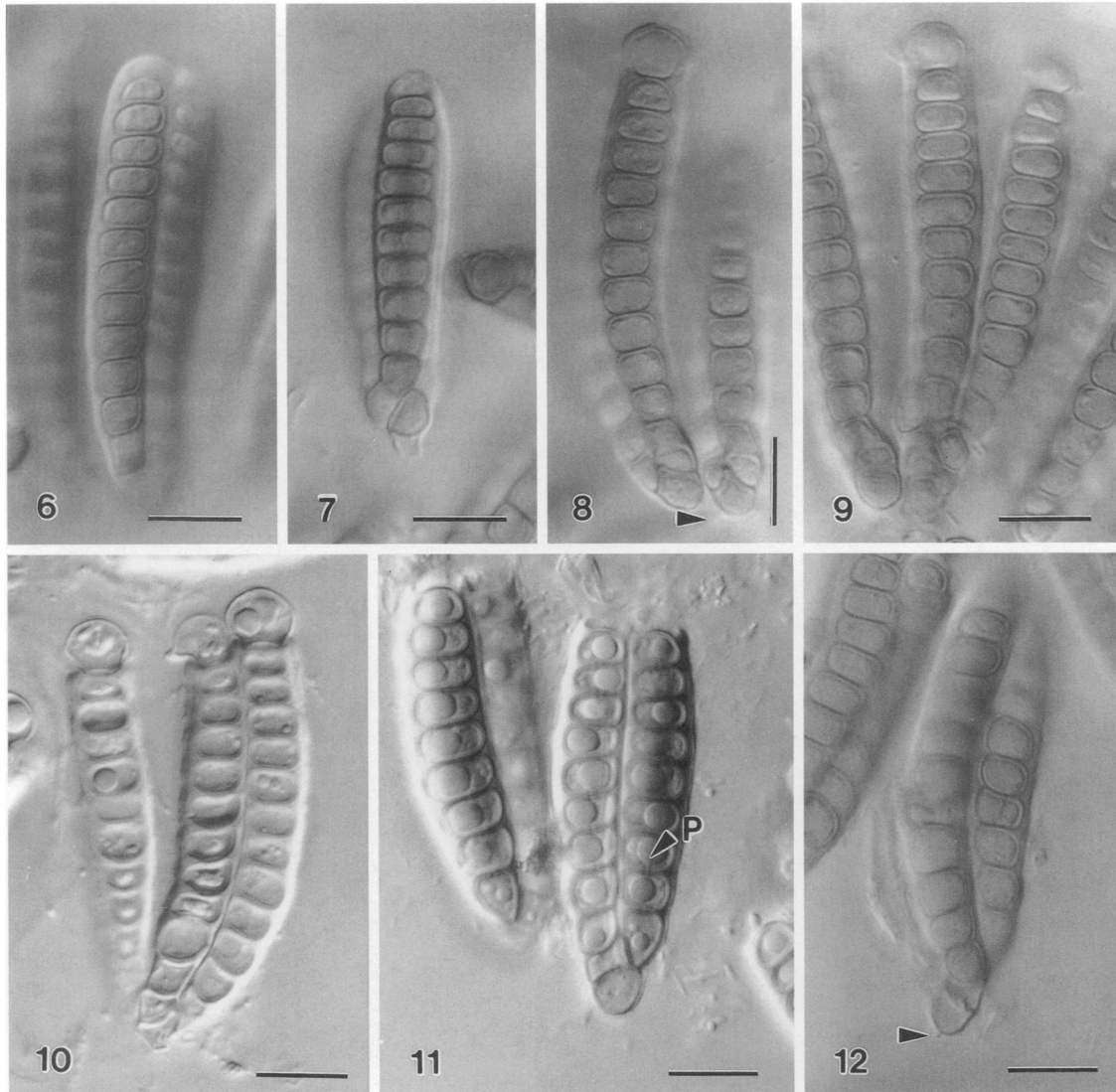


FIGS. 1-5. *Cheiromyces lignicola* (from HOLOTYPE). 1. Sporodochia on wood substratum. 2, 3. Conidia in sporodochia, illustrating the conidiogenous cells (arrowheads). 4. Immature hyaline conidia. 5. Mass of mature conidia. Note the inflated apical cells (arrowhead). 1. Stereo micrograph. 2-5. Interference light micrographs. 2. In lacto-phenol. 3-5. In water. Bars: 1 = 1 mm; 2-4 = 10 μm ; 5 = 50 μm .

blastica, solitaria, hyaline cum immatura, pallide fulva ad maturita, chiroidea, $30-60 \times 10-14 \mu\text{m}$, distoseptata, cum 3-4(-5) rami praedita, verticalia; cellula basilaris pallide brunnea, truncata, $3-5.5 \times 3.5-4.5 \mu\text{m}$, laevia, tenuitunicata; rami discreti, non ramosi, dense appressi vel modice divergenti, cylindrici, $28-55 \times 6-8 \mu\text{m}$, 5-12-distoseptati, ad septa haud constricti, omne brachi cum celluli apicalis turgidi; cellula apicalis turgidus hyalina, globosa vel subglobosa, $5-7.5 \mu\text{m}$ diam, laevia, crassitunicata, tum tenuitunicata, postremo fastiscens. *Conidiorum secessio* rhexolytica.

Conidiomata sporodochial, scattered, punctiform, pulvinate, dark brown to black, $150-350 \mu\text{m}$ diam (FIG. 1). Mycelium immersed in the substratum, composed of pale brown, smooth, thin-walled, septate, branched hyphae. Conidiophores absent. Conidiogenous cells monoblastic, integrated, terminal, determinate, hyaline or pale brown, oblong, $5-7.5 \times$

$3.5-5 \mu\text{m}$, smooth, thin-walled, giving rise to a single crop of conidia that mature synchronously, not proliferating (FIGS. 2, 3). Conidia acrogenous, holoblastic, solitary, hyaline when immature, pale yellowish brown at maturity, chiroid, $30-60 \times 10-14 \mu\text{m}$ ($\bar{x} = 47 \times 11.8 \mu\text{m}$, $n = 30$), distoseptate, with 3-4(-5) arms vertically inserted, in different planes, on basal cells (FIGS. 4-12); basal cells pale brown, truncate, $3-5.5 \times 3.5-4.5 \mu\text{m}$, smooth, thin-walled (FIGS. 4, 7, 11, 12); arms discrete, unbranched, closely appressed to each other or slightly divergent, cylindrical, $28-55 \times 6-8 \mu\text{m}$, 5-12-distoseptate, not constricted at the septa, each arm with an inflated apical cell (FIGS. 5-12); inflated apical cells hyaline, globose to subglobose, $5-7.5 \mu\text{m}$ diam, smooth, with wall that is initially thick (FIGS. 6-9), but thin at later stages (FIG. 10),



FIGS. 6–12. *Cheiromyces lignicola* (from HOLOTYPE). 6–10. Conidia with developmental sequence of apical cells. 11. Conidia with disintegrated apical cells. Note the septal pores (P). 12. Conidia with a frill of remnants of conidiogenous cells after secession. 6–12. Interference light micrographs. 6–9, 12. In lacto-phenol. 10, 11. In water. Bars = 10 μ m.

and may eventually disintegrate (FIG. 11). Conidial secession rhexolytic (FIG. 12).

Materials examined. HONG KONG. Tai Po Kau Forest Stream, on submerged decaying wood, 29 Dec 1996, W. H. Ho & S. Y. Ho WH316 [HOLOTYPE HKU(M) 5937]; on submerged wood, 29 Mar 1997, W. H. Ho [HKU(M) 5982]; on *Machilus velutina* wood bait, 29 Mar 1997, W. H. Ho [HKU(M) 6039]; on *Pinus massoniana* wood bait, 28 Jun 1997, W. H. Ho [HKU(M) 6146].

Etymology. In reference to the woody substratum.

Known distribution. Hong Kong.

Habitat. Saprobic on decaying wood in streams.

Teleomorph. Unknown.

Commentary. *Cheiromyces lignicola* differs from the type species, *C. stellatus*, and from *C. recurvus*, both of which also produce distoseptate conidia. Conidia

in *C. lignicola* are pale yellowish brown with 3–5 apically inflated conidial arms. Conidia in *C. stellatus* are brown with 3–5 conidial arms that have longer apical cells (Sutton 1985), while conidia in *C. recurvus* are pale brown with 5–6 apically recurved conidial arms (Rao and De Hoog 1986). In *C. recurvus*, marked rings of pigmentation, visible in lateral view as a dark brown disc, are present in all conidium delimiting and conidial septa (Rao and De Hoog 1986). Similar rings are not found in *C. stellatus* (Sutton 1985) or in *C. lignicola*. A pigmented ring surrounding septal pores has been recorded in euseptate conidia in other fungi, such as *Digitodesmium recurvum* W. H. Ho et al (Ho et al 1999a); in distoseptate conidia, as found in *Pyricularia peruamazonica* Matsush. (Mat-

sushima 1993); or in conidia with both distosepta and eusepta, as found in *Janetia curviapicis* Goh & K. D. Hyde (Goh and Hyde 1996). A pigmented septal ring is recognized as a generic character in *Canalisporium* Marvanová (Goh et al 1998a). *Bactrodesmium* Cooke (Ellis 1971) includes species with and without the pigmented ring.

Cheiromyces lignicola is distinguished by its conidial arms with inflated apical cells. Developmental stages of the apical cells are illustrated in FIGS. 6–10. It is evident that the apical cells are initially thick-walled; this development is followed by an increase in size, and subsequently the outer wall disintegrates leaving the thin inner wall. The apical cells disintegrate at maturity (FIG. 2, 3, 11). Conidia failed to germinate on water agar and potato dextrose agar at 24 C.

Several fungi with euseptate conidia produce conidia with inflated apical cells. *Cheiromyces inflatus* Matsush. produces such conidia (Matsushima 1983). Sutton (1985) considered this fungus better placed in *Cheiromycella* Höhn. because of its euseptate conidia. *Cheiromyces lignicola* can be compared to *Cheiromycella moniliphora* Matsush. (Matsushima 1981), *Dictyosporium alatum* Van Emden (1975), *D. bulbosum* Tzean & Chen (Tzean and Chen 1989) and *D. digitatum* Chen et al (1991), all of which produce chiroid conidia with inflated apical cells. All of these latter species produce euseptate conidia, however, clearly distinguishing them from *C. lignicola*.

Placement of *C. cubensis* and *C. wrightii* in *Cheiromyces* appears to be inappropriate. As mentioned earlier, the initial concept of *Cheiromyces* was confused because the syntypes had, respectively, euseptate and distoseptate conidia. Sutton (1985) restricted the genus to species that produce distoseptate conidia. The line drawings that accompany the descriptions of *C.*

cubensis and *C. wrightii* suggest that these species are euseptate (Matsushima 1987, Arambarri et al 1987); if this is the case, they must be redispersed. Examination of the original material is necessary before such disposition can be made.

Conidial secession in *C. lignicola* is rhexolytic. Following secession, some conidia retain a basal frill that consists of wall remnants of the conidiogenous cell. Conidial secession in *C. stellatus* was described as schizolytic (Sutton 1985), while the illustrations of *C. recurvus* indicated no remnants of conidiogenous cell at the base of the detached conidia (Rao and DeHoog 1986). It is possible that conidia with a basal frill were overlooked, as was the case in *Canalisporium*. In *Canalisporium*, conidia were described as seceding schizolytically (Nawawi and Kuthubutheen 1989), but secession in the latter was shown to be rhexolytic (Goh et al 1998a).

KEY TO SPECIES OF *CHEIROMYCES*

A key to species of *Cheiromyces*, including the doubtful species *C. cubensis* and *C. wrightii*, is based on literature.

1. Conidia with inflated apical cells 2
1. Conidia without inflated apical cells 3
 2. Conidia with 3–5 conidial arms; conidial arms 28–55 × 6–8 μm, unbranched, 5–12 septate, without constriction at the septa *C. lignicola*
 2. Conidia with 1–5 conidial arms; conidial arms 20–60 × 3–5 μm, branched near the basal cells, 5–15 septate, with slight constriction at the septa *C. cubensis*
3. Conidia with recurved apical cells *C. recurvus*
3. Conidia without recurved apical cells 4
 4. Conidial arms 23–30 × 4–6 μm, without constriction at the septa *C. stellatus*
 4. Conidial arms 13–22 × 4–5 μm, with slight constriction at the septa *C. wrightii*

KEY TO CHIROSPOROUS GENERA

In addition to *Cheiromyces*, 26 genera of anamorphic fungi produce chiroid conidia. Of these, 2 produce distoseptate conidia and 24 produce euseptate conidia. A key to these genera, based on literature, is provided.

1. Conidia distoseptate 2
1. Conidia euseptate 3
 2. Conidial arms arising from single basal cells, conidia formed at one level, nonlichenized *Cheiromyces*
 2. Conidial arms formed from a series of dichotomous branches, conidia formed at many levels, lichenized *Cheiromycina* B. Sutton (Sutton and Muhr 1986, Hawksworth and Poelt 1990)
3. Conidia recurved, forming arms pointing downwards 4
3. Conidia not forming arms pointing downwards 7
 4. Conidiomata sporodochial *Cryptocoryneum* Fuckel (Ellis 1971)
 4. Conidiomata not sporodochial 5
5. Conidiophores micronematous *Digitosarcinella* S. Hughes (Hughes 1984)
5. Conidiophores macronematous 6
 6. Conidiogenous cells enteroblastic, proliferating percurrently *Eversia* J. L. Crane & Schokn. (Schoknecht and Crane, 1977, Holubová-Jechová 1987)
 6. Conidiogenous cells holoblastic, not proliferating *Cryptocoryneopsis* B. Sutton (Sutton 1980a)

7. Conidial arms not appressed laterally 8
7. Conidial arms appressed laterally at least at the lower portion 20
8. Conidiomata sporodochial 9
8. Conidiomata not sporodochial 14
9. Conidiogenous cells proliferating 10
9. Conidiogenous cells not proliferating 12
10. Conidiogenous cells enteroblastic, proliferating percurrently .. *Ramoconidiifera* B. Sutton et al (Sutton et al. 1996)
10. Conidiogenous cells holoblastic, proliferating sympodially 11
11. Conidiophores constricted strongly at the septa, composed mainly of swollen conidiogenous cells that are sometimes connected to one another by narrow isthmi *Cheiromycella* Höhn (Sutton 1985)
11. Conidiophores cylindrical, cells not constricted at the septa .. *Dicranidion* Harkn. (Peek and Solheim 1958, Ando and Tubaki 1984)
12. Conidial arms seceding at the basal cell .. *Petrakiopsis* Subram. & K. R. C. Reddy (Subramanian and Reddy 1968)
12. Conidial arms remaining intact 13
13. Conidial arms not branching *Digitodesmium* P. M. Kirk (Kirk 1981b, Ho et al. 1999a)
13. Conidial arms branch, with all arms parallel with and connected to each other at intermediate length of the conidia *Amallospora* Penz. (Penzig 1897, Carmichael et al 1980)
14. Conidiomata acervular *Sirothecium* P. Karst. (Sutton 1980b, 1985)
14. Conidiomata not acervular 15
15. Conidiogenous cells enteroblastic, with proliferation 16
15. Conidiogenous cells holoblastic, not proliferating 17
16. Conidiogenous cells proliferating percurrently .. *Ceratosporella* Höhn. (Kuthubutheen and Nawawi 1991, Castañeda-Ruiz et al. 1996)
16. Conidiogenous cells proliferating sympodially *Dendryphion* Wallr. (Carmichael et al 1980)
17. Conidial arms branch from the basal cells in whorl-shape *Nidulispora* Nawawi & Kuthub. (Nawawi and Kuthubutheen 1990)
17. Conidial arms branch at different level 18
18. Conidia branch dichotomously *Cladoconidium* Bandoni & Tubaki (Bandoni and Tubaki 1985)
18. Conidia branched irregularly 19
19. Conidiophores micronematous *Taeniolina* M. B. Ellis (Ellis 1976, Kirk 1981a, Crane and Schoknecht 1981)
19. Conidiophores macronematous *Goosiomyces* N. K. Rao & Manohar. (Rao and Manoharachary 1989)
20. Conidial arms appressed laterally from the base to the apex 21
20. Conidial arms appressed laterally at the lower portion, with separating arms at the apex 24
21. Conidiomata sporodochial, conidiogenous cells not proliferating *Dictyosporium* Corda (Goh et al. 1999)
21. Conidiomata not sporodochial, conidiogenous cells proliferating 22
22. Conidiogenous cells holoblastic, proliferating sympodially *Cheiromoniliophora* Tzean & J. L. Chen (Tzean and Chen 1990, Castañeda-Ruiz et al. 1997a, b)
22. Conidiogenous cells enteroblastic, proliferating percurrently 23
23. Conidiophores macronematous, with oval basal cells on tubular conidiophores ... *Pseudodictyosporium* Matsush. (Matsushima 1971)
23. Conidiophores semi-macronematous, conidiogenous cells composed of spherical, verruculose, catenulate cells *Cheiropolyschema* Matsush. (Matsushima 1980, Bhat and Kendrick 1993)
24. Conidiogenous cells holoblastic, not proliferating .. *Tetraploa* Berk. & Broome (Ellis 1971, Arambarri et al. 1987, Rifai et al. 1988)
24. Conidiogenous cells enteroblastic, with or without proliferation 25
25. Conidiogenous cells not proliferating *Tretospeira* Piroz. (Ellis 1976)
25. Conidiogenous cells proliferating percurrently 26
26. Conidial arms in different planes *Hughesinia* J. C. Lindq. & Gamundí (Lindquist and Gamundí 1970)
26. Conidial arms in one plane *Piricaudiopsis* J. Mena & Mercado (Mena-Portales and Mercado-Sierra 1987, Bhat and Kendrick 1993)

ACKNOWLEDGMENTS

The authors thank the staff in the Photographic Unit of the Faculty of Science, The University of Hong Kong for photographic assistance. Ms. Helen Y. M. Leung is thanked for technical assistance. W. H. Ho would like to thank The University of Hong Kong for the award of a postgraduate studentship.

LITERATURE CITED

- Ando K, Tubaki K. 1984. Some undescribed hyphomycetes in rainwater draining from intact trees. *Trans Mycol Soc Japan* 25:39-48.
- Arambarri A, Cabello M, Mengascini A. 1987. New hyphomycetes from Santiago River. II. (Buenos Aires Province, Argentina). *Mycotaxon* 30:263-268.

- Bandoni RJ, Tubaki K. 1985. *Cladoconidium*: a new hyphomycete anamorph-genus. *Trans Mycol Soc Japan* 26: 425–431.
- Berkeley MJ. 1875. Notices of north American fungi. *Grevillea* 3:97–112.
- Bhat DJ, Kendrick WB. 1993. Twenty-five new conidial fungi from the western Ghats and the Andaman Islands (India). *Mycotaxon* 49:19–90.
- Carmichael JW, Kendrick WB, Connors IL, Sigler L. 1980. *Genera of Hyphomycetes*. Edmonton, Alberta, Canada: The University of Alberta Press. 386 p.
- Castañeda-Ruiz RF, Guraró J, Cano J. 1996. Notes on conidial fungi: X. A new species of *Ceratosporella* and some new combinations. *Mycotaxon* 60:275–281.
- , ———, ———. 1997a. Notes on conidial fungi: XI. Two new species of *Cheiromoniliophora* and *Oncopodium*. *Mycotaxon* 61:319–326.
- , ———, Figueras MJ, Gene J, Cano J. 1997b. More conidial fungi from La Gomera, Canary Islands, Spain. *Mycotaxon* 65:121–131.
- Chen JL, Hwang CH, Tzean SS. 1991. *Dictyosporium digitatum*, a new hyphomycete from Taiwan. *Mycol Res* 95: 1145–1149.
- Crane JL, Schoknecht JD. 1981. Revision of *Torula* spp.: *Pseudoaegerita corticalis*, new genus new combination, *Taeniolina deightonii*, new species and *Xylohypha bowdichiae*, new combination. *Mycologia* 73:78–87.
- Damon SC. 1950. A taxonomic consideration of two cheirosporous genera, *Cheiromyces* and *Pedilospora*. *Mycologia* 42:554–562.
- Ellis MB. 1971. Dematiaceous hyphomycetes. Kew, Surrey, UK: Commonwealth Mycological Institute. 608 p.
- . 1976. More dematiaceous hyphomycetes. Kew, Surrey, UK: Commonwealth Mycological Institute. 507 p.
- Goh TK, Ho WH, Hyde KD, Whitton SR, Umali TE. 1998a. New records and species of *Canalisporium* (Hyphomycetes), with a revision of the genus. *Can J Bot* 76:142–152.
- , Hyde KD. 1996. *Janetia curviapicis*, a new species, and an emended description of the genus. *Mycologia* 88:1014–1021.
- , ———, Ho WH. 1998b. *Aquaphila albicans* gen. et sp. nov. (Hyphomycetes) from submerged wood in the tropics. *Mycol Res* 102:587–592.
- , ———, Yanna. 1999. A revision of the genus *Dictyosporium*, with descriptions of three new species. *Fung Divers* 2:65–100.
- Hawksworth DL, Poelt J. 1990. A second lichen-forming species of *Cheiromycina* from Austria. *Lichenologist* 22: 219–224.
- Ho WH, Hyde KD, Hodgkiss IJ. 1997. Ascomycetes from tropical freshwater habitats: the genus *Savoriyella*, with two new species. *Mycol Res* 101:803–809.
- , ———, ———. 1999a. *Digitodesmium recurvum*, a new species of chirosporous hyphomycetes from Hong Kong. *Mycologia* 91:900–904.
- , ———, ———. 1999b. Ultrastructural study of *Annulatascus aquaticolus* sp. nov., a freshwater ascomycete. *Fung Divers* 2:119–128.
- , Ranghoo VM, Hyde KD, Hodgkiss IJ. 1999c. Ascal ultrastructural study in *Annulatascus hongkongensis* sp. nov., a freshwater ascomycete. *Mycologia* 91:885–892.
- Holubová-Jechová V. 1987. Studies on Hyphomycetes from Cuba: V. Six new species of dematiaceous Hyphomycetes from Havana Province. *Ceská Mykol* 41:29–36.
- Hughes SJ. 1984. *Digitosarcinella caseariae* n. gen., n. sp. and *Questierella synanamorphs* of the so-called *Amazonia caseariae*. *Can J Bot* 62:2208–2212.
- Hyde KD, Ho WH, Tsui KM. 1999. The genera *Aniptodera*, *Halosarpheia*, *Nais* and *Phaeoectriella* from freshwater. *Mycoscience* 40:165–183.
- Kirk PM. 1981a. New or interesting microfungi: dematiaceous hyphomycetes from Devon, England, UK. *Trans Br Mycol Soc* 76:71–88.
- . 1981b. New or interesting microfungi. *Trans Br Mycol Soc* 77:279–297.
- Kuthubutheen AJ, Nawawi A. 1991. A new species of *Ceratosporella* and *Triposporium lambdaseptatum*, new combination (Matsush.) from Malaysia. *Mycol Res* 95:158–162.
- Lindquist JC, Gamundi IJ. 1970. *Hughesinia*, nuevo genero de Hifomicetes (Demaciacea). *Boln Soc Argent Bot* 13: 53–57.
- Martin GW. 1944. The fungus genus *Cheiromyces*, with description of a new species. *J Wash Acad Sci* 34:358–360.
- Matsushima T. 1971. Microfungi of the Solomon Islands and Papua New Guinea. Kobe, Japan: Publ by author. 78 p.
- . 1980. Saprophytic microfungi from Taiwan. Part I. Hyphomycetes. Kobe, Japan: Publ by author. 82 p.
- . 1981. Matsushima mycological memoirs No. 2. Kobe, Japan: Publ by author. 68 p.
- . 1983. Matsushima mycological memoirs No. 3. Kobe, Japan: Publ by author. 89 p.
- . 1987. Matsushima mycological memoirs No. 5. Kobe, Japan: Publ by author. 100 p.
- . 1993. Matsushima mycological memoirs No. 7. Kobe, Japan: Publ by author. 75 p.
- Mena-Portales J, Mercado-Sierra A. 1987. *Piricaudiopsis* (Hyphomycetes, Deuteromycotina), nuevo genero enteroblastico de Cuba. *Acta Bot Cubana* 51:1–5.
- Nawawi A, Kuthubutheen AJ. 1989. *Canalisporium*, a new genus of lignicolous hyphomycetes from Malaysia. *Mycotaxon* 34:475–487.
- , ———. 1990. *Nigulispora* gen. nov., a hyphomycete genus with crateriform conidia. *Mycotaxon* 36:329–336.
- Peek CA, Solheim WG. 1958. The hyphomycetous genera of H. W. Harkness and the ascomycetous genus *Cleistosoma* Harkn. *Mycol* 50:844–861.
- Penzig O. 1897. *Amallospora*, nuovo genere di Tuberculariea. *Malpighia* 11:461–464.
- , Rao VG, De Hoog GS. 1986. New or critical hyphomycetes from India. *Stud Mycol* 28:1–84.
- , Manoharachary C. 1989. *Goosiomyces*, a new genus of dematiaceous hyphomycetes from Andhra Pradesh, India. *Mycol Res* 92:249–251.
- Rifai MA, Zainuddin H, Cholil A. 1988. The Javanese species of *Tetraploa*. *Reinwardtia* 10:419–424.
- Schoknecht JD, Crane JL. 1977. Revision of *Torula* and *Hormiscium* species. *Torula occulta*, *T. diversa*, *T. elasticae*,

- T. bigemina* and *Hormiscium condensatum* reexamined. Mycologia 69:533–546.
- Subramanian CV, Reddy KRC. 1968. *Petrakiopsis elegans*, a new Hyphomycete. Sydowia 20:339–341.
- Sutton BC. 1980a. *Cryptocoryneopsis umbraculiformis* gen. et sp. nov. from Australia. Trans Br Mycol Soc 74:393–398.
- . 1980b. The Coelomycetes. Kew, UK: Commonwealth Mycological Institute. 696 p.
- . 1985. Notes on some deuteromycete genera with cheiroid or digitate brown conidia. Proc Indian Acad Sci (Pl Sci) 94:229–244.
- , Carmarán CC, Romero AI. 1996. *Ramoconidiifera*, a new genus of hyphomycetes with cheiroid conidia from Argentina. Mycol Res 100:1337–1340.
- , Muhr LE. 1986. *Cheiromycina flabelliformis* gen. et sp. nov. on *Picea* from Sweden. Nord J Bot 6:831–836.
- Tzean SS, Chen JL. 1989. Two new species of *Dictyosporium* from Taiwan. Mycol Res 92:497–502.
- , ———. 1990. *Cheiromoniliophora elegans* gen. et sp. nov. (Hyphomycetes). Mycol Res 94:424–427.
- Van Emden JH. 1975. Three new fungi from Surinam soil. Acta Bot Neerl 24:193–197.