

Automated Machine Learning in the smart construction era: Significance and accessibility for industrial classification and regression tasks

Rui Zhao^{1*}, Zhongze Yang², Dong Liang³, Fan Xue⁴

This is the authors' version of the paper:

Zhao, R., Yang, Z., Liang, D., & Xue, F. (2023). Automated Machine Learning in the smart construction era: Significance and accessibility for industrial classification and regression tasks. *Proceedings of the 28th International Symposium on Advancement of Construction Management and Real Estate (CRIOCM2023)*, Springer, in press.

This file is shared for personal and academic use only, under the license [CC BY-NC-ND 4.0](https://creativecommons.org/licenses/by-nc-nd/4.0/) (Non-Commercial, No Derivatives, and with an Attributed citation when you use). The final published version of this paper can be found at: [[LINK_TO_SPRINGERLINK](#)]. Any uses other than personal and academic purposes must obtain appropriate [permissions from Springer](#) first.

Abstract: This paper explores the application of automated machine learning (AutoML) techniques to the construction industry, a sector vital to the global economy. Traditional ML model construction methods were complex, time-consuming, reliant on data science expertise, and expensive. AutoML shows the potential to automate many tasks in ML construction and to create outperformed ML models. This paper aims to verify the feasibility of applying AutoML to industrial datasets for the smart construction domain, with a specific case study demonstrating its effectiveness. Two data challenges that were unique to industrial construction datasets are focused on, in addition to the normal steps of dataset preparation, model training, and evaluation. A real-world application case of construction project type prediction is provided to illustrate the accessibility of AutoML. By leveraging AutoML, construction professionals without data science expertise can now utilize software to process industrial data into ML models that assist in project management. The findings in this paper may bridge the gap between data-intensive smart construction practices and the emerging field of AutoML, encouraging its adoption for improved decision-making, project outcomes, and efficiency.

Keywords: Machine learning; automated machine learning; smart construction; construction industry.

1 Introduction

The construction industry plays a vital role in the global economy, and the ability to make informed decisions is crucial for successful project execution^[1]. Smart construction is an

¹ Rui Zhao

Department of Real Estate and Construction, The University of Hong Kong, Hong Kong, China
E-mail: jeremyrui.zhao@connect.hku.hk

*: Corresponding author

² Zhongze Yang

Department of Real Estate and Construction, The University of Hong Kong, Hong Kong, China
E-mail: zoeayang@connect.hku.hk

³ Dong Liang

Department of Real Estate and Construction, The University of Hong Kong, Hong Kong, China
E-mail: leodong@hku.hk

⁴ Xue Fan

Department of Real Estate and Construction, The University of Hong Kong, Hong Kong, China
E-mail: xuef@hku.hk

20 evolution within the construction industry that leverages digital technology and advanced
building practices to improve efficiency, safety, and sustainability. Numerous researchers are
also incorporating computer technologies such as blockchain, machine learning, and digital
twins into smart construction^[2-4]. Machine learning (ML) plays a key role in the smart
construction domain. Examples of ML are supply chain anagement, quality control,
25 construction site safety, project management, and scheduling^[5].

Traditionally, constructing predictive ML models in the construction domain has been
complex and time-consuming. It requires expertise in data preprocessing, feature engineering,
algorithm selection, hyperparameter tuning, and model evaluation. With the advent of
automated machine learning (AutoML) techniques, there is an opportunity to revolutionize
30 how construction datasets are analyzed and utilized. AutoML offers the potential to streamline
and automate the process of developing machine learning models, making it accessible to
professionals without extensive data science expertise^[6]. With AutoML, many of these tasks
can be automated, significantly reducing the manual effort required^[7-8].

This paper aims to test the feasibility and accessibility of applying AutoML techniques for
35 smart construction. First, six industrial datasets from different construction fields are employed
to validate the robustness and versatility of AutoML. Furthermore, the datasets focus on several
challenges, e.g., limited data samples and imbalanced classes, which are common in
construction industrial data. For accessibility, both commercial AutoML software and open-
sourced Python libraries are involved and tested.

40 By leveraging AutoML, construction professionals can leverage the wealth of data
available in the industry, including project plans, sensor data, labor records, and more. This
data can be used to generate predictive models that can assist in various aspects of construction
project management, such as predicting project types, estimating resource requirements,
identifying potential risks, and optimizing project timelines^[9].

45 This paper aims to bridge the gap between traditional construction practices and the
emerging field of automated machine learning. By showcasing the feasibility and benefits of
AutoML in construction datasets, we aim to encourage the adoption of these techniques in the
industry, enabling more informed decision-making, improved project outcomes, and increased
efficiency.

50 **2 Related works**

2.1 Machine Learning in the construction industry

Machine learning has emerged as a valuable tool in the construction industry, offering new data
analysis and decision-making possibilities. Predictive analytics is a prominent application of
machine learning, where models trained on historical project data can forecast outcomes,
55 estimate durations, predict resource requirements, and identify potential risks and delays^[10].
These predictive capabilities enable construction professionals to optimize resource allocation,
schedule projects effectively, and proactively manage risks.

Another significant application of machine learning in construction is anomaly detection.
Machine learning algorithms can detect patterns and identify anomalies such as safety incidents,
60 equipment failures, and material shortages by analyzing sensor data, construction site images,
and other relevant sources. Early detection of anomalies enables prompt interventions, reducing
the likelihood of accidents and mitigating risks^[11].

Moreover, machine learning contributes to process optimization within the construction industry. Machine learning algorithms identify patterns and correlations that improve process efficiency by analyzing diverse datasets encompassing project designs, material properties, labor productivity, and equipment performance, which includes optimizing resource allocation, identifying bottlenecks, and suggesting alternative construction methods or materials to enhance productivity and reduce costs^[12].

2.2 Automated machine learning

Machine learning techniques have demonstrated significant potential in the construction industry but are not without limitations. One of the primary challenges is the complexity and expertise required in the manual development and fine-tuning of machine learning models^[13]. This process involves various tasks, such as data preprocessing, feature engineering, algorithm selection, and hyperparameter tuning, which can be time-consuming and require specialized knowledge^[14]. Additionally, the construction domain often deals with heterogeneous and complex datasets, making it difficult to navigate and extract meaningful insights [10] manually.

To address these limitations and streamline the machine learning process, AutoML has emerged as a promising solution. AutoML aims to automate many manual tasks involved in model development, reducing the dependency on human expertise and time-intensive processes^[15]. By automating steps such as feature engineering, algorithm selection, and hyperparameter optimization, AutoML empowers construction professionals with limited data science backgrounds to leverage machine learning effectively^[16].

In the construction domain, AutoML offers several advantages. Firstly, it simplifies the model development process by automating tasks requiring extensive manual effort, which enables construction professionals to focus more on domain-specific knowledge and problem-solving rather than the technical intricacies of machine learning^[17]. Secondly, AutoML facilitates faster model development cycles, allowing construction projects to benefit from timely insights and predictions. AutoML expedites the overall model development process by automating repetitive tasks, making it more efficient and cost-effective^[18]. Additionally, AutoML platforms often provide user-friendly interfaces and visualization tools that enable easier interpretation and communication of results to stakeholders in the construction industry.

While generative AutoML tools offer significant advantages, they are not without limitations. These include substantial computational resource requirements, time-intensive model generation and testing processes, and a lack of transparency that can complicate result interpretation and troubleshooting. The risk of overfitting is also a concern, as these tools may excessively learn from training data, leading to suboptimal performance on new data. Customization limitations may also arise, as users may occasionally wish to adjust a model in ways not supported by the tool. The effectiveness of generative AutoML tools is heavily reliant on the quality of input data; poor data quality can result in ineffective models. Finally, while some AutoML tools are freely available, others, particularly cloud-based platforms, can be costly.

3. Methodology

3.1 Research design

We utilized a comparative research design in this investigation, as illustrated in Figure 1. Our initial step involved the collection of representative industrial datasets from a variety of

110 construction issues, which were of two types: classification and regression. Following this, we embarked on selecting typical AutoML methods, a process detailed in Section 3.3 and conducted via benchmark testing. In Section 3.4, we turned our attention to establishing evaluation criteria, providing a comprehensive discussion on how these performance metrics were determined. Lastly, we concluded our study by presenting the experimental results, offering valuable insights into the effectiveness of the methods and criteria used.

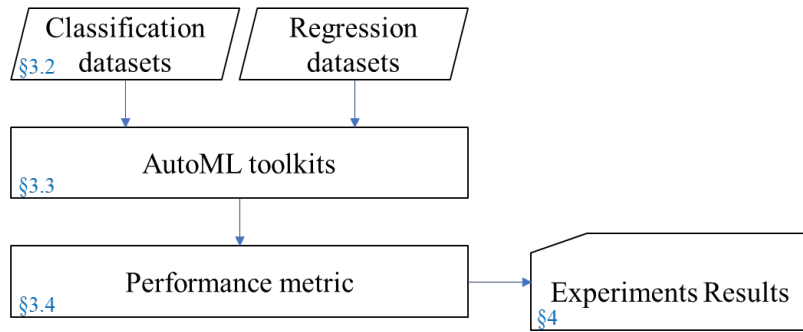


Figure 1. The research design

3.2 Datasets

115 Table II displays a collection of six datasets that pertain to the construction industry, comprised of both classification and regression datasets. These datasets present challenges from various sources, including construction projects, maintenance, materials, and real estate sales. The classification datasets contain discrete target values such as '0' or '1'^[19], while the regression datasets contain continuous values like sales data^[20]. The number of instances in these datasets ranges from 57 to 10,000. Notably, two classification datasets exhibit class imbalance, and two have limited instances, assuming a threshold of 1,000 instances. Additionally, these datasets' independent attributes range from 4 to 821. As indicated in the rightmost column of Table II, these datasets were originally published between 1998 and 2021.

125 The classification datasets include the following: The first is the 'Construction Project Type Prediction' dataset presented by Yang, Xue [21], which consists of 2,451 instances and 821 attributes. The second, titled 'Illegal Construction Waste Dumping Actions', classifies waste dumping behavior in Hong Kong through statistical dumping behavior analysis^[22]. The third classification dataset, presented by Matzka [23], reflects predictive maintenance issues encountered in the industry.

130 As for the regression datasets, the first is the 'Concrete Compressive Strength Prediction' dataset, which represents a highly nonlinear function of age and composition^[24]. The second regression dataset contains 9,568 data points collected from a cycle power plant over a span of six years. Lastly, Yeh and Hsu^[25] collected a 'Residential Valuation' dataset of unit prices from Sindian District, New Taipei City, Taiwan.

135

Table II. List of collected construction datasets from the literature.

Type	Id	Name	Target attribute	No. of instances	of Imbalance?	Limited?	No. of attributes	of Source
Classification	1	Construction project type prediction	“Building” or “Renovation”	2,451 (1826; 625)*	Yes	No	821	(Yang et al. 2021)
	2	Illegal construction waste dumping actions	“Yes” or “No”	57 (29; 28)	No [#]	Yes	54	(Lu 2019)
	3	AI4I 2020 predictive maintenance	“1” means successful or “0” means failed	10,000 (9,661; 339)	Yes	No	14	(Matzka 2020)
Regression	4	Concrete compressive strength	Concrete compressive strength	1,030	-	No	9	(Yeh I. C. 1998)
	5	Combined power plant	cycle Net hourly electrical energy	9,568	-	No	4	(Tüfekci 2014)
	6	Real Valuation	Estate Residential price	unit 415	-	Yes	6	(Yeh & Hsu 2018)

*: (Number of instances of the majority class; number of instances of the minority class)

#: Manually balanced by the author.

140

3.3 Selection of AutoML tools

AutoML is increasingly accessible to industrial users. As listed in Table I, the AutoML tools selected for analysis fall into two categories: open-source and commercial. We chose Auto-sklearn (version 0.14.2) and H2O-AutoML (version 3.34.0) from the open-source category. From the commercial category, we have selected Azure Automated ML (version 1.37.0), Vertex AI (version 0.7), and EasyDL (version 2.0.12). It's important to note that the companies behind these commercial solutions, namely Microsoft, Google, and Baidu, are prominent technology giants, particularly recognized for their contributions to cloud computing and Artificial Intelligence.

145

3.4 Performance metric

This paper aims to assess various AutoML tools using two primary criteria: performance and costs. Performance is evaluated based on two key factors: error metrics (or accuracy) and compatibility with eight industrial datasets. For classification tasks, the primary metric is the macro F1 score, defined as the harmonic mean of precision and recall, which effectively reduces the impact of imbalanced datasets. For regression tasks, the root mean square error (RMSE) is used to compare the performance of regression models. The objective is to identify the model or machine learning pipeline with the lowest RMSE and highest F1 score. Error metrics are measured using 10-fold cross-validation for each dataset.

155

Regarding costs, AutoML tools are evaluated based on computational time, license fee, and ease of learning. Computational time only includes the standard platform execution time, excluding data formatting, cleansing, and network traffic. License fees are converted to US dollars. Ease of learning is assessed based on the availability of detailed documentation, clear error indication, and illustrative results presentation. The ultimate goal is to identify an AutoML tool that offers high performance at low costs.

160

165 **4. Results and Discussion**

To conduct a comprehensive comparison of open-source and commercial AutoML tools, we tested Auto-sklearn and H2O-AutoML on a personal computer equipped with an Intel(R) Core (TM) i7-7700 CPU (quad-core 3.60 GHz), 8 GB of memory, and a 64-bit Ubuntu (version 9.0.3). The maximum execution time for Auto-sklearn was set to 5 minutes, and we used all default parameters for H2O-AutoML version 3.34.0. In contrast, the commercial solutions were run on their respective cloud services. For the Azure experiments, we utilized the cost-effective 'Standard_D2s_v3' plan, which comes with 2 CPU cores, 8 GB of memory, and 16 GB of disk space. The hardware setting for Vertex AI experiments was not specified, and we optimized for 'value log loss'. EasyDL was configured with the default settings. It's important to note that most settings for commercial solutions are controlled by their respective cloud services providers, such as Microsoft and Google.

Table III compares the performance of the recommended AutoML tools with the results achieved by human experts in the literature across six datasets, excluding two datasets without academic publications. Generally, AutoML yielded more accurate results than those reported by human experts. Azure outperformed the literature in five out of six datasets. For instance, in the AI4I 2020 predictive maintenance for machines dataset, AutoML tools significantly improved the F1 score from Matzka’s (2020) 0.79 to 0.803 (by H2O-AutoML), 0.865 (by Azure), and 0.885 (by Vertex AI). The only exception was the construction project type prediction, where Yang (2021) reported a satisfactory result with an F1 score of 0.873. The two recommended AutoML tools returned F1 scores of 0.855 and 0.843; however, Vertex AI found a slightly better result (F1 = 0.874). Azure surpassed the reported results in the literature in all the regression tasks. For example, Azure returned an R2 score of 0.94 for the concrete compressive strength dataset, which is better than the human expert’s ML result of R2 = 0.86. The RMSE reported for the real estate valuation dataset is 7.73 in the literature, and the result with EasyDL is 5.75, indicating a 26% reduction in error in terms of RMSE.

190 Table III. Comparisons of accuracy in the literature and the two recommended AutoML tools (best values in bold)

Test dataset	Performance* of ML		
	Reported literature	in Azure	H2O-AutoML
Construction project type prediction	$F_1 = \mathbf{0.873}$	$F_1 = 0.855$	$F_1 = 0.843$
Illegal construction waste dumping	$F_1 = 0.860$	$F_1 = \mathbf{0.867}$	$F_1 = 0.854$
AI4I 2020 predictive maintenance	$F_1 = 0.79$	$F_1 = \mathbf{0.865}$	$F_1 = 0.803$
Concrete compressive strength	$R^2 = 0.86$	$R^2 = \mathbf{0.92}$	-#
Combined cycle power plant	RMSE = 3.78	$\mathbf{RMSE = 3.48}$	RMSE = 6.08
Real estate valuation	RMSE = 7.73	$\mathbf{RMSE = 6.73}$	RMSE = 7.39

*: Higher is better for the first four datasets; lower is better for the last two.

#: Not reported by H2O-AutoML, but the RMSE was better than Azure’s.

195 Table IV summarizes the costs associated with various AutoML tools as observed in our benchmarking evaluations. To create a more comprehensive ranking system, we devised five additional criteria across different categories to evaluate the cost-effectiveness of these tools.

These criteria include:

- "In-house coding (20%)" indicates whether the AutoML practitioner is required to write computer codes.
- "Data type compatibility (20%)" assesses the tool's ability to handle different data types commonly found in the construction industry, thereby saving the practitioner's time from data conversion and preprocessing.
- "Minimum number of instances (15%)", which evaluates the tool's compatibility with different data volumes.
- "User friendliness (25%)" for which we invited new users with no programming skills to test the AutoML tools and collected their feedback on the software's user-friendliness.
- "Languages of user manuals (20%)" examines the range of languages available for the user manuals associated with each tool.

User friendliness is a key factor for teams with limited technical skills or for projects that require quick adoption of the tool. If ease of use is a priority, this criterion should be given more weight. If a tool is user-friendly, it can be more easily and quickly adopted by a team, especially if the team members have varying levels of technical expertise. On the other hand, the "Minimum number of instances" criterion is more specific to the technical capabilities of the tool and might not impact the user experience as directly.

According to the table, Azure achieved the highest overall score. Its exceptional efficiency, affordability, and extensive documentation make it an ideal choice for construction professionals lacking programming expertise. This high score is attributed to specific features and benefits of Azure that address the needs and challenges faced by construction practitioners.

Table IV. Overall comparison of the costs of AutoML tools used in this research (best in bold)

	Open-source		Commercial			
	Auto-sklearn	H2O-AutoML	Azure	EasyDL	Vertex AI	
Average computational time(min)	5	1	37.5	18	157.17	
Total fee (\$)	0	0	70.08	31.44	255.02	
In-house coding	Yes	Yes	No	No	No	
Data type compatibility (nominal and null values)	Numbers only	OK	OK	OK	OK	
Minimum number of instances	Any	Any	Any	Any	1,000	
User Friendliness*	Hard to use for beginners	No messages for explaining errors	Yes	Unfriendly guideline	Yes	
Languages of user manuals	English	English	Multi-language	Chinese	Multi-language	
	Wins	2	4	5	3	4

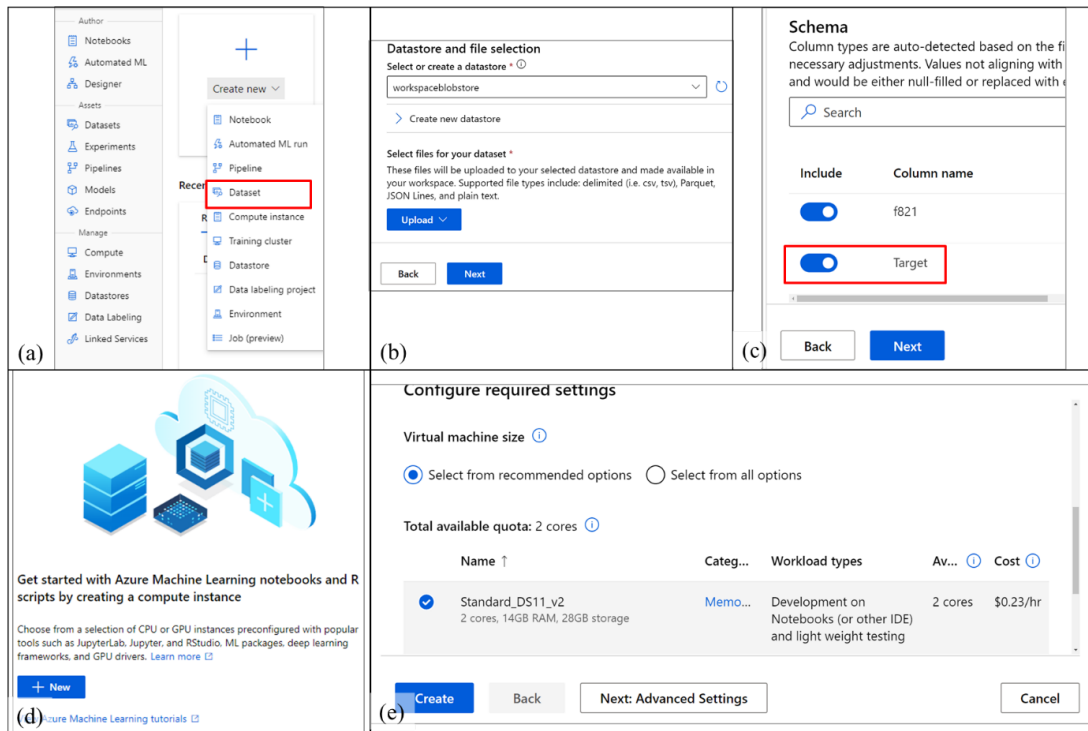
*: rated by five fresh users.

5. An application case of construction project type prediction

Step 1 consists of two parts, namely data collection and AutoML preparation. The example case's data collection, including cleansing and attribute definitions, was reported in detail by Yang et al. (2021). Figure 2 shows the AutoML preparation on Azure. Figure 2(a) shows the definition of a new dataset. Figure 2(b) shows the "datastore and file selection" dialog, where one can upload the collected dataset. The "Schema" dialog in Figure 2(c) offers a data filter to

exclude unnecessary attributes and labels, such as the unique identification columns or alternative target classes. Figure 2(d) shows the creation of an AutoML job, which automatically pops up after the data filtering. Figure 2(e) is the configuration dialog of computational resources for the defined AutoML job. We recommend the low-cost virtual machine “Standard_DS11_v2” for the small to medium sized datasets collected from the construction industry. If the dataset contains a large number (e.g., > 1 million) of instances, advanced virtual machines are recommended.

230



235

Figure 2. Demonstration of Step 1 of the AutoML guideline

In Step 2, AutoML trains (or re-trains) candidate ML models. Figure 3(a) shows that Azure offers a “+ New Automation ML Run” button to start the training. The “select data” dialog in Figure 3(b) lists the available datasets to work with. Figure 3(c) shows the “Configure Run” dialog to create a new AutoML job. Then, one can follow “classification” for discrete target classes (e.g., types of construction projects) or “regression” for continuous targets (e.g., property sales) in the job settings in Figure 3(d) to start the AutoML.

240

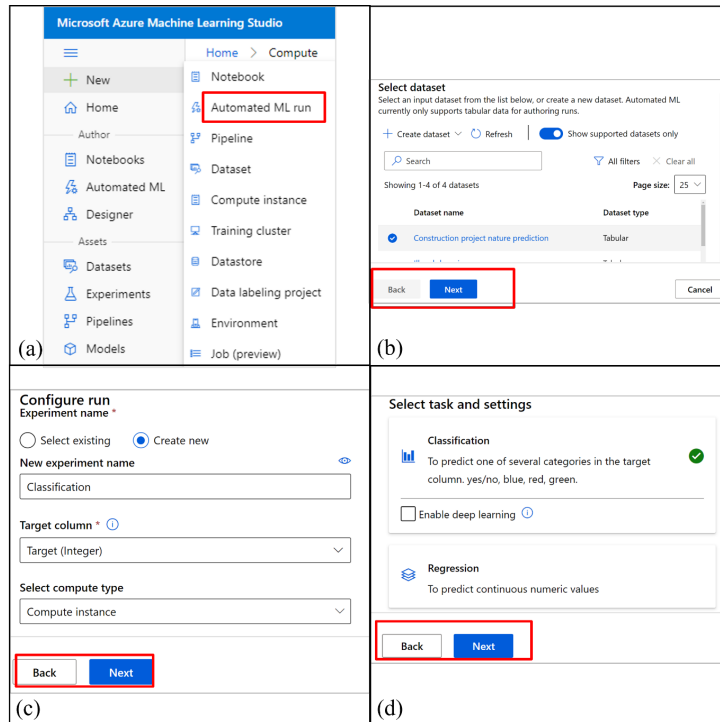


Figure 3. Demonstration of Step 2 of the AutoML guideline

245

In step 3, one can evaluate the classification or regression results trained by AutoML. When the running status on the dialog in Figure 4(a) changes to “Completed,” the AutoML job is completed in Azure. Figure 4(b) shows the trained ML models with metric scores under the “Models” tab. In addition, the web links in the model list explain the associated ML model and patterns. Advanced properties, metrics, and performance charts are available in the “Metrics” tab, as shown in Figure 4(c). Although there are no general thresholds of acceptance for classification and regression, a higher balanced accuracy metric such as “macro F1 score” or a lower error metric such as RMSE is always preferred. If the resulting metric is unsatisfactory, e.g., $F_1 < 0.65$ in classifying the water portability dataset, one can rewind Step 2 or Step 1 to revise the AutoML job settings or dataset.

250

255

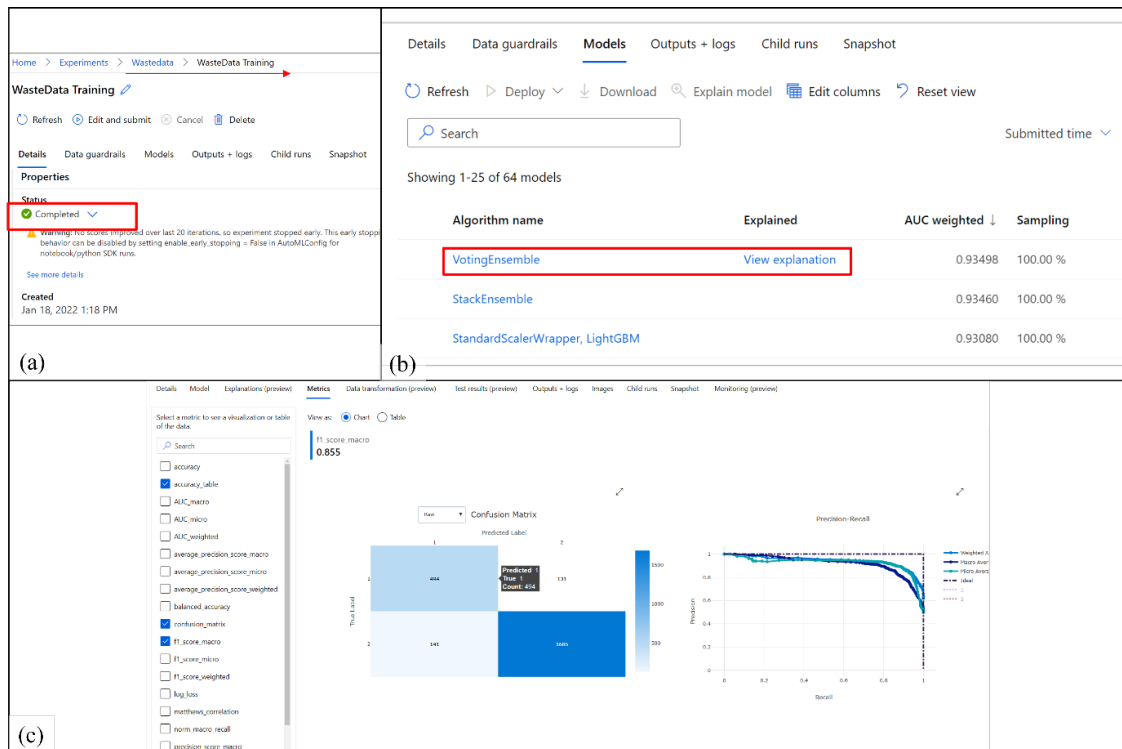


Figure 4. Demonstration of Step 3 of the AutoML guideline

260 Some AutoML tools also offer advanced metrics and charts for evaluating the input dataset and training results. For example, Figure 5(a) shows the top 4 important attributes in the dataset with their important values. One should revise the definitions or add more attributes when no important ones are discovered. Figure 5(b) shows a trained ML model's ensemble weights and hyperparameters in JSON format. Figure 5(c) depicts the data processing by AutoML in a directed acyclic graph, in which the data preprocessing, feature selection, scaling strategies, and ML models are optimized by AutoML. According to the data metrics and charts, a construction practitioner can review and revise the dataset, e.g., updating the definitions of attributes, correcting faults, handling data missingness, and supplementing extra instances.

265

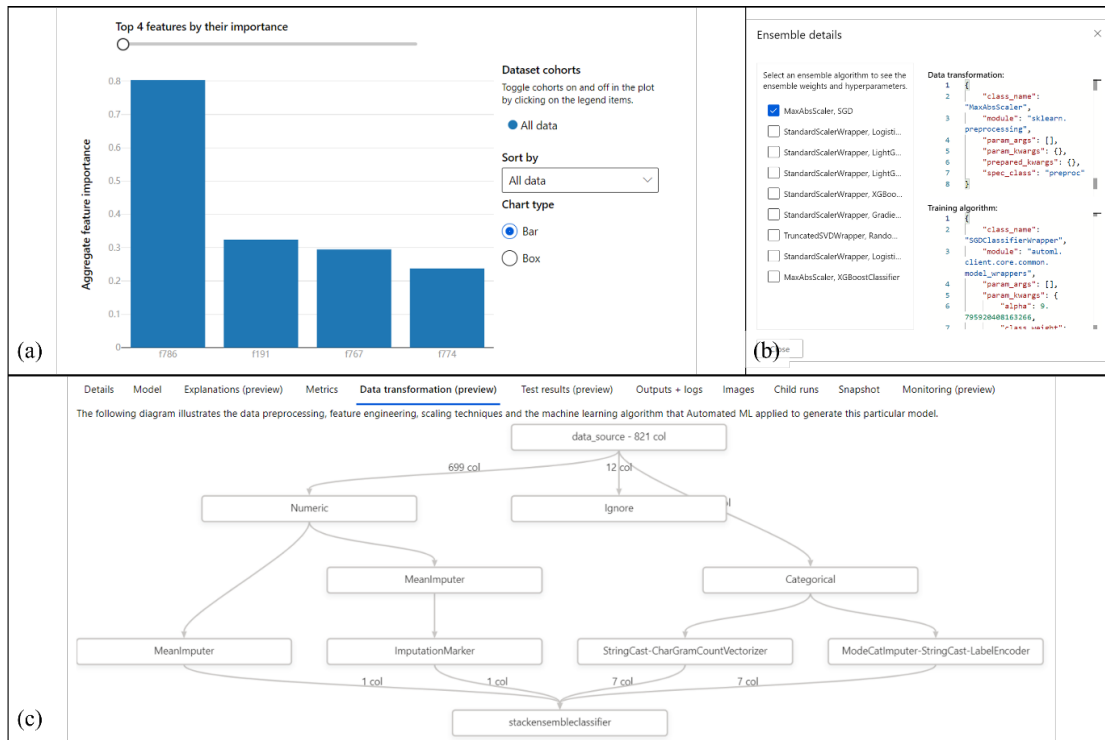


Figure 5. Detail parameters of training model

270

In Step 4, the ML model trained by AutoML and confirmed by the construction practitioner is applied to the target industrial scenario. For commercial AutoML tools such as Azure, the trained model is usually available as an online cloud service, as shown in Figures 10(a) and 10(b). After the successful deployment as a cloud service, the model trained by AutoML can be accessed through Power BI. Figure 6(c) shows the Power BI dialog for importing a data file (e.g., in Excel format) from local disks. The classification or prediction results are available on the dialog, as shown in Figure 6(d), under the “Azure Machine Learning” option. Alternatively, the model trained by AutoML can also be deployed as a “real-time endpoint,” as shown in Figure 6(a), when access to the Internet is limited.

275

280

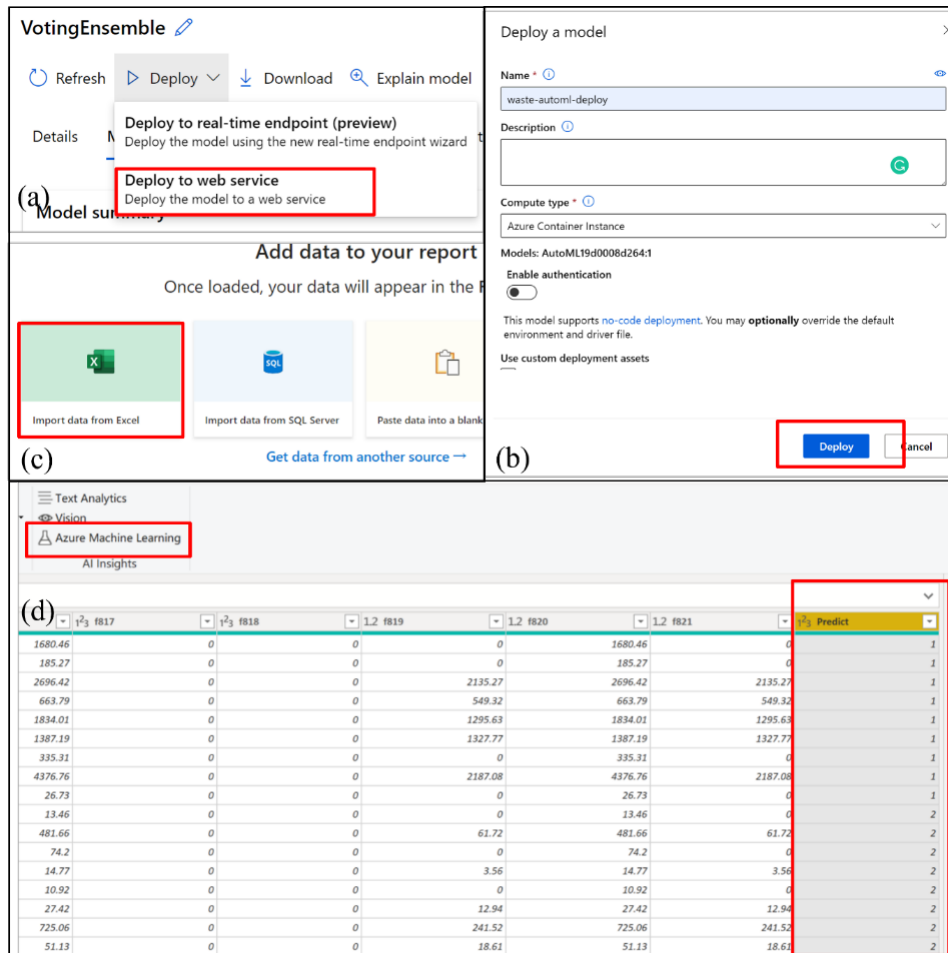


Figure 6. Demonstration of Step 4 of the AutoML guideline

6. Conclusion

Smart construction is expected to improve the construction industry's efficiency, safety, and sustainability by applying digital technology and advanced building practices. The findings in this paper successfully demonstrated the potential of AutoML is revolutionizing the construction industry. The results from six classification and regression tasks of various datasets have shown that AutoML can simplify the traditionally complex process of constructing predictive models, making it accessible to professionals without extensive data science training. Based on the findings, we encourage construction practitioners to embrace the novel AutoML techniques and continue exploring their potential to transform construction practices. In selecting an AutoML tool, we first need to consider user-friendliness and ease of use. The cost of use is also an essential aspect, and as technology develops, the accuracy and time spent on models will improve.

However, it is important to acknowledge the limitations of this paper. While we have shown the potential of AutoML in a specific case study, further research is needed to explore its applicability to a wider range of construction scenarios and datasets. Additionally, the challenges unique to construction datasets, such as their complexity and variability, require further investigation to optimize the use of AutoML in this industry fully. Future research directions are suggested to explore the combination of machine learning and the latest technologies, such as blockchain, virtual reality, and digital twins.

Acknowledgment

The work presented in this paper was supported by Hong Kong Research Grants Council (Nos. T22-504/21-R and C7080-22GF) and in part by Shenzhen Science, Technology and Innovation Commission (No. SGDX20201103093600002).

References

- [1] Karmaker, S.K., et al., *Automl to date and beyond: Challenges and opportunities*. ACM Computing Surveys (CSUR), 2021. **54**(8): p. 1-36.
- [2] Zhao, R., Z. Chen, and F. Xue, *A blockchain 3.0 paradigm for digital twins in construction project management*. Automation in Construction, 2023. **145**: p. 104645.
- [3] Xue, F., et al., *From LiDAR point cloud towards digital twin city: Clustering city objects based on Gestalt principles*. ISPRS Journal of Photogrammetry and Remote Sensing, 2020. **167**: p. 418-431.
- [4] Kong, L., et al., *When permissioned blockchain meets IoT oracles: An on-chain quality assurance system for off-shore modular construction manufacture*. 2022.
- [5] Štefanič, M. and V. Stankovski. *A review of technologies and applications for smart construction*. in *Proceedings of the Institution of Civil Engineers-Civil Engineering*. 2018. Thomas Telford Ltd.
- [6] He, X., K. Zhao, and X. Chu, *AutoML: A survey of the state-of-the-art*. Knowledge-Based Systems, 2021. **212**: p. 106622.
- [7] Alsharef, A., et al., *Review of ML and AutoML solutions to forecast time-series data*. Archives of Computational Methods in Engineering, 2022. **29**(7): p. 5297-5311.
- [8] Zhao, R., et al. *A Study on Protocols of Cross-Chain Data Synchronization for Permission Blockchain for Construction Management*. in *International Symposium on Advancement of Construction Management and Real Estate*. 2021. Springer.
- [9] Xu, Y., et al., *Machine learning in construction: From shallow to deep learning*. Developments in the built environment, 2021. **6**: p. 100045.
- [10] Wever, M., et al., *AutoML for multi-label classification: Overview and empirical evaluation*. IEEE transactions on pattern analysis and machine intelligence, 2021. **43**(9): p. 3037-3054.
- [11] Gondia, A., et al., *Machine learning algorithms for construction projects delay risk prediction*. Journal of Construction Engineering and Management, 2020. **146**(1): p. 04019085.
- [12] Huang, M., J. Ninić, and Q. Zhang, *BIM, machine learning and computer vision techniques in underground construction: Current status and future perspectives*. Tunnelling and Underground Space Technology, 2021. **108**: p. 103677.
- [13] Vaccaro, L., G. Sansonetti, and A. Micarelli, *An empirical review of automated machine learning*. Computers, 2021. **10**(1): p. 11.
- [14] Guyon, I., et al. *A brief review of the ChaLearn AutoML challenge: any-time any-dataset learning without human intervention*. in *Workshop on Automatic Machine Learning*. 2016. PMLR.
- [15] Elshawi, R., M. Maher, and S. Sakr, *Automated machine learning: State-of-the-art and open challenges*. arXiv preprint arXiv:1906.02287, 2019.
- [16] Chauhan, K., et al. *Automated machine learning: The new wave of machine learning*. in *2020 2nd International Conference on Innovative Mechanisms for Industry*

Applications (ICIMIA). 2020. IEEE.

[17]Toğan, V., et al., *Customized AutoML: An Automated Machine Learning System for Predicting Severity of Construction Accidents*. Buildings, 2022. **12**(11): p. 1933.

350 [18]Manduchi, E., J.D. Romano, and J.H. Moore, *The promise of automated machine learning for the genetic analysis of complex traits*. Human Genetics, 2022. **141**(9): p. 1529-1544.

[19]Babu, G.S. and S. Suresh, *Meta-cognitive RBF network and its projection based learning algorithm for classification problems*. Applied Soft Computing, 2013. **13**(1): p. 654-666.

355 [20]Jagielski, M., et al. *Manipulating machine learning: Poisoning attacks and countermeasures for regression learning*. in *2018 IEEE symposium on security and privacy (SP)*. 2018. IEEE.

[21]Yang, Z., F. Xue, and W. Lu, *Handling missing data for construction waste management: Machine learning based on aggregated waste generation behaviors*. Resources, Conservation and Recycling, 2021. **175**: p. 105809.

360 [22]Lu, W., *Big data analytics to identify illegal construction waste dumping: A Hong Kong study*. Resources, conservation and recycling, 2019. **141**: p. 264-272.

[23]Matzka, S. *Explainable artificial intelligence for predictive maintenance applications*. in *2020 third international conference on artificial intelligence for industries (ai4i)*. 2020. IEEE.

365 [24]Yeh, I.-C., *Modeling of strength of high-performance concrete using artificial neural networks*. Cement and Concrete research, 1998. **28**(12): p. 1797-1808.

[25]Yeh, I.-C. and T.-K. Hsu, *Building real estate valuation models with comparative approach through case-based reasoning*. Applied Soft Computing, 2018. **65**: p. 260-271.

370