



Glomerular Endothelial Cells Are the Coordinator in the Development of Diabetic Nephropathy

Tingting Li^{1,2}, Kaiyuan Shen³, Jiawei Li^{1,4}, Susan W. S. Leung⁵, Tongyu Zhu^{1,4} and Yi Shi^{1,2*}

¹ Key Laboratory of Organ Transplantation, Zhongshan Hospital, Fudan University, Shanghai, China, ² Institute of Clinical Science, Zhongshan Hospital, Fudan University, Shanghai, China, ³ Department of Neurology, Zhongshan Hospital, Fudan University, Shanghai, China, ⁴ Department of Urology, Zhongshan Hospital, Fudan University, Shanghai, China, ⁵ Department of Pharmacology and Pharmacy, Li Ka Shing Faculty of Medicine, The University of Hong Kong, Hong Kong, China

OPEN ACCESS

Edited by:

Quan Hong,
Chinese PLA General Hospital, China

Reviewed by:

Avi Rosenberg,
Johns Hopkins Medicine,
United States

Lu Zhang,
First Affiliated Hospital of Xiamen
University, China

*Correspondence:

Yi Shi
shi.yi@zs-hospital.sh.cn
orcid.org/0000-0003-3005-9655

Specialty section:

This article was submitted to
Nephrology,
a section of the journal
Frontiers in Medicine

Received: 19 January 2021

Accepted: 21 May 2021

Published: 18 June 2021

Citation:

Li T, Shen K, Li J, Leung SWS, Zhu T
and Shi Y (2021) Glomerular
Endothelial Cells Are the Coordinator
in the Development of Diabetic
Nephropathy. *Front. Med.* 8:655639.
doi: 10.3389/fmed.2021.655639

The prevalence of diabetes is consistently rising worldwide. Diabetic nephropathy is a leading cause of chronic renal failure. The present study aimed to explore the crosstalk among the different cell types inside diabetic glomeruli, including glomerular endothelial cells, mesangial cells, podocytes, and immune cells, by analyzing an online single-cell RNA profile (GSE131882) of patients with diabetic nephropathy. Differentially expressed genes in the glomeruli were processed by gene enrichment and protein-protein interactions analysis. Glomerular endothelial cells, as well as podocytes, play a critical role in diabetic nephropathy. A subgroup of glomerular endothelial cells possesses characteristic angiogenesis genes, indicating that angiogenesis takes place in the progress of diabetic nephropathy. Immune cells such as macrophages, T lymphocytes, B lymphocytes, and plasma cells also contribute to the disease progression. By using iTALK, the present study reports complicated cellular crosstalk inside glomeruli. Dysfunction of glomerular endothelial cells and immature angiogenesis result from the activation of both paracrine and autocrine signals. The present study reinforces the importance of glomerular endothelial cells in the development of diabetic nephropathy. The exploration of the signaling pathways involved in aberrant angiogenesis reported in the present study shed light on potential therapeutic target(s) for diabetic nephropathy.

Keywords: angiogenesis, glomerular endothelial dysfunction, single cell RNA analysis, diabetic nephropathy, cell crosstalk

INTRODUCTION

The prevalence of diabetes keeps rising worldwide (1). Diabetes and diabetes-induced complications remarkably affect life quality and reduce life span compared with the non-diabetes population, although many advances have been made in the early diagnosis and clinical treatments (1, 2). Diabetes-induced complications include retinopathy, nephropathy, and neuropathy. Among them, diabetic nephropathy is a leading cause of chronic renal failure. Patients with diabetic nephropathy present albuminuria (<300 mg per day) at an early stage and later develop proteinuria, leading to renal failure (3, 4). Pathological changes in diabetic nephropathy include glomerular capillary widening, glomerular basement membrane thickening, mesangial matrix expansion, arteriolar hyalinosis, and glomerulosclerosis.

Glomeruli are a tight cluster of capillaries consisted of endothelial cells, podocytes, and mesangial cells. Inside the glomerulus, endothelial cells, podocytes, and glomerular basement membrane are fundamental structures for glomerular filtration. Mesangial cells are supporting cells functioning as pericytes and vascular smooth muscle cells. In diabetic patients, podocyte foot process changes are consistently observed. Since preservation of these changes reduces urinary protein excretion and improves kidney function (5), podocyte injury is considered to be a vital feature of diabetic nephropathy. On the other hand, the role of glomerular endothelial cells has been intensively studied in the last decade (6, 7). Diabetes-induced glomerular endothelial dysfunction presents the destruction of fenestrated endothelial integrity, increased cell proliferation, and immature angiogenesis, as well as an increased endothelial-to-mesenchymal transition (8). Of note, immune cells, including macrophages, T lymphocytes, B lymphocytes, plasma cells, and dendritic cells, are all involved in the development of diabetic nephropathy (9–16). Thus, it is critical to consider the importance of cellular crosstalk inside glomeruli in the progress of diabetic nephropathy since glomeruli are a fine-tuning functional unit.

Single-cell sequencing, the updated version of the next-generation sequencing technologies, provides a high resolution of cell differences in microenvironments. The use of single-cell sequencing have led to the identification of novel cells and a better understanding of specific cells in comprehensive microenvironments in developmental biology (17, 18), neurology (19), oncology (20), immunology (21, 22), cardiovascular research (23, 24), infectious disease (23, 25) as well as microbiomes (26). The online single-cell sequencing data (GSE131882) have identified fifteen types of cells, including parenchymal cells and immune cells, in the renal cortex of diabetes patients (27). The present study focused on crosstalk inside human diabetic glomeruli by subsetting the genomic data of glomerular endothelial cells, podocytes, mesangial cells, and immune cells. It was designed to investigate the role of glomerular endothelial cells under diabetic conditions, with special attention being paid to the interactions of endothelial cells with other cells inside glomeruli in the progress of diabetic nephropathy.

METHODS

Data Sources

The dataset (GSE131882) (28) were downloaded from the Gene Expression Omnibus (<https://www.ncbi.nlm.nih.gov/geo/>). As reported, the GSE131882 recruited three healthy and three patients with early diabetic nephropathy, among which two of the three patients presented proteinuria and glomerulosclerosis (28). The raw data were processed with zUMI (29). After gene name conversion, the Seurat package (version 3.1.2) with $\text{min.cells} = 3$ and $\text{min.features} = 200$ was used (30, 31). Quality control was performed in counts nuclei gene between 500 and 3,000, and mitochondrial gene percentage $< 20\%$. Uniform manifold approximation and projection (UMAP) presented 17 clusters of cells with $\text{dims} = 1:30$ and $\text{reduction} = \text{"pca."}$ Run Principal Component Analysis (RunPCA) was set with $\text{npcs} = 50$. *t*-Distributed stochastic neighbor embedding (TSNE)

was generated by RUNTSNE being set with $\text{dims} = 1:30$ and $\text{reduction} = \text{"pca."}$ Nearest-neighbor search was run with FindNeighbors set with $\text{dims} = 1:30$. Clusters of cells were identified with the FindClusters being run with $\text{resolution} = 0.1$. Differential expressed genes (DEGs) among individual clusters were detected with FindAllMarkers function with the following settings: $\text{log-fold change.threshold} = 0.25$, $\text{min.pct} = 0.1$ and $\text{test.use} = \text{"wilcox."}$ Highly expressed genes were identified by adjusted p -value < 0.05 with $\text{FDR} < 0.05$. Cluster assignment was performed based on expressions of canonical marker genes. Cell identification was performed based on previous reports (32–34) and the CellMarker database (35). A total of 19,700 cells were identified in the renal cortex, including proximal convoluted tubule cells, cells in the loop of Henle, distal convoluted tubule cells, intercalated cells, principal cells, endothelial cells, podocytes, mesangial cells, and leukocytes (Figure 1A).

Genomic data of endothelial cells, podocytes, mesangial cells, and immune cells were extracted by the Subset function in Seurat since the present study focused on cellular crosstalk inside glomeruli. RunPCA function set with $\text{npcs} = 50$ was used to identify significant principal components (PCs). Significant PCs was then inputted for running the RUNTSNE and RUNUMAP. For endothelial cells, FindNeighbors was run with $\text{dims} = 1:10$ and FindClusters was run with $\text{resolution} = 0.1$. For glomerular endothelial cells (36, 37), FindNeighbors was run with $\text{dims} = 1:10$ and FindClusters was run with $\text{resolution} = 0.3$. For mesangial cells, FindNeighbors was run with $\text{dims} = 1:10$ and FindClusters was run with $\text{resolution} = 0.05$. For leukocytes, FindNeighbors was run with $\text{dims} = 1:20$ and FindClusters was run with $\text{resolution} = 0.35$. Highly expressed genes were identified by adjust p -value < 0.05 with $\text{FDR} < 0.05$. Cluster assignment was performed based on expression of canonical marker genes (Figure 1B).

By using the FindMarkers function with $\text{log-fold change.threshold} = 0.25$, $\text{min.pct} = 0.1$ and $\text{test.use} = \text{"t,"}$ DEGs were defined when absolute foldchange was higher than 1.5 or lower than 0.67 with a p -value < 0.05 .

ClueGO (38), a plug-in in Cytoscape 3.8.3, was used for DEGs enrichment. Function clusters were calculated using kappa-score on their biological roles and presented in pie charts. The top sixty DEGs, including upregulated and downregulated ones, were visualized by heatmaps and processed using the *ComplexHeatmap* R package (version 2.2.0) (39).

To study cell-to-cell communications inside glomeruli, a ligand-receptor interaction analysis was performed using iTALK (40). DEGs described above were inputted to the FindLR function and presented by the LRPlot function.

RESULTS

Using the pan-endothelial markers EMCN and ENG, 1,070 cells were identified as endothelial cells (41). Among them, 294 endothelial cells had high expressions of EHD3 and HECW2 and they were defined as glomerular endothelial cells (36, 37). In addition, a total of 498 podocytes, 465 mesangial cells, and 336 immune cells were detected (Table 1 and Figures 1A,B).

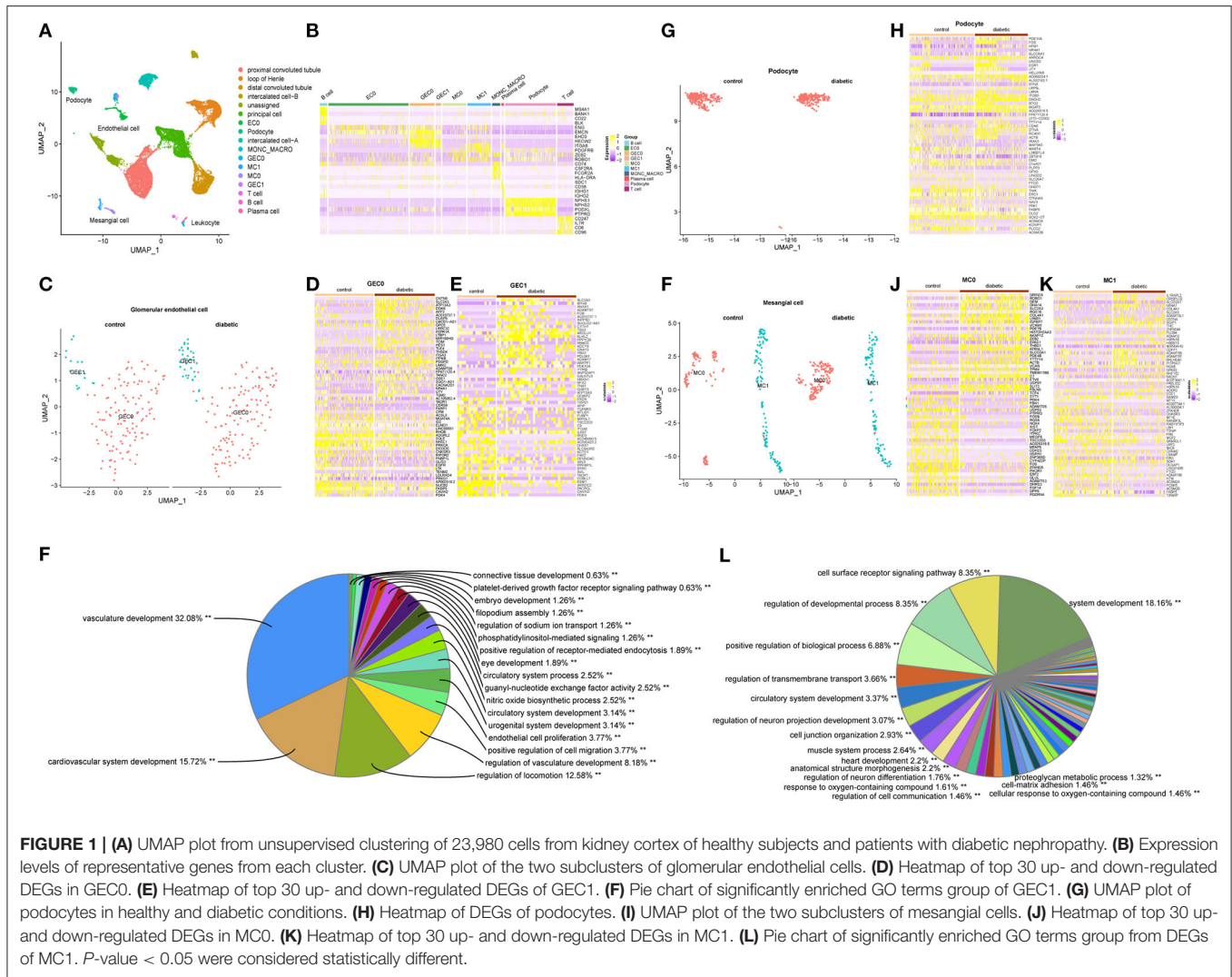


TABLE 1 | Cell counts in glomeruli from healthy subjects and patients with diabetic nephropathy.

		Healthy	Diabetic	Total
Endothelial cells	GEC0	120	122	242
	GEC1	17	35	52
Podocytes	Pod	274	224	498
Mesangial cells	MC0	101	134	235
	MC1	121	109	230
Immune cells	Monocyte	19	60	79
	T cell	16	145	161
	B cell	1	71	72
	Plasma cell	0	24	24

Among the 294 glomerular endothelial cells, 137 cells were from healthy subjects, and 157 cells were from diabetic patients. Glomerular endothelial cells were further classified into GEC0 and GEC1 subsets according to the function analysis: the former

having the DEGs for the negative regulation of cell activation, cell adhesion and lymphocyte activation, and positive regulation of smooth muscle proliferation (Supplementary Figure 1A); and in the latter subset, the DEGs were in the modules of vasculature development, cell migration, and endothelial cell proliferation modules in the functional analysis (Figures 1C–F and Supplementary Figure 1B). In the GEC0 cluster, 120 cells were from control subjects, and 122 cells were from diabetic patients (122 cells). In GEC1 clusters, 17 endothelial cells were from the control subjects, and 35 were from diabetic patients.

All podocytes were in one group, 274 from control and 224 from diabetes. Fifty-two DEGs were identified by comparing podocytes from the control and diabetic groups. Functional analysis revealed that the DEGs were enriched in modules of structure constituent of postsynapse, striated muscle cell apoptotic process, and skeletal muscle cell differentiation (Figures 1G,H and Supplementary Figure 1C).

Mesangial cells were grouped into MC0 and MC1 subsets. Mesangial cells in MC0 (101 in control and 134 in

diabetes) were enriched for regulating anatomical structure morphogenesis, cell migration, and extracellular matrix organization (**Supplementary Figure 1D**), whereas MC1 cells (121 in control and 109 in diabetes) were enriched for the regulation of collagen biosynthetic process and vascular development (**Figures 1I–L** and **Supplementary Figure 1E**).

In the cluster of immune cells, 36 cells were from control subjects, and 300 cells were from diabetic patients. Subcluster analysis further grouped the immune cells into monocytes (macrophages) which showed high expression of CD74, CSF2RA, FCGR2A, and HLA-DRA; T lymphocytes, being highly expressed with CD247, IL7R, CD6, and CD96; B lymphocytes, with high expression of MS4A1, BANK1, CD22, and BLK; as well as plasma cells which were highly expressed with SDC1, CD38, IGHG1, and IGHG2. In the monocyte (macrophage) cluster, M1-like genes, including ITGAX and CD86, and M2-like genes, including CD163 and MRC1, were presented in both control and diabetic groups (**Figures 2A–E**).

There were 17 T lymphocytes from the control and 145 cells from the diabetic groups. DEGs in T lymphocytes were involved in gene expression, mRNA metabolic process, and T cell receptor signaling pathway.

Seventy-one B lymphocytes (only one of them were from the control group) and 24 plasma cells (all from diabetic patients) were observed in diabetic patients with proteinuria. Top genes in B lymphocytes encoded for proteins for regulating B cell differentiation and proliferation, and B receptor signaling pathway. Top genes in plasma cells were enriched in the modules of immunoglobulin biosynthetic process and B cell receptor signaling pathway (**Supplementary Figures 1F–I**).

Cell-to-Cell Communication

To study ligand-receptor interactions, DEGs of GEC1, MC1, monocytes (macrophages), T lymphocytes, as well as the top 500 genes from podocytes, B lymphocytes, and plasma cells were used. A total of 43 interactions, in autocrine and/or paracrine mechanism, were identified. In glomerular endothelial cells, TGF β 2 were upregulated in diabetic group; it acted on TGF β 3 in podocytes and endothelial cells, TGF β 2 in B lymphocytes and LRP2 in mesangial cells. The growth factor PDGFB was also differentially upregulated in glomerular endothelial cells; it acted on ITGAV in podocytes and sphingosine 1-phosphate receptor 1 (S1PR1, also known as EDG1) in endothelial cells. The upregulated molecule ADAM17 in glomerular endothelial cells affected ERBB4 in podocytes, and the upregulated PSEN1 acted at CD44 of B lymphocytes and T lymphocytes and NOTCH2 of podocytes. Increased expression of ITGB8 were also observed in glomerular endothelial cells, and this protein responded to COL4A1 from mesangial cells. The receptor for TGF β 2 from endothelial cells, LRP2, were downregulated in both endothelial and mesangial cells of the diabetic patients. ADAM28 was downregulated in plasma cells and B cells (**Figure 2F**).

DISCUSSION

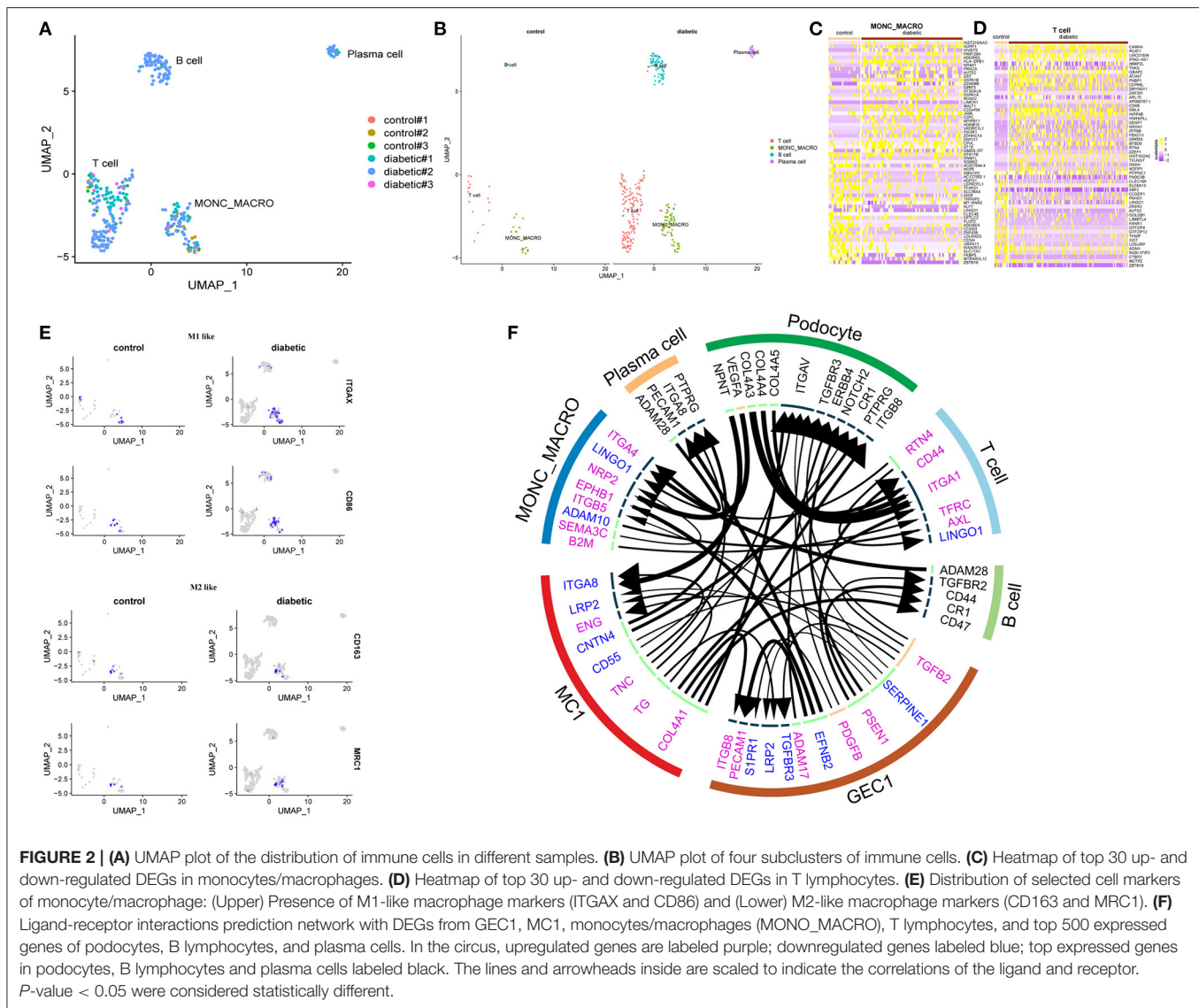
By performing bioinformatics analysis on the online single-nucleus RNA sequencing dataset regarding glomerular cells

in diabetic patients (28), the present study reports that (1) glomerular endothelial cells also play a critical role in the development of diabetic nephropathy; (2) apart from well-studied diabetes/high glucose-induced endothelial dysfunction, a group of glomerular endothelial cells possesses characteristic angiogenesis genes; and (3) immune cells such as macrophages, T lymphocytes, B lymphocytes, and plasma cells take part in the progress of diabetic nephropathy.

Podocytes and podocyte-released glomerular basement membrane are critical for preventing macro-molecular proteins from filtering out from the plasma to the kidney tubules. Moreover, podocytes are an important cell source of growth factors, which regulate endothelial cell proliferation and angiogenesis. In the present study, VEGFA, EGR1, and NOTCH2 genes are among the top 500 highly-expressed genes, supporting the critical role of podocytes in maintaining glomerular endothelial hemostasis. It is reported that podocyte counts increase in the early stage and decrease in the advanced stage of diabetes (42, 43). The present study identified comparable podocyte counts between the control and diabetic groups, with the latter showing fifty-two DEGs, in which none of them were enriched in modules of angiogenesis, vascular development, or glomerular development. The findings thus suggest that the molecular and functional changes in podocytes unlikely contribute to the progress, at least, not during the initiation phase of diabetic nephropathy.

ADAM metalloproteinase domain 17 (ADAM17) is a disintegrin and metalloprotease. By shedding tumor nuclear factor, platelet receptors glycoprotein 1, adhesion molecules, and angiotensin-converting enzyme converting enzyme 2 (ACE2), ADAM17 plays a critical role in the proinflammatory responses, thrombus formation, and renin-angiotensin system activation (44–47). ADAM17 and its shedding effects on ACE2 lead to glomerular area enlargement, glomerular and tubular basement membrane thickening, mesangial matrix expansion, and collagen deposition (48). Increased expressions of ADAM17 in kidneys are reported in diabetic patients (49) and experimental diabetic rodents (50–52). In the present study, ADAM17 in glomerular endothelial cells was upregulated, and it targeted at V-ErbB2 avian erythroblastic leukemia viral oncogene homolog 4 (ERBB4), a member of the epidermal growth factor receptor family (EGFR), in the podocytes. Increased ERBB4 expressions phosphorylate EGFR, activates TGF-Smad-2/3 signaling, resulting in podocyte apoptosis in type 2 diabetic patients and diabetic mice (both type 1 and type 2) (53). Blockade of ERBB4 reduces glomerular damage and protects animals from the development of albuminuria (54, 55).

The role of glomerular endothelial dysfunction in the initiation and development of diabetic nephropathy has drawn attention recently. Besides well-studied endothelial dysfunction in macrocirculation in diabetes (56–59), characterized by reduced nitric oxide bioavailability, increased oxidative stress, and enhanced inflammatory responses, endothelial cells in the microcirculation also present upregulation of adhesion molecules, breakdown of endothelial barrier, and aberrant angiogenesis. Angiogenesis is a characteristic feature in diabetic microcirculation (57). The present analysis demonstrates that



diabetic patients have a higher proportion of glomerular endothelial cells in the GEC1 group, the glomerular endothelial cells with high expression of angiogenic genes, than control subjects (17/137 for healthy subjects, and 35/157 for diabetic patients), thus supporting that diabetes induces glomerular endothelial cell proliferation, and these proliferative endothelial cells are fundamental for immature angiogenesis, vessel leakage as well as glomerulosclerosis.

VEGF, an endothelial-specific growth factor, promotes endothelial cell proliferation and differentiation, resulting in increased endothelial permeability. Under physiological conditions, a low basal VEGF level is required for endothelial cell homeostasis (60). VEGF, mainly VEGFA, is produced by podocytes, and VEGFRs are present on glomerular endothelial cells. In the present study, VEGFA was highly expressed in podocytes while an upregulation of its canonical receptors in glomerular endothelial cells was not detected in diabetic patients;

the finding thus suggests that other angiogenic signaling pathways are involved in diabetes-induced aberrant angiogenesis.

Endothelial released-PDGFB, another angiogenic factor, targeted S1PR1 in endothelial cells, which was downregulated in the present study. The S1PR1, a G-protein-coupled receptor family member, responds to sphingosine-1-phosphate (S1P) (61), VEGF (62), and PDGFB (63). S1PR1 is mainly expressed in microvascular endothelial cells and plays a critical role in promoting barrier integrity (64, 65), sproutings (62), angiogenesis maturation (66–68), and nitric oxide generation (69). Endothelium-specific S1PR1-knockout mice exhibit impaired blood-brain-barrier integrity and increased adhesion molecule expressions in a middle cerebral artery occlusion-induced stroke model (70–72). Cardiomyocyte-restricted deletion of S1PR1 shows progressive cardiomyopathy and premature death due to impaired activity of sarcolemmal Na^+/H^+ exchange and increased Ca^{2+} sensitivity

(73). S1PR1 signaling pathway controls the renal vasculature development in mouse early embryogenesis (74), and protects glycocalyx by shedding syndecan-1 (75). The uncoupled expressions of PDGFB and S1PR1, with the former being upregulated and the latter downregulated, in the present study and literatures (63) indicates that the overspilled PDGFB probably signals through other receptors, resulting in endothelial barrier leakage and immature angiogenesis.

Ephrin B2 (EFNB2) was decreased in endothelial cells, while its receptor EPHB1 was increased in monocytes/macrophages. Ephrin/Eph receptor interactions are bidirectional and play essential roles in vascular development. Mice with endothelial EFNB2-deletion display a severely compromised vascular system and die at mid-gestation. Inhibiting Ephrin B ligands prevents endothelial cell sprouting and induces endothelial cell assembly in disorder (76–79). Besides, Ephrin/Eph receptor interaction facilitates macrophage recognition of differentiating human erythroblasts (80).

Serpin family E member 1 (SERPINE1, also known as endothelial plasminogen activator inhibitor PAI-1) is the primary physiological inhibitor of tissue plasminogen activator and urokinase-type plasminogen (uPA) activator, and participates in preventing fibrinolysis and promoting angiogenesis as well as inhibiting matrix metalloproteinases (81, 82). SERPINE1 stimulates angiogenesis through its vitronectin-binding function. SERPINE1 promotes angiogenesis at physiological concentrations but inhibits vascularization at pharmacological concentrations (83). By combining with uPA receptor and LDL-receptor-associated protein (LRP), SERPINE1 affects monocyte/macrophage motility (84–86). In the present study, both glomerular endothelial cells and mesangial cells have reduced expressions of LRP2, an endocytic receptor for protein reabsorption from the glomerular filtrate. So far, the presence of LRP is mainly reported in tubular cells and podocytes, with few reports in mesangial cells and glomerular endothelial cells.

Presenilin-1 (PSEN1) is a component of synaptic and endothelial adherens junctions (87). Genetic mutation on presenilin-1 presents early-onset Alzheimer symptoms in mice, accompanied by decreases in capillary sprouting sites and increases in capillary diameter (88). It indicates that PSEN1 is involved in angiogenesis.

In the high-angiogenic GEC1 group, increased expressions of PDGFB, TGF β 2, ADAM17, and ITGB8, and reduced expression of S1PR1 are linked to glomerular angiogenesis and glomerulosclerosis, whereas the increased expression of presenilin-1 and the decreased expressions of SERPINE1 and EFNB2 in glomerular endothelial cells correlate to the downregulation of angiogenesis. The activity of glomerular endothelial cells, including immature angiogenesis, is regulated by podocytes, mesangial cells, glomerular endothelial cells, and immune cells in a paracrine and/or an autocrine way. The co-existence of pro-angiogenic and anti-angiogenic factors in glomeruli of diabetic patients indicates that diabetes-induced angiogenesis is counterbalanced by the compensatory mechanisms from the neighboring cells. It is further confirmed with their pathological changes that two of three diabetic patients presented with proteinuria and an

increased proportion of global glomerulosclerosis (28). It is important to note that the progressive changes in diabetic nephropathy are hard to restore when compensatory works fade. Therefore, protecting endothelial cell function and preventing angiogenesis may have therapeutic potential since the two compensatory molecules have additional physiological roles.

In addition to aberrant angiogenesis, interstitial fibrosis is another characteristic feature of diabetic nephropathy. Integrins are a family of ubiquitous $\alpha\beta$ heterodimeric receptors. Integrins form receptors for different ligands due to combinations of alpha and beta subunits; thus, one integrin binds several ligands while one ligand is recognized by several integrins (89–91). Integrins regulate a variety of biological processes, including cell growth, proliferation, migration, signaling, and cytokine activation, thereby playing important roles in inflammation, infection, and angiogenesis (92). In glomeruli, integrin α 8 (ITGA8) is exclusively present in mesangial cells (93, 94). Increased ITGA8 expression has the potential to be a clinical marker of glomerular disease prognosis since ITGA8 supports adhesion of mesangial cells (95), reduces cell proliferation (96), protects against apoptosis (97), and facilitates phagocytosis (95, 98). Of importance, increased expressions of ITGB8 play a role in glomerular endothelial viability by controlling the release of bioactive TGF- β (99, 100), a potent inducer of endothelial-mesenchymal transition, especially TGF- β 2 isoform (101). In the present study, ITGB8/ITGA8 was on the top list of the genes expressed in podocytes and plasma cells. While ITGB8 expression is increased in glomerular endothelial cells, ITGA8 expression is decreased in mesangial cells. Moreover, COL4A1 in mesangial cells, the expression of which was increased in diabetes, acted on ITGB8 in glomerular endothelial cells. The upregulated TGF- β 2 in endothelial cells further activates its corresponding receptors, namely TGFBR2, TGFBR3 and ENG, on B lymphocytes, podocytes, glomerular endothelial cells, and mesangial cells, respectively, leading to epithelial-mesenchymal transition and fibrosis in the development of diabetic nephropathy.

In addition, ITGA1 expression was increased in T lymphocytes, and ITGA4 expression was on the top gene list of monocytes/macrophages. Blocking ITGA4 inhibits neutrophil migration into the glomerulus and reduces proteinuria in mice with glomerular basement membrane nephritis (102). Combined treatment of anti-ITGB2 and anti-ITGA4 antibodies reduces monocyte/macrophage infiltration into the glomeruli, while neither alone has significant effects (103).

Both integrin and CD44 respond to osteopontin, collagens, and matrix metalloproteinases (104). In the present study, CD44 expressions were upregulated in both T and B lymphocytes, suggesting that glomerular parenchymal cells, together with lymphocytes, participate in glomerulosclerosis.

Semaphorins are a large family of secreted and membrane-bound proteins. The class 3 secreted semaphorin, SEMA3, is present in human peripheral blood monocytes. In response to signals of cadherins (105, 106), and VEGFRs (107, 108), SEMA3 forms complexes with neuropilin (NRP) and integrins (109, 110) to regulate organ development, tissue repair, immune responses, and tumorigenesis processes (109, 111–113). Both

NRP1 and NRP2 expressions are reduced in M1 differentiation, while NRP1 and SEMA3A expression are increased in M2 phenotype (114). Concomitant upregulation of SEMA3A and NRP2 demonstrated in the present analysis indicates that diabetes induces M2-like macrophages through an autocrine mechanism (115).

ADAM28 expression is downregulated in both B lymphocytes and plasma cells. ADAM28 expression is positively related to B cell proliferation (116). Upregulated CD19 controls B cell differentiation by regulating ADAM28-mediated NOTCH2 cleavage (117). It indicates that these antibody-producing lymphocytes are inactivated or dysfunctional in diabetes, although presences of B lymphocytes and plasma cells were exclusively observed in diabetes.

By analyzing the online dataset GSE131882 (28), the present study focuses on exploring the interactions of parenchymal cells of glomeruli as well as the potential involvements of immune cells in the progress of diabetic nephropathy, and special attention is paid to the angiogenesis process. Both pro- and anti-angiogenic genes are observed in the GEC1 and its neighboring cells, indicating a dynamic interplay between parenchymal cells and immune cells in the glomerulus during the early stage of the disease. A limitation of this study is a lack of confirmation in a cohort of diabetic kidneys. Given the reluctance of diabetic patients for biopsy, pertinent experimental animal models are an alternative. However, species differences are a critical issue, because species-specific genes and cell-type identification can affect the analysis. In human diabetes, endothelial cells with high expression of EHD3 and HECW2 are defined as glomerular endothelial cells; by contrast, in mouse diabetes, endothelial cells are identified with high expression of *Emcn*, *Kdr*, *Flt1*, and *Pecam1* (36). Thus, cautions are warranted for the interpretation, as well as conclusion, of dataset from experimental animals, and a direct extrapolation of those dataset to human condition may not be feasible.

In brief, the present study reports comprehensive interactions in diabetic glomeruli. A subgroup of glomerular endothelial cells with pro-angiogenesis characteristics is identified, thereby providing an evidence for the critical contribution of immature angiogenesis to the vessel leakage, glomerular barrier dysfunction, and glomerulosclerosis in the progress of diabetic nephropathy. Furthermore, glomerular endothelial

cells are not an independent player in the progress of diabetic nephropathy. Inside glomeruli, podocytes, mesangial cells, monocytes/macrophages, lymphocytes are all orchestrating in the scenario. The identification of glomerular endothelial cells with angiogenetic characters and the signaling pathways involved in the present study shed light on the therapeutic target for diabetic nephropathy.

DATA AVAILABILITY STATEMENT

The datasets presented in this study can be found in online repositories. The names of the repository/repositories and accession number(s) can be found in the article/**Supplementary Material**.

AUTHOR CONTRIBUTIONS

TL, KS, and JL analyzed the data. TZ, SL, and YS wrote the manuscript, read, edited/revised the manuscripts, and gave final content approval. All authors contributed to the article and approved the submitted version.

FUNDING

The present study was supported by Double First-Class Initiative of Fudan University (IDF152057 for YS).

SUPPLEMENTARY MATERIAL

The Supplementary Material for this article can be found online at: <https://www.frontiersin.org/articles/10.3389/fmed.2021.655639/full#supplementary-material>

Supplementary Figure 1 | (A) Pie chart of functional biological modules (left) and GO terms (right) of DEGs in GEC0. **(B)** Pie chart of functional biological modules (left) and GO terms (right) of DEGs in GEC1. **(C)** Pie chart of functional biological modules (left) and GO terms (right) of DEGs in podocytes. **(D)** Pie chart of functional biological modules (left) and GO terms (right) of DEGs in MC0. **(E)** Pie chart of functional biological modules (left) and GO terms (right) of DEGs in MC1. **(F)** Pie chart of functional biological modules (left) and GO terms (right) of DEGs in monocytes/macrophages. **(G)** Pie chart of functional biological modules (left) and GO terms (right) of DEGs in T lymphocytes. **(H)** Pie chart of functional biological modules (left) and GO terms (right) of top 200 genes in B lymphocytes. **(I)** Pie chart of functional biological modules (left) and GO terms (right) of top 200 genes in plasma cells.

REFERENCES

- Wild S, Roglic G, Green A, Sicree R, King H. Global prevalence of diabetes: estimates for the year 2000 and projections for 2030. *Diabetes Care*. (2004) 27:1047–53. doi: 10.2337/diacare.27.5.1047
- Bragg F, Holmes MV, Iona A, Guo Y, Du H, Chen Y, et al. Association between diabetes and cause-specific mortality in rural and urban areas of China. *JAMA*. (2017) 317:280–9. doi: 10.1001/jama.2016.19720
- Anders HJ, Huber TB, Isermann B, Schiffer M. CKD in diabetes: diabetic kidney disease versus nondiabetic kidney disease. *Nat Rev Nephrol*. (2018) 14:361–77. doi: 10.1038/s41581-018-0001-y
- Thomas MC, Brownlee M, Susztak K, Sharma K, Jandeleit-Dahm KA, Zoungas S, et al. Diabetic kidney disease. *Nat Rev Dis Primers*. (2015) 1:15018. doi: 10.1038/nrdp.2015.18
- Trasino SE, Tang XH, Shevchuk MM, Choi ME, Gudas LJ. Amelioration of diabetic nephropathy using a retinoic acid receptor beta2 agonist. *J Pharmacol Exp Ther*. (2018) 367:82–94. doi: 10.1124/jpet.118.249375
- Nakagawa T, Tanabe K, Croker BP, Johnson RJ, Grant MB, Kosugi T, et al. Endothelial dysfunction as a potential contributor in diabetic nephropathy. *Nat Rev Nephrol*. (2011) 7:36–44. doi: 10.1038/nrneph.2010.152
- Maestroni S, Zerbini G. Glomerular endothelial cells versus podocytes as the cellular target in diabetic nephropathy. *Acta Diabetol*. (2018) 55:1105–11. doi: 10.1007/s00592-018-1211-2
- Fu J, Lee K, Chuang PY, Liu Z, He JC. Glomerular endothelial cell injury and cross talk in diabetic kidney disease. *Am J Physiol Renal Physiol*. (2015) 308:F287–97. doi: 10.1152/ajprenal.00533.2014
- Smith MJ, Simmons KM, Cambier JC. B cells in type 1 diabetes mellitus and diabetic kidney disease. *Nat Rev Nephrol*. (2017) 13:712–20. doi: 10.1038/nrneph.2017.138

10. Tesch GH. Diabetic nephropathy—is this an immune disorder? *Clin Sci (Lond)*. (2017) 131:2183–99. doi: 10.1042/CS20160636
11. Niemir ZI, Stein H, Dworacki G, Mundel P, Koehl N, Koch B, et al. Podocytes are the major source of IL-1 alpha and IL-1 beta in human glomerulonephritides. *Kidney Int*. (1997) 52:393–403. doi: 10.1038/ki.1997.346
12. Tesch GH, Yang N, Yu H, Lan HY, Foti R, Chadban SJ, et al. Intrinsic renal cells are the major source of interleukin-1 beta synthesis in normal and diseased rat kidney. *Nephrol Dial Transpl*. (1997) 12:1109–15. doi: 10.1093/ndt/12.6.1109
13. Zhang C, Boini KM, Xia M, Abais JM, Li X, Liu Q, et al. Activation of Nod-like receptor protein 3 inflammasomes turns on podocyte injury and glomerular sclerosis in hyperhomocysteinemia. *Hypertension*. (2012) 60:154–62. doi: 10.1161/HYPERTENSIONAHA.111.189688
14. Abais JM, Zhang C, Xia M, Liu Q, Gehr TW, Boini KM, et al. NADPH oxidase-mediated triggering of inflammasome activation in mouse podocytes and glomeruli during hyperhomocysteinemia. *Antioxid Redox Signal*. (2013) 18:1537–48. doi: 10.1089/ars.2012.4666
15. Shahzad K, Bock F, Dong W, Wang H, Kopf S, Kohli S, et al. Nlrp3-inflammasome activation in non-myeloid-derived cells aggravates diabetic nephropathy. *Kidney Int*. (2015) 87:74–84. doi: 10.1038/ki.2014.271
16. Ferrario F, Castiglione A, Colasanti G, Barbiano di Belgioioso G, Bertoli S, D'Amico G. The detection of monocytes in human glomerulonephritis. *Kidney Int*. (1985) 28:513–9. doi: 10.1038/ki.1985.158
17. Watson CJ, Khaled WT. Mammary development in the embryo and adult: new insights into the journey of morphogenesis and commitment. *Development*. (2020) 147:dev169862. doi: 10.1242/dev.169862
18. Tan K, Wilkinson MF. A single-cell view of spermatogonial stem cells. *Curr Opin Cell Biol*. (2020) 67:71–8. doi: 10.1016/j.ceb.2020.07.005
19. Konstantinides N, Desplan C. Neuronal differentiation strategies: insights from single-cell sequencing and machine learning. *Development*. (2020) 147:dev193631. doi: 10.1242/dev.193631
20. Gohil SH, Iorgulescu JB, Braun DA, Keskin DB, Livak KJ. Applying high-dimensional single-cell technologies to the analysis of cancer immunotherapy. *Nat Rev Clin Oncol*. (2021). 18:244–56. doi: 10.1038/s41571-020-00449-x
21. Kidman J, Principe N, Watson M, Lassmann T, Holt RA, Nowak AK, et al. Characteristics of TCR repertoire associated with successful immune checkpoint therapy responses. *Front Immunol*. (2020) 11:587014. doi: 10.3389/fimmu.2020.587014
22. Artyomov MN, Van den Bossche J. Immunometabolism in the single-cell era. *Cell Metab*. (2020) 32:710–25. doi: 10.1016/j.cmet.2020.09.013
23. Uyar B, Palmer D, Kowald A, Murua Escobar H, Barrantes I, Moller S, et al. Single-cell analyses of aging, inflammation and senescence. *Ageing Res Rev*. (2020) 64:101156. doi: 10.1016/j.arr.2020.101156
24. Kott KA, Vernon ST, Hansen T, de Dreu M, Das SK, Powell J, et al. Single-cell immune profiling in coronary artery disease: the role of state-of-the-art immunophenotyping with mass cytometry in the diagnosis of atherosclerosis. *J Am Heart Assoc*. (2020) 9:e017759. doi: 10.1161/JAHA.120.017759
25. Zia S, Rawji KS, Michaels NJ, Burr M, Kerr BJ, Healy LM, et al. Microglia diversity in health and multiple sclerosis. *Front Immunol*. (2020) 11:588021. doi: 10.3389/fimmu.2020.588021
26. Nichols RG, Davenport ER. The relationship between the gut microbiome and host gene expression: a review. *Hum Genet*. (2021). 140:747–60. doi: 10.1007/s00439-020-02237-0
27. Wilson PH, Fasanmade K, Anand P. Oro-facial rehabilitation of cancer patients: 'Zygomatic 2019'-1-2 March 2019, London, UK. *Ecancermedicalscience*. (2019) 13:925. doi: 10.3332/ecancer.2019.925
28. Wilson PC, Wu H, Kirita Y, Uchimura K, Ledru N, Rennke HG, et al. The single-cell transcriptomic landscape of early human diabetic nephropathy. *Proc Natl Acad Sci U S A*. (2019) 116:19619–25. doi: 10.1073/pnas.1908706116
29. Parekh S, Ziegenhain C, Vieth B, Enard W, Hellmann I. zUMIs—a fast and flexible pipeline to process RNA sequencing data with UMIs. *Gigascience*. (2018) 7:giy059. doi: 10.1093/gigascience/giy059
30. Stuart T, Butler A, Hoffman P, Hafemeister C, Papalexi E, Mauck WM, III, et al. Comprehensive integration of single-cell data. *Cell*. (2019) 177:1888–902.e21. doi: 10.1016/j.cell.2019.05.031
31. Butler A, Hoffman P, Smibert P, Papalexi E, Satija R. Integrating single-cell transcriptomic data across different conditions, technologies, and species. *Nat Biotechnol*. (2018) 36:411–20. doi: 10.1038/nbt.4096
32. Wu H, Malone AF, Donnelly EL, Kirita Y, Uchimura K, Ramakrishnan SM, et al. Single-cell transcriptomics of a human kidney allograft biopsy specimen defines a diverse inflammatory response. *JASN*. (2018) 29:2069–80. doi: 10.1681/ASN.2018020125
33. Chung JJ, Goldstein L, Chen YJ, Lee J, Webster JD, Roose-Girma M, et al. Single-cell transcriptome profiling of the kidney glomerulus identifies key cell types and reactions to injury. *JASN*. (2020) 31:2341–54. doi: 10.1681/ASN.2020020220
34. Liao J, Yu Z, Chen Y, Bao M, Zou C, Zhang H, et al. Single-cell RNA sequencing of human kidney. *Sci Data*. (2020) 7:4. doi: 10.1038/s41597-019-0351-8
35. Zhang X, Lan Y, Xu J, Quan F, Zhao E, Deng C, et al. CellMarker: a manually curated resource of cell markers in human and mouse. *Nucleic Acids Res*. (2019) 47:D721–8. doi: 10.1093/nar/gky900
36. Patrakka J, Xiao Z, Nukui M, Takemoto M, He L, Oddsson A, et al. Expression and subcellular distribution of novel glomerulus-associated proteins dendrin, ehd3, sh2d4a, plekhh2, and 2310066E14Rik. *J Am Soc Nephrol*. (2007) 18:689–97. doi: 10.1681/ASN.2006060675
37. Lake BB, Chen S, Hoshi M, Plongthongkum N, Salamon D, Knoten A, et al. A single-nucleus RNA-sequencing pipeline to decipher the molecular anatomy and pathophysiology of human kidneys. *Nat Commun*. (2019) 10:2832. doi: 10.1038/s41467-019-10861-2
38. Bindea G, Mlecnik B, Hackl H, Charoentong P, Tosolini M, Kirilovsky A, et al. ClueGO: a Cytoscape plug-in to decipher functionally grouped gene ontology and pathway annotation networks. *Bioinformatics*. (2009) 25:1091–3. doi: 10.1093/bioinformatics/btp101
39. Gu Z, Eils R, Schlesner M. Complex heatmaps reveal patterns and correlations in multidimensional genomic data. *Bioinformatics*. (2016) 32:2847–9. doi: 10.1093/bioinformatics/btw313
40. Wang Y, Wang R, Zhang S, Song S, Jiang C, Han G, et al. iTALK: an R package to characterize and illustrate intercellular communication. *bioRxiv*. (2019) 507871. doi: 10.1101/507871
41. Kalluri AS, Vellarikkal SK, Edelman ER, Nguyen L, Subramanian A, Ellinor PT, et al. Single-cell analysis of the normal mouse aorta reveals functionally distinct endothelial cell populations. *Circulation*. (2019) 140:147–63. doi: 10.1161/CIRCULATIONAHA.118.038362
42. Baelde HJ, Eikmans M, Doran PP, Lappin DW, de Heer E, Bruijn JA. Gene expression profiling in glomeruli from human kidneys with diabetic nephropathy. *Am J Kidney Dis*. (2004) 43:636–50. doi: 10.1053/j.ajkd.2003.12.028
43. Baelde HJ, Eikmans M, Lappin DW, Doran PP, Hohenadel D, Brinkkoetter PT, et al. Reduction of VEGF-A and CTGF expression in diabetic nephropathy is associated with podocyte loss. *Kidney Int*. (2007) 71:637–45. doi: 10.1038/sj.ki.5002101
44. Palau V, Pascual J, Soler MJ, Riera M. Role of ADAM17 in kidney disease. *Am J Physiol Renal Physiol*. (2019) 317:F333–42. doi: 10.1152/ajprenal.00625.2018
45. van der Vorst EPC, Weber C, Donners M. A disintegrin and metalloproteases (ADAMs) in cardiovascular, metabolic and inflammatory diseases: aspects for theranostic approaches. *Thromb Haemost*. (2018) 118:1167–75. doi: 10.1055/s-0038-1660479
46. Dreymueller D, Pruessmeyer J, Groth E, Ludwig A. The role of ADAM-mediated shedding in vascular biology. *Eur J Cell Biol*. (2012) 91:472–85. doi: 10.1016/j.ejcb.2011.09.003
47. van der Vorst EP, Keijbeck AA, de Winther MP, Donners MM. A disintegrin and metalloproteases: molecular scissors in angiogenesis, inflammation and atherosclerosis. *Atherosclerosis*. (2012) 224:302–8. doi: 10.1016/j.atherosclerosis.2012.04.023
48. Sominen HK, Boivin GP, Elased KM. Daily exercise training protects against albuminuria and angiotensin converting enzyme 2 shedding in db/db diabetic mice. *J Endocrinol*. (2014) 221:235–51. doi: 10.1530/JOE-13-0532

49. Lattenet L, Ochodnický P, Ahdi M, Claessen N, Leemans JC, Satchell SC, et al. Renal endothelial protein C receptor expression and shedding during diabetic nephropathy. *J Thromb Haemost.* (2016) 14:1171–82. doi: 10.1111/jth.13315
50. Ford BM, Eid AA, Gooz M, Barnes JL, Gorin YC, Abboud HE. ADAM17 mediates Nox4 expression and NADPH oxidase activity in the kidney cortex of OVE26 mice. *Am J Physiol Renal Physiol.* (2013) 305:F323–32. doi: 10.1152/ajprenal.00522.2012
51. Salem ES, Grobe N, Elased KM. Insulin treatment attenuates renal ADAM17 and ACE2 shedding in diabetic Akita mice. *Am J Physiol Renal Physiol.* (2014) 306:F629–39. doi: 10.1152/ajprenal.00516.2013
52. Soond SM, Everson B, Riches DW, Murphy G. ERK-mediated phosphorylation of Thr735 in TNF α -converting enzyme and its potential role in TACE protein trafficking. *J Cell Sci.* (2005) 118:2371–80. doi: 10.1242/jcs.02357
53. Lee HW, Khan SQ, Khaliqina S, Altintas MM, Grahmmer F, Zhao JL, et al. Absence of miR-146a in podocytes increases risk of diabetic glomerulopathy via up-regulation of ErbB4 and notch-1. *J Biol Chem.* (2017) 292:732–47. doi: 10.1074/jbc.M116.753822
54. Bollee G, Flamant M, Schordan S, Fligny C, Rumpel E, Milon M, et al. Epidermal growth factor receptor promotes glomerular injury and renal failure in rapidly progressive crescentic glomerulonephritis. *Nat Med.* (2011) 17:1242–50. doi: 10.1038/nm.2491
55. Chen J, Chen JK, Harris RC. EGF receptor deletion in podocytes attenuates diabetic nephropathy. *J Am Soc Nephrol.* (2015) 26:1115–25. doi: 10.1681/ASN.2014020192
56. Shi Y, Vanhoutte PM. Reactive oxygen-derived free radicals are key to the endothelial dysfunction of diabetes. *J Diabetes.* (2009) 1:151–62. doi: 10.1111/j.1753-0407.2009.00030.x
57. Shi Y, Vanhoutte PM. Macro- and microvascular endothelial dysfunction in diabetes. *J Diabetes.* (2017) 9:434–49. doi: 10.1111/1753-0407.12521
58. Vanhoutte PM, Zhao Y, Xu A, Leung SW. Thirty years of saying NO: sources, fate, actions, and misfortunes of the endothelium-derived vasodilator mediator. *Circ Res.* (2016) 119:375–96. doi: 10.1161/CIRCRESAHA.116.306531
59. Zhao Y, Vanhoutte PM, Leung SW. Vascular nitric oxide: beyond eNOS. *J Pharmacol Sci.* (2015) 129:83–94. doi: 10.1016/j.jpsh.2015.09.002
60. Lee S, Chen TT, Barber CL, Jordan MC, Murdock J, Desai S, et al. Autocrine VEGF signaling is required for vascular homeostasis. *Cell.* (2007) 130:691–703. doi: 10.1016/j.cell.2007.06.054
61. Windh RT, Lee MJ, Hla T, An S, Barr AJ, Manning DR. Differential coupling of the sphingosine 1-phosphate receptors Edg-1, Edg-3, and H218/Edg-5 to the G(i), G(q), and G(12) families of heterotrimeric G proteins. *J Biol Chem.* (1999) 274:27351–8. doi: 10.1074/jbc.274.39.27351
62. Gaengel K, Niaudet C, Hagikura K, Lavina B, Muhl L, Hofmann JJ, et al. The sphingosine 1-phosphate receptor S1PR1 restricts sprouting angiogenesis by regulating the interplay between VE-cadherin and VEGFR2. *Dev Cell.* (2012) 23:587–99. doi: 10.1016/j.devcel.2012.08.005
63. Imasawa T, Kitamura H, Ohkawa R, Satoh Y, Miyashita A, Yatomi Y. Unbalanced expression of sphingosine 1-phosphate receptors in diabetic nephropathy. *Exp Toxicol Pathol.* (2010) 62:53–60. doi: 10.1016/j.etp.2009.02.068
64. Garcia JG, Liu F, Verin AD, Birukova A, Dechert MA, Gerthoffer WT, et al. Sphingosine 1-phosphate promotes endothelial cell barrier integrity by Edg-dependent cytoskeletal rearrangement. *J Clin Invest.* (2001) 108:689–701. doi: 10.1172/JCI12450
65. Singleton PA, Dudek SM, Ma SF, Garcia JG. Transactivation of sphingosine 1-phosphate receptors is essential for vascular barrier regulation. Novel role for hyaluronan and CD44 receptor family. *J Biol Chem.* (2006) 281:34381–93. doi: 10.1074/jbc.M603680200
66. Allende ML, Yamashita T, Proia RL. G-protein-coupled receptor S1P1 acts within endothelial cells to regulate vascular maturation. *Blood.* (2003) 102:3665–7. doi: 10.1182/blood-2003-02-0460
67. Ben Shoham A, Malkinson G, Krief S, Shwartz Y, Ely Y, Ferrara N, et al. S1P1 inhibits sprouting angiogenesis during vascular development. *Development.* (2012) 139:3859–69. doi: 10.1242/dev.078550
68. Liu Y, Wada R, Yamashita T, Mi Y, Deng CX, Hobson JP, et al. Edg-1, the G protein-coupled receptor for sphingosine-1-phosphate, is essential for vascular maturation. *J Clin Invest.* (2000) 106:951–61. doi: 10.1172/JCI10905
69. Kwon YG, Min JK, Kim KM, Lee DJ, Billiar TR, Kim YM. Sphingosine 1-phosphate protects human umbilical vein endothelial cells from serum-deprived apoptosis by nitric oxide production. *J Biol Chem.* (2001) 276:10627–33. doi: 10.1074/jbc.M011449200
70. Yamamoto R, Aoki T, Koseki H, Fukuda M, Hirose J, Tsuji K, Takizawa K, et al. A sphingosine-1-phosphate receptor type 1 agonist, ASP4058, suppresses intracranial aneurysm through promoting endothelial integrity and blocking macrophage transmigration. *Br J Pharmacol.* (2017) 174:2085–101. doi: 10.1111/bph.13820
71. Nitzsche A, Poittevin M, Benarab A, Bonnin P, Faraco G, Uchida H, et al. Endothelial S1P1 signaling counteracts infarct expansion in ischemic stroke. *Circ Res.* (2021). 128:363–82. doi: 10.1161/CIRCRESAHA.120.316711
72. Wiltshire R, Nelson V, Kho DT, Angel CE, O'Carroll SJ, Graham ES. Regulation of human cerebro-microvascular endothelial baso-lateral adhesion and barrier function by S1P through dual involvement of S1P1 and S1P2 receptors. *Sci Rep.* (2016) 6:19814. doi: 10.1038/srep19814
73. Keul P, van Borren MM, Ghanem A, Muller FU, Baartscheer A, Verkerk AO, et al. Sphingosine-1-phosphate receptor 1 regulates cardiac function by modulating Ca²⁺ sensitivity and Na⁺/H⁺ exchange and mediates protection by ischemic preconditioning. *J Am Heart Assoc.* (2016) 5:e003393. doi: 10.1161/JAHA.116.003393
74. Hu Y, Li M, Gothert JR, Gomez RA, Sequeira-Lopez ML. Hemovascular progenitors in the kidney require sphingosine-1-phosphate receptor 1 for vascular development. *J Am Soc Nephrol.* (2016) 27:1984–95. doi: 10.1681/ASN.2015060610
75. Zeng Y, Adamson RH, Curry FR, Tarbell JM. Sphingosine-1-phosphate protects endothelial glycocalyx by inhibiting syndecan-1 shedding. *Am J Physiol Heart Circ Physiol.* (2014) 306:H363–72. doi: 10.1152/ajpheart.00687.2013
76. Salvucci O, de la Luz Sierra M, Martina JA, McCormick PJ, Tosato G. EphB2 and EphB4 receptors forward signaling promotes SDF-1-induced endothelial cell chemotaxis and branching remodeling. *Blood.* (2006) 108:2914–22. doi: 10.1182/blood-2006-05-023341
77. Sawamiphak S, Seidel S, Essmann CL, Wilkinson GA, Pitulescu ME, Acker T, et al. Ephrin-B2 regulates VEGFR2 function in developmental and tumour angiogenesis. *Nature.* (2010) 465:487–91. doi: 10.1038/nature08995
78. Wang Y, Nakayama M, Pitulescu ME, Schmidt TS, Bochenek ML, Sakakibara A, et al. Ephrin-B2 controls VEGF-induced angiogenesis and lymphangiogenesis. *Nature.* (2010) 465:483–6. doi: 10.1038/nature09002
79. Salvucci O, Tosato G. Essential roles of EphB receptors and EphrinB ligands in endothelial cell function and angiogenesis. *Adv Cancer Res.* (2012) 114:21–57. doi: 10.1016/B978-0-12-386503-8.00002-8
80. Hampton-O'Neil LA, Severn CE, Cross SJ, Gurung S, Nobes CD, Teye AM. Ephrin/Eph receptor interaction facilitates macrophage recognition of differentiating human erythroblasts. *Haematologica.* (2020) 105:914–24. doi: 10.3324/haematol.2018.215160
81. Rerolle JP, Hertig A, Nguyen G, Sraer JD, Rondeau EP. Plasminogen activator inhibitor type 1 is a potential target in renal fibrogenesis. *Kidney Int.* (2000) 58:1841–50. doi: 10.1111/j.1523-1755.2000.00355.x
82. Salaru DL, Mertens PR and Bartsch P. Loss of heparin-binding protein prevents necrotizing glomerulonephritis: first clues hint at plasminogen activator inhibitor-1. *Int Urol Nephrol.* 2013;45:1483-7. doi: 10.1007/s11255-013-0415-1
83. Bajou K, Maillard C, Jost M, Lijnen RH, Gils A, Declercq P, et al. Host-derived plasminogen activator inhibitor-1 (PAI-1) concentration is critical for *in vivo* tumoral angiogenesis and growth. *Oncogene.* (2004) 23:6986–90. doi: 10.1038/sj.onc.1207859
84. Eddy AA, Fogo AB. Plasminogen activator inhibitor-1 in chronic kidney disease: evidence and mechanisms of action. *J Am Soc Nephrol.* (2006) 17:2999–3012. doi: 10.1681/ASN.2006050503
85. Preissner KT, Kanse SM, May AE. Urokinase receptor: a molecular organizer in cellular communication. *Curr Opin Cell Biol.* (2000) 12:621–8. doi: 10.1016/S0955-0674(00)00141-1

86. Degryse B, Neels JG, Czekay RP, Aertgeerts K, Kamikubo Y, Loskutoff DJ. The low density lipoprotein receptor-related protein is a mitogenic receptor for plasminogen activator inhibitor-1. *J Biol Chem.* (2004) 279:22595–604. doi: 10.1074/jbc.M313004200
87. Georgakopoulos A, Marambaud P, Friedrich VL, Jr., Shioi J, Efthimiopoulos S, Robakis NK. Presenilin-1: a component of synaptic and endothelial adherens junctions. *Ann N Y Acad Sci.* (2000) 920:209–14. doi: 10.1111/j.1749-6632.2000.tb06924.x
88. Nakajima M, Yuasa S, Ueno M, Takakura N, Koseki H, Shirasawa T. Abnormal blood vessel development in mice lacking presenilin-1. *Mech Dev.* (2003) 120:657–67. doi: 10.1016/S0925-4773(03)00064-9
89. Hynes RO. Integrins: bidirectional, allosteric signaling machines. *Cell.* (2002) 110:673–87. doi: 10.1016/S0092-8674(02)00971-6
90. Hynes RO. The emergence of integrins: a personal and historical perspective. *Matrix Biol.* (2004) 23:333–40. doi: 10.1016/j.matbio.2004.08.001
91. Marek I, Hilgers KF, Rascher W, Woelfle J, Hartner A. A role for the alpha-8 integrin chain (itga8) in glomerular homeostasis of the kidney. *Mol Cell Pediatr.* (2020) 7:13. doi: 10.1186/s40348-020-00105-5
92. Mezu-Ndubuisi OJ, Maheshwari A. The role of integrins in inflammation and angiogenesis. *Pediatr Res.* (2020). doi: 10.1038/s41390-020-01177-9. [Epub ahead of print].
93. Hartner A, Schocklmann H, Prols F, Muller U, Sterzel RB. Alpha8 integrin in glomerular mesangial cells and in experimental glomerulonephritis. *Kidney Int.* (1999) 56:1468–80. doi: 10.1046/j.1523-1755.1999.00662.x
94. Lu Y, Ye Y, Yang Q, Shi S. Single-cell RNA-sequence analysis of mouse glomerular mesangial cells uncovers mesangial cell essential genes. *Kidney Int.* (2017) 92:504–13. doi: 10.1016/j.kint.2017.01.016
95. Bieritz B, Spessotto P, Colombatti A, Jahn A, Prols F, Hartner A. Role of alpha8 integrin in mesangial cell adhesion, migration, and proliferation. *Kidney Int.* (2003) 64:119–27. doi: 10.1046/j.1523-1755.2003.00057.x
96. Benoit YD, Lussier C, Ducharme PA, Sivret S, Schnapp LM, Basora N, et al. Integrin alpha8beta1 regulates adhesion, migration and proliferation of human intestinal crypt cells via a predominant RhoA/ROCK-dependent mechanism. *Biol Cell.* (2009) 101:695–708. doi: 10.1042/BC20090060
97. Hartner A, Marek I, Cordasic N, Haas C, Schocklmann H, Hulsmann-Volkert G, et al. Glomerular regeneration is delayed in nephritic alpha 8-integrin-deficient mice: contribution of alpha 8-integrin to the regulation of mesangial cell apoptosis. *Am J Nephrol.* (2008) 28:168–78. doi: 10.1159/000110022
98. Marek I, Becker R, Fahlbusch FB, Menendez-Castro C, Rascher W, Daniel C, et al. Expression of the alpha8 integrin chain facilitates phagocytosis by renal mesangial cells. *Cell Physiol Biochem.* (2018) 45:2161–73. doi: 10.1159/000488160
99. Sherman MP. New concepts of microbial translocation in the neonatal intestine: mechanisms and prevention. *Clin Perinatol.* (2010) 37:565–79. doi: 10.1016/j.clp.2010.05.006
100. Khan S, Lakhe-Reddy S, McCarty JH, Sorenson CM, Sheibani N, Reichardt LF, et al. Mesangial cell integrin $\alpha\beta 8$ provides glomerular endothelial cell cytoprotection by sequestering TGF- β and regulating PECAM-1. *Am J Pathol.* (2011) 178:609–20. doi: 10.1016/j.ajpath.2010.10.031
101. Sabbineni H, Verma A, Somanath PR. Isoform-specific effects of transforming growth factor β on endothelial-to-mesenchymal transition. *J Cell Physiol.* (2018) 233:8418–28. doi: 10.1002/jcp.26801
102. Mulligan MS, Johnson KJ, Todd RF, III, Issekutz TB, Miyasaka M, Tamatani T, et al. Requirements for leukocyte adhesion molecules in nephrotoxic nephritis. *J Clin Invest.* (1993) 91:577–87. doi: 10.1172/JCI116237
103. Wu X, Tiwari AK, Issekutz TB, Lefkowitz JB. Differing roles of CD18 and VLA-4 in leukocyte migration/activation during anti-GBM nephritis. *Kidney Int.* (1996) 50:462–72. doi: 10.1038/ki.1996.337
104. Xie Y, Sakatsume M, Nishi S, Narita I, Arakawa M, Gejyo F. Expression, roles, receptors, and regulation of osteopontin in the kidney. *Kidney Int.* (2001) 60:1645–57. doi: 10.1046/j.1523-1755.2001.00032.x
105. Nasarre P, Kusy S, Constantin B, Castellani V, Drabkin HA, Bagnard D, et al. Semaphorin SEMA3F has a repulsing activity on breast cancer cells and inhibits E-cadherin-mediated cell adhesion. *Neoplasia.* (2005) 7:180–9. doi: 10.1593/neo.04481
106. Tam KJ, Hui DHF, Lee WW, Dong M, Tombe T, Jiao IZF, et al. Semaphorin 3C drives epithelial-to-mesenchymal transition, invasiveness, and stem-like characteristics in prostate cells. *Sci Rep.* (2017) 7:11501. doi: 10.1038/s41598-017-11914-6
107. Hou ST, Nilchi L, Li X, Gangaraju S, Jiang SX, Aylsworth A, et al. Semaphorin3A elevates vascular permeability and contributes to cerebral ischemia-induced brain damage. *Sci Rep.* (2015) 5:7890. doi: 10.1038/srep07890
108. Oh WJ, Gu C. The role and mechanism-of-action of Sema3E and Plexin-D1 in vascular and neural development. *Semin Cell Dev Biol.* (2013) 24:156–62. doi: 10.1016/j.semcdb.2012.12.001
109. Zhou Y, Gunput RA, Pasterkamp RJ. Semaphorin signaling: progress made and promises ahead. *Trends Biochem Sci.* (2008) 33:161–70. doi: 10.1016/j.tibs.2008.01.006
110. Nasarre P, Gemmill RM, Drabkin HA. The emerging role of class-3 semaphorins and their neuropilin receptors in oncology. *Onco Targets Ther.* (2014) 7:1663–87. doi: 10.2147/OTT.S37744
111. Valiulyte I, Steponaitis G, Kardonaite D, Tamasauskas A, Kazlauskas A. A SEMA3 signaling pathway-based multi-biomarker for prediction of glioma patient survival. *Int J Mol Sci.* (2020) 21:7396. doi: 10.3390/ijms21197396
112. Toledano S, Nir-Zvi I, Engelman R, Kessler O, Neufeld G. Class-3 semaphorins and their receptors: potent multifunctional modulators of tumor progression. *Int J Mol Sci.* (2019) 20:556. doi: 10.3390/ijms20030556
113. Alto LT, Terman JR. Semaphorins and their signaling mechanisms. *Methods Mol Biol.* (2017) 1493:1–25. doi: 10.1007/978-1-4939-6448-2_1
114. Pricop L, Salmon JE, Edberg JC, Beavis AJ. Flow cytometric quantitation of attachment and phagocytosis in phenotypically-defined subpopulations of cells using PKH26-labeled Fc gamma R-specific probes. *J Immunol Methods.* (1997) 205:55–65. doi: 10.1016/S0022-1759(97)00053-7
115. Ji JD, Park-Min KH, Ivashkiv LB. Expression and function of semaphorin 3A and its receptors in human monocyte-derived macrophages. *Hum Immunol.* (2009) 70:211–7. doi: 10.1016/j.humimm.2009.01.026
116. Zhang XH, Wang CC, Jiang Q, Yang SM, Jiang H, Lu J, et al. ADAM28 overexpression regulated via the PI3K/Akt pathway is associated with relapse in *de novo* adult B-cell acute lymphoblastic leukemia. *Leuk Res.* (2015). doi: 10.1016/j.leukres.2015.08.006. [Epub ahead of print].
117. Zhang Y, Zhu G, Xiao H, Liu X, Han G, Chen G, et al. CD19 regulates ADAM28-mediated Notch2 cleavage to control the differentiation of marginal zone precursors to MZ B cells. *J Cell Mol Med.* (2017) 21:3658–69. doi: 10.1111/jcmm.13276

Conflict of Interest: The authors declare that the research was conducted in the absence of any commercial or financial relationships that could be construed as a potential conflict of interest.

Copyright © 2021 Li, Shen, Li, Leung, Zhu and Shi. This is an open-access article distributed under the terms of the Creative Commons Attribution License (CC BY). The use, distribution or reproduction in other forums is permitted, provided the original author(s) and the copyright owner(s) are credited and that the original publication in this journal is cited, in accordance with accepted academic practice. No use, distribution or reproduction is permitted which does not comply with these terms.