



## Case report

## Melioidosis mycotic aneurysm: An uncommon complication of an uncommon disease

Philip H. Li<sup>\*</sup>, Chi Hung Chau, Poon Chuen Wong

Tuberculosis and Chest Unit, Grantham Hospital, Hong Kong

## A B S T R A C T

## Keywords:

Melioidosis  
*Burkholderia pseudomallei*  
 Mycotic aneurysms

Melioidosis is often considered an exotic and uncommon disease in most parts of the world. However it is an endemic disease in Southeast Asia and Northern Australia with an expanding distribution. Melioidosis can involve almost any organ and can deteriorate rapidly. In this report, we describe a rapidly fatal case of a mycotic aneurysm associated with melioidosis despite aggressive antibiotic therapy. The morbidity and mortality of this uncommon complication remains high despite prompt diagnosis and treatment. Especially when treating persistent/recurrent melioidosis, the physician's caution to the development of mycotic aneurysms is imperative so that early treatment and surgical intervention may be considered.

© 2014 The Authors. Published by Elsevier Ltd. This is an open access article under the CC BY-NC-ND license (<http://creativecommons.org/licenses/by-nc-nd/4.0/>).

## Introduction

Melioidosis is a granulomatous infectious disease caused by the aerobic Gram-negative bacillus *Burkholderia pseudomallei* usually found in contaminated water and soil. It is considered a rare disease in most parts of the world but is endemic in Southeast Asia and Northern Australia. It often presents as community-acquired pneumonia and sepsis, but can involve almost any part of the body. In this case report, we illustrate a rare but fatal complication of this increasingly reported and important disease.

## Case report

An 82 year old man presented with fever and cough for a few days. He was an ex-smoker and ex-social drinker, and had history of myocardial infarction treated by coronary angioplasty with stenting 4 years ago. The patient was a retired water pipe worker with good functional status. There was no history of diabetes, renal or lung disease.

Upon admission, chest x-ray (CXR) showed right lower zone consolidation and blood/urine biochemistry revealed hyponatremia consistent with syndrome of inappropriate antidiuretic hormone secretion (SIADH). Complete blood count (CBC) was

unremarkable but inflammatory markers (erythrocyte sedimentation rate [ESR], C-reactive protein [CRP]) were elevated. The case was treated as community-acquired pneumonia and he was started on empirical intravenous amoxicillin + clavulanate and azithromycin. He improved with treatment but blood culture yielded *B. pseudomallei* (sensitive to ceftazidime). Computed tomography (CT) scan showed bilateral lower and right middle lobe consolidation; the abdomen and pelvis were unremarkable and there was no evidence of other organ involvement. He was treated with a three week course of intravenous ceftazidime and then switched to an eradication phase of oral amoxicillin + clavulanate and doxycycline for three more months. There was complete resolution of symptoms and serial CXRs were clear. Repeat blood culture showed clearance of *B. pseudomallei*. Reassessment CT performed in August 2014 showed largely resolved consolidative changes. The patient completed the course of oral antibiotics in September 2014. He remained well and there was no significant travel or contact history.

However he experienced fever and cough again three weeks after cessation of antibiotic therapy. CXR on presentation showed no new abnormalities, but blood tests again confirmed SIADH with raised inflammatory markers and *B. pseudomallei* septicaemia (sensitive to ceftazidime). He was restarted on ceftazidime but his symptoms and fever persisted. Ceftazidime was switched to meropenam but still without signs of clinical improvement. Serial blood cultures showed persistent *B. pseudomallei* septicaemia without change in antibiotic susceptibility. Whole body positron emission tomography–CT (PET–CT) was performed, which revealed

<sup>\*</sup> Corresponding author. Tuberculosis and Chest Unit, Grantham Hospital, 125 Wong Chuk Hang Road, Aberdeen, Hong Kong. Tel.: +852 25182111.  
 E-mail address: [phileh.li@gmail.com](mailto:phileh.li@gmail.com) (P.H. Li).

a new heterogeneous hyperdense mass at the left side of the superior mediastinum associated elevated fluorodeoxyglucose (FDG) uptake, consistent with mycotic aneurysm of the aortic arch/left subclavian artery; and patchy FDG uptakes are noted within the vertebral bodies of the cervical and thoracic spine, suggestive of possible bone involvement (Fig. 1). Echocardiogram showed a structurally normal heart and no vegetations were seen. The dihydrothodamine reduction (DHR) test revealed a low oxidative burst response.

In view of possible intravascular/bone involvement, the meropenam dose was escalated and doxycycline was added but still without clinical improvement. The patient was assessed by our cardiothoracic and vascular teams, but was deemed not suitable for surgery. Doxycycline was replaced by intravenous minocycline, and moxifloxacin was also added. However blood cultures were persistently positive for *B. pseudomallei* and the patient continued a downhill course. Serial CXR and CT (Fig. 2) showed rapid interval enlargement of aortic arch aneurysm. Despite continued antibiotic and supportive treatment, the patient complained of sudden onset of neck pain which was followed by massive haemoptysis. He succumbed on the same day, just within three weeks since his presentation of melioidosis relapse.

## Discussion

Melioidosis is a granulomatous infectious disease caused by the aerobic Gram-negative bacillus *B. pseudomallei*. It is an environmental organism found in soils (classically rice paddy fields) and contaminated waters. It is endemic in Southeast Asia and Northern Australia with an expanding geographical distribution [1]. Like many soil bacteria, it is a difficult organism to kill, with an incubation period ranging from 2 days to 26 years [2] and can survive even in distilled water for up to 16 years [3]. Our patient was born in Hong Kong and had never resided in a village with rice paddy

fields. It is likely that our patient was infected locally, given the increasing reports of melioidosis in our locality [1,4] as well his previous occupation as a water pipe worker. Although often presenting as community-acquired pneumonia and sepsis, melioidosis can involve almost any part of the body. In this case report, we illustrate a rare but fatal complication of this increasingly reported and important disease.

The disease can manifest as either acute or chronic forms and has a wide range of presentations. Acute disease is defined as symptoms lasting for less than two months and chronic disease is defined as symptoms persisting for longer than two months [5]. Acute melioidosis is more common and, such as in this case, around half of patients present with chest complaints and are often indistinguishable from other forms of community-acquired pneumonia. Other common presentations include skin infections, genitourinary infections, osteomyelitis/septic arthritis and internal organ abscesses (especially prostatic, splenic, kidney and liver abscesses) [6]. Acute suppurative parotitis is a characteristic manifestation of melioidosis amongst children in Thailand, and has been reported to account for around a third of all paediatric cases [7].

Melioidosis is also a rare but well documented cause of mycotic aneurysms [8–10] and is described to occur in around 1% of affected patients. In fact, *B. pseudomallei* was reported as the most common causative agent of mycotic aneurysm in North-eastern Thailand [10]. As with other causes of mycotic aneurysms, the proposed mechanism is haematogenous seeding of previously damaged arteriosclerotic vessels. Prolonged antibiotic therapy with surgical intervention is considered the most appropriate management for melioidosis-associated mycotic aneurysms. *B. pseudomallei* is intrinsically resistant to many antibiotics and current recommendations for antibiotic treatment includes initial an intravenous intensive phase of at least 10–14 days and followed by an oral eradication phase [11]. Usual first-line therapy for the intensive phase of treatment includes ceftazidime or a carbapenem.

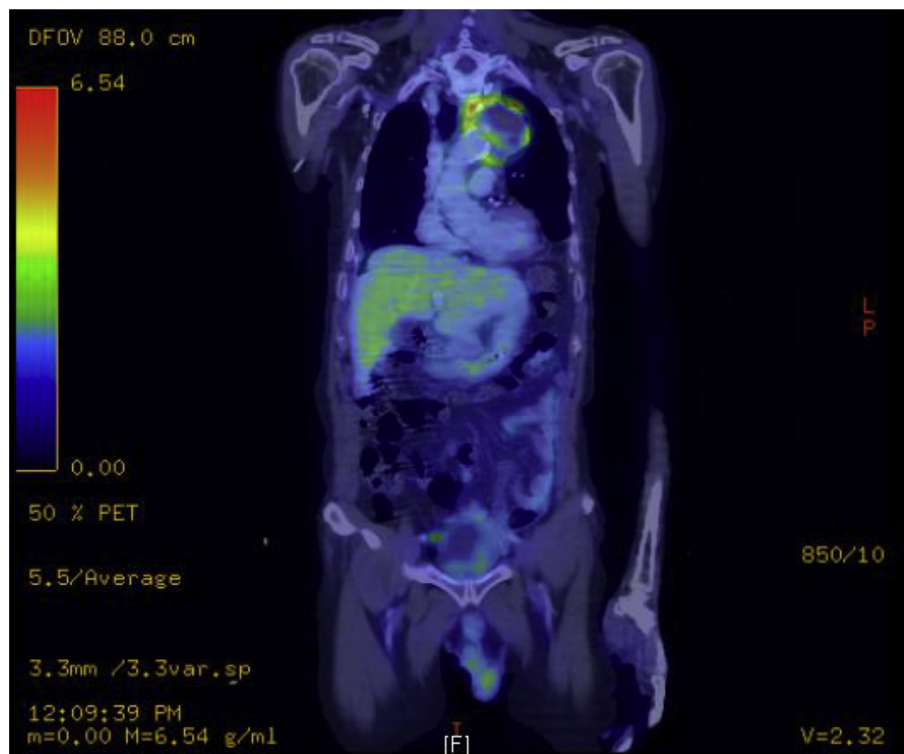


Fig. 1. PET-CT showing hypermetabolic mass at the left side of the superior mediastinum, consistent with mycotic aneurysm of the aortic arch/left subclavian artery.

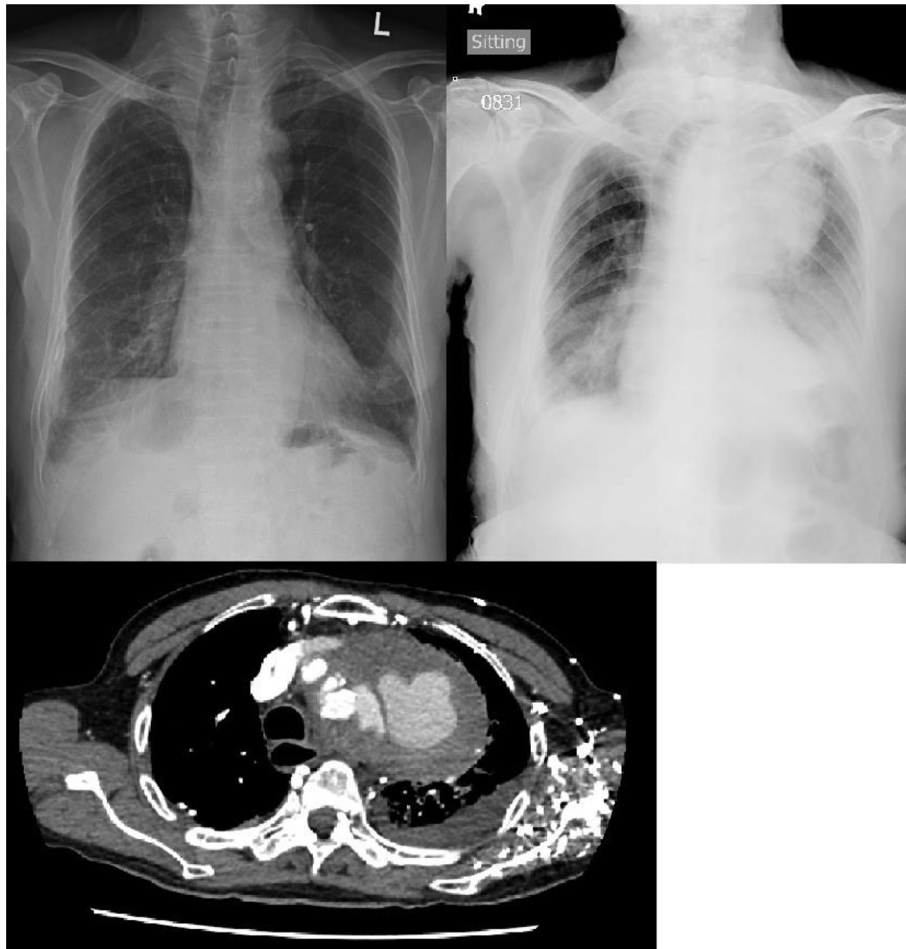


Fig. 2. Serial CXRs, taken 10 days apart (top) and contrast CT (bottom) showing rapid interval enlargement of the mycotic aneurysm.

Previous practice of adding trimethoprim/sulfamethoxazole (TMP-SMX) has not shown to have long-term outcome benefit [12] and ceftazidime alone is adequate for the intravenous phase in the majority of cases. For the oral eradication phase, the recommended minimum duration of treatment is 12 weeks. Although TMP-SMX (with or without doxycycline) is the recommended first-line drug, it is associated with significant adverse effects and intolerance which can lead to poor drug compliance. As an alternative, consensus guidelines for use of amoxicillin/clavulanic acid have also been developed [13].

Despite completing a full course of therapy, the patient experienced a recurrence of melioidosis and subsequently failed to respond to multiple lines of treatment. Relapse of melioidosis is considered rare with appropriate antibiotic therapy [14,15] and there was also no evidence to suggest reinfection. Risk factors for melioidosis include diabetes, hazardous alcohol use, chronic lung disease and chronic renal disease [6]. Although the patient had none of these risk factors, a low oxidative burst response was observed on the DHR test. The DHR test is commonly used to test for chronic granulomatous disease (CGD), a primary immunodeficiency characterized by defective generation of a respiratory burst in phagocytes which leads to recurrent bacterial/fungal infections associated with granuloma formation. Interestingly, CGD is strongly associated with melioidosis and it has also been reported that melioidosis could be the presenting infection in CGD patients without the classical clinical phenotype (even in adults) [16]. *B. pseudomallei* can multiply within phagocytes and functional neutrophil defects may be important in disease pathogenesis [17].

Although further testing would be required to confirm the presence of any immunodeficiency, an impaired phagocytic function may have contributed to the patient's persistent and fulminant course of infection despite aggressive antibiotic therapy.

This case illustrates a rare but fatal complication of an emerging disease. Melioidosis can involve almost any organ and can deteriorate rapidly. The morbidity and mortality of melioidosis-associated mycotic aneurysms are high despite prompt diagnosis and treatment. Especially when treating persistent/recurrent melioidosis, the physician's caution to the development of mycotic aneurysms is imperative so that early treatment and surgical intervention may be considered.

#### Acknowledgements

None.

#### References

- [1] Currie BJ, Dance DA, Cheng AC. The global distribution of *Burkholderia pseudomallei* and melioidosis: an update. *Trans R Soc Trop Med Hyg* 2008;102(Suppl. 1):S1–4.
- [2] Mays EE, Ricketts EA. Melioidosis: recrudescence associated with bronchogenic carcinoma twenty-six years following initial geographic exposure. *Chest* 1975;68(2):261–3.
- [3] Pumpuang A, Chantratita N, Wikraiphat C, Saiprom N, Day NP, Peacock SJ, et al. Survival of *Burkholderia pseudomallei* in distilled water for 16 years. *Trans R Soc Trop Med Hyg* 2011;105(10):598–600.

- [4] Lau SKP, Chan SY, Curreem SOT, Hui SW, Lau CCY, Lee P, et al. Burkholderia pseudomallei in soil samples from an oceanarium in Hong Kong detected using a sensitive PCR assay. *Emerg Microbes Infect* 2014;3:e69.
- [5] Currie BJ, Fisher DA, Anstey NM, Jacups SP. Melioidosis: acute and chronic disease, relapse and re-activation. *Trans R Soc Trop Med Hyg* 2000;94(3):301–4.
- [6] Currie BJ, Ward L, Cheng AC. The epidemiology and clinical spectrum of melioidosis: 540 cases from the 20 year Darwin prospective study. *PLoS Neglected Trop Dis* 2010;4(11):e900.
- [7] Dance DA, Davis TM, Wattanagoon Y, Chaowagul W, Saiphon P, Looareesuwan S, et al. Acute suppurative parotitis caused by *Pseudomonas pseudomallei* in children. *J Infect Dis* 1989;159(4):654–60.
- [8] Low JG, Quek AM, Sin YK, Ang BS. Mycotic aneurysm due to Burkholderia pseudomallei infection: case reports and literature review. *Clin Infect Dis* 2005;40(1):193–8.
- [9] Currie BJ, Fisher DA, Howard DM, Burrow JN, Lo D, Selva-Nayagam S, et al. Endemic melioidosis in tropical northern Australia: a 10-year prospective study and review of the literature. *Clin Infect Dis* 2000;31(4):981–6.
- [10] Anunnatsiri S, Chetchotisakd P, Kularbkaew C. Mycotic aneurysm in Northeast Thailand: the importance of Burkholderia pseudomallei as a causative pathogen. *Clin Infect Dis* 2008;47(11):1436–9.
- [11] Lipsitz R, Garges S, Aurigemma R, Baccam P, Blaney DD, Cheng AC, et al. Workshop on treatment of and postexposure prophylaxis for Burkholderia pseudomallei and B. mallei Infection, 2010. *Emerg Infect Dis* 2012;18(12):e2.
- [12] Chierakul W, Anunnatsiri S, Chaowagul W, Peacock SJ, Chetchotisakd P, Day NP. Addition of trimethoprim-sulfamethoxazole to ceftazidime during parenteral treatment of melioidosis is not associated with a long-term outcome benefit. *Clin Infect Dis* 2007;45(4):521–3.
- [13] Cheng AC, Chierakul W, Chaowagul W, Chetchotisakd P, Limmathurotsakul D, Dance DA, et al. Consensus guidelines for dosing of amoxicillin-clavulanate in melioidosis. *Am J Trop Med Hyg* 2008;78(2):208–9.
- [14] Maharjan B, Chantratita N, Vesaratchaveit M, Cheng A, Wuthiekanun V, Chierakul W, et al. Recurrent melioidosis in patients in northeast Thailand is frequently due to reinfection rather than relapse. *J Clin Microbiol* 2005;43(12):6032–4.
- [15] Sarovich DS, Ward L, Price EP, Mayo M, Pitman MC, Baird RW, et al. Recurrent melioidosis in the Darwin Prospective Melioidosis Study: improving therapies mean that relapse cases are now rare. *J Clin Microbiol* 2014;52(2):650–3.
- [16] Lee PP, Lau YL. Endemic infections in Southeast Asia provide new insights to the phenotypic spectrum of primary immunodeficiency disorders. *Asian Pac J Allergy Immunol* 2013;31(3):217–26.
- [17] Cheng AC, Currie BJ. Melioidosis: epidemiology, pathophysiology, and management. *Clin Microbiol Rev* 2005;18(2):383–416.