

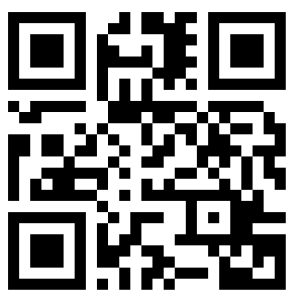
Effect of different combinations of surface treatment on adhesion of resin composite to zirconia

This article was published in the following Dove Press journal:
Clinical, Cosmetic and Investigational Dentistry

Jihad Saade¹
Hasan Skienhe²
Hani Ounsi³
Jukka P Matinlinna⁴
Ziad Salameh⁵

¹Faculty of Dental Medicine, Lebanese University, Beirut, Lebanon; ²Department of Prosthodontics, Faculty of Dental Medicine, Lebanese University, Beirut, Lebanon; ³Department of Restorative Dentistry and Endodontics, Faculty of Dental Medicine, Lebanese University, Beirut, Lebanon; ⁴Dental Materials Science, Faculty of Dentistry, University of Hong Kong, Sai Ying Pun, Hong Kong; ⁵Research Center, Faculty of Dental Medicine, Lebanese University, Beirut, Lebanon

→ Video abstract



Point your SmartPhone at the code above. If you have a QR code reader the video abstract will appear. Or use:
<https://youtu.be/25kjldldcofk>

Correspondence: Jihad Saade
Faculty of Dental Medicine, Lebanese University, Beirut, Lebanon
Tel +961 376 3404
Email jihadsaade00@gmail.com

Purpose: The purpose of this laboratory study was to evaluate the effect of different surface treatment combinations on resin zirconia bonding.

Materials and methods: One hundred and five pre-sintered zirconia quadrangles were prepared out of zirconia blocks, polished, then sintered and divided into five groups (n=21). Group I (control): samples were untreated, group II: grit-blasting with 50 µm alumina particles, group III: grit-blasting with 100 µm alumina particles, group IV: Er,Cr:YSGG laser, and group V: selective infiltration etching technique. Microstructural analysis was performed using scanning electron microscopy, atomic force microscopy, a diffractometer, and a profilometer. Cylinders of composite resin were luted with Panavia resin composite cement and Clearfil ceramic primer. Shear bond strength (SBS) was determined using a universal testing machine.

Results: SBS results were analyzed using one-way ANOVA followed by Tukey *post hoc* tests for multiple comparisons. The level of significance was set to 0.05. SBS values of the studied groups II, III, IV, and V were 16.2±1.8 MPa, 15.7±3.7 MPa, 14.8±3.4 MPa, and 16.8±3.0 MPa, respectively. All values were significantly higher than the control group (10.48±1.80 MPa), but without a significant difference between them. Group III exhibited the roughest surface, and Group I had a more significantly reduced surface roughness value than any other group. Group III presented the highest significant increase of tetragonal to monoclinic phase transformation (13%).

Conclusion: The use of grit-blasting with greater particles size enhanced SBS with resin composite cement, but induced a higher amount of monoclinic phase transformation. The use of primer based on adhesive monomer with the resin cement is required to enhance the bonding efficiency. The use of laser enhanced the surface roughness and the bonding ability to zirconia.

Keywords: air abrasion, laser, MDP primer, resin cement

Introduction

The development of computer aided design and computer aided manufacturing (CAD-CAM) technology in dentistry has led to the introduction of a new generation of all ceramic materials such as zirconia. Zirconia still remains one of the mostly used materials using this technology. It is a polymorphic ceramic material, and it has three crystallographic forms: monoclinic (M), from room temperature to 1,170°C; tetragonal (T), from 1,170°C to 2,370°C; and cubic (C), from 2,370°C to the melting point.^{1,2} The high strength, biocompatibility, and esthetic properties of zirconia make it the best substitute to porcelain fused to metal restoration.³

Since the mid-1990s, several surface conditioning methods and protocols have been developed to enhance the bonding ability to zirconia ceramics. At large, adhesion is based on the micro-mechanical interlocking by using subtractive or additive techniques (coatings) and chemical activation of the surface by adhesive monomers.⁴ Among the most reported surface treatment in the literature are air abrasion with alumina particles, selective infiltration etching,⁵ laser treatment,⁶ tribochemical silica-coating,⁷ and some other silica-coating methods.⁸ Silica-coating is necessary because the glass-free structural composition of zirconia surface makes it resistant to normal clinical etching using the conventional hydrofluoric acid, HF, used with glass ceramic.^{9,10}

The regular zirconia surface pretreatment method used in dental laboratories is grit-blasting with alumina particles of an average size of 50 μm or 110 μm . Numerous studies have suggested high bond (adhesion) strength values after grit-blasting in combination with primers or cement that are based on some adhesive monomers.¹¹ The most common adhesive monomers that create a chemical bond to the oxide layer are: phosphate ester monomer 10-methacryloyloxydecyl dihydrogenphosphate (10-MDP), 4-methacryloyloxyethyl trimellitic anhydride (4-META), and thiophosphoric acid methacrylate (MEPS).^{12,13}

Artificial aging is one of the most important factors for simulating the estimated clinical performance of a restoration since mechanical stresses, temperature, and humid environment can influence the degradation of bonding to zirconia.^{14,15}

Aurelio et al concluded that grit blasting improved the flexural strength of zirconia, regardless of the presence or absence of aging.¹⁶ Amaral et al showed that the increase of flexural strength is due to the toughening mechanism,¹⁷ and other studies stated that the formation of a protective compression layer on the zirconia surface may decrease the detrimental effects of aging on the specimens.^{18,19}

However, grit-blasting subjected the zirconia surface to high stress that led to crack growth.²⁰ This could affect the strength and impair the long-term clinical success of zirconia when exposed to the humid environment and mechanical stresses in the oral cavity.²¹

The use of laser energy for the zirconia surface treatment is of interest and has been reported in several studies. Results have shown that a Nd:YAG laser increased the surface roughness and wettability and bond strength to resin cement.^{22,23}

Some studies have shown a variability of results that could be due to the laser type and different parameters used for surface treatments.²⁴

In spite of this disparity, the use of a Er,Cr:YSGG laser could be an alternative zirconia surface treatment technique to the other methods conventionally used.

The aim of this laboratory study was to evaluate different zirconia surface treatments and their effect on the surface morphology and bond strength of the adhesive system used with zirconia.

The hypotheses tested were: 1) that the different surface treatments evaluated on the zirconia surface would not significantly increase the shear bond strength between zirconia and resin cement; and 2) that the abrasive particles, laser treatment, and selective infiltration etching would not affect the surface morphology, surface roughness, or phase transformation of zirconia.

Materials and methods

Samples preparation

One hundred and five quadrangles shaped specimens of pre-sintered 3mol% yttria-stabilized zirconia (Amman GIRRbach, Koblach, Austria) were prepared using a 5-axis-milling device (Ceramill 2, Amman GIRRbach, Koblach, Austria) and a low-speed diamond disc (Buehler, Lake Buff, WI, USA). Each specimen was 3 mm high, 10 mm wide, and 10 mm long. Specimens were polished with silicon carbide grit paper #400 (Grit flex, Italy) for surface standardization,²⁵ and they were then subjected to oil free high pressure airflow for 1 minute. Specimens were then sintered in a sintering furnace (Amman GIRRbach, Ceramil therm, Austria) at a heat rate of 10°C/min to the final temperature 1,450°C with a 120 minute holding time.

Surface treatment protocols

Specimens were randomly divided into five study groups (n=21) according to the surface treatment performed (Table 1):

Group I: (Control) as sintered.

Group II: The surface of sintered Specimens was grit-blasted with 50 μm Al₂O₃ particles (Vacumat 300, Vita Zahnfabrik, Germany) for 15 seconds under 3.5 bars pressure at a working distance of 10 mm evenly.

Group III: The surface sintered specimens were grit-blasted with 100 μm Al₂O₃ particles for 15 seconds and under 3.5 bar pressure at a working distance of 10 mm.

Group IV: The zirconia surface was treated by a laser (Er, Cr: YSGG laser, Water lase MD system,

Table I Surface treatments protocols

Group	Description	Surface treatment protocols
I	Control	As sintered.
II	50 μm Al_2O_3	Grit-blasted with 50 μm alumina particles for 15 seconds under 3.5 bars pressure at a working distance of 10 mm.
III	100 μm Al_2O_3	Grit-blasted with 100 μm alumina particles for 15 seconds under 3.5 bars pressure at a working distance of 10 mm.
IV	Er,Cr:YSGG laser	Er,Cr:YSGG laser, for 2 minutes at a power of 5.5 W, 20 Hz with 100 mJ energy.
V	Selective infiltration etching	Grit papers #200–800, a thin layer of low-fusing melting glass was applied on the zirconia surface. The samples were then heated to 750°C for 2 minutes, cooled to 650°C for 1 minute, reheated to 750°C for an additional 1 minute, and then cooled to room temperature. The specimens were then immersed in a bath of 9% hydrofluoric acid for 20 minutes.

Biolase, San Clemente, CA, USA) for 2 minutes. A custom-made computerized robot was used to standardize the application of laser and exclude the human factor. The laser was set at a power of 5.5 W, 20 Hz with 100 mJ energy,²⁶ and the surface area which was illuminated by the laser is 64 mm²

Group V: The specimen's surfaces of this group were subjected to a selective infiltration etching (SIE) technique (5). After sintering, the surfaces of the specimens were abraded by a sequence of grit papers #200–800. A thin layer of low fusing melting glass was applied on the zirconia surface. The specimens were then heated to 750°C for 2 minutes, cooled to 650°C for 1 minute, reheated to 750°C for an additional 1 minute, and then cooled to room temperature. The specimens were immersed in a bath of 9% hydrofluoric acid for 20 minutes, and then every specimen was subjected to a high stream of air and water for 2 minutes.

All specimens were cleaned using an ultrasonic bath of isopropanol for 10 minutes and left to dry at room temperature for 24 hours before bonding. Fifty-five specimens were used for microstructural analysis, and the remaining were used for shear bond testing.

Microstructural analysis

X-ray diffraction analysis

Fifteen specimens were used for XRD analysis, three specimens for each group. The surface of the specimens was evaluated using an XRD device (D8 Focus, Bruker ASX, Karlsruhe, Germany). The surfaces were scanned from 5 to 80 using a 2 θ diffractometer and copper X-unit (Cu-K α radiation) 0.02° step scan, at a 2-second step interval. X-ray diffraction was used to determine phase composition. The calculation of monoclinic phase fraction (X_m) was based on Gravies and

Nicholson's²⁷ method, using the maximum intensities of the reflections:

$$X_m = \frac{I_m(-111) + I_m(111)}{I_m(-111) + I_m(111) + I_t(111)}$$

where X_m is the mass fraction of monoclinic phase, $I_m(-111)$ and $I_m(111)$ are the intensities of monoclinic peak at 28.2° 2 θ and 31.2° 2 θ , $I_t(111)$ is the intensity of tetragonal peak at 30° 2 θ . The monoclinic phase volume percentage (V_m) was calculated using a formula by Toraya et al:²⁸

$$V_m = 1.311X_m / (1 + 0.311X_m)$$

Crystallite size analysis was calculated using the peak broadening of XRD reflection of t (111) at 30° 2 θ using the following formula:²⁹

$$X_s = 0.9\lambda / (\text{FWHM} \times \cos\theta)$$

Where X_s is the crystallite size in nanometers; λ is the wavelength of the X-ray beam in nanometers ($\lambda=0.15406$ nm for standard detectors), and FWHM is the full width at half maximum height.

Atomic force microscopy

A total of 10 specimens, two for each group, were used for surface analysis using an atomic force microscope (Agilent 5420 SPM/AFM, Agilent Technologies, Santa Clara, CA, USA). Analysis was performed in contact mode to detect and observe morphological changes on the zirconia surface due to the different surface treatment methods.

Profilometer

A total of 15 specimens were used for surface roughness (R_a) analysis using a Profilometer (Dailyaid DR 300, Beijing, China). Three specimens for each group were

used. Four lines were drawn on each specimen with a space of 1.5 mm between them.

The stylus probe with diamond, 90 cone angle, and 5 μm tip radius passed along the lines with a traveling distance of 2.5 mm and a sliding speed of 0.135 mm/s. Each specimen was measured four times, and the mean value was calculated.

Scanning electron microscopy (SEM) and surface elemental analysis (EDX)

Three specimens from each group were gold sputtered (Sputter Coater 108 Auto, Cressington Scientific Instruments, Watford, UK) and examined using SEM (AIS2100C, SeronTechnologies, ASI2100, Gyeonggi-Do, Korea) at 1000x to 3000x magnification and 20 kV. EDX analysis was also performed (AMETEK with EDAX detector). The same specimens were used for EDX analysis.

Shear bond strength of resin cement

A total of 50 composite (Filtek Z 250, 3M ESPE) cylinders (4 mm diameter and 4 mm height) were constructed using a Plexiglas mold. One drop of primer (Clearfil ceramic primer; Kuraray Dental, Tokyo, Japan) was applied onto the zirconia surface with a disposable micro brush, dispersed by airflow for 3 seconds and left to react for 20 seconds. The cement (Panavia F2.0; Kuraray Dental) applied through the mixing tip onto the primed surface and the prepared composite cylinders were bonded under a fixed load of 450 g. The excess cement was removed by a curette and micro brush. The bonded samples were cured using a light curing machine (Elipar Free Light 2 LED, 3M-Espe, wave length=430–480 nm, light intensity=1,000 Mw/cm^2 , Saint Paul, MN, USA). Curing was done at the interface area for 40 seconds from three different directions. The bonded specimens were stored in distilled water for 24 hours at 37°C.

A shear bond test was conducted to evaluate the bond interface using a Universal testing machine (YL-UTM Main, YLE GmbH). A uni-bevel semi-circle chisel-shaped indenter was used to direct the shear force as close to the zirconia composite interface at a crosshead speed of 1 mm/minute until failure occurred. The load was recorded in Newtons and converted to MPa by dividing it by the surface area.

Statistical analysis

The data were analyzed using a statistical software package (SPSS version 23, Armonk, NY, USA). Normality distribution of the specimens for the shear bond groups was done using Kolmogorov-Smirnov test, which showed that the data followed a normally distributed ($P>0.05$). One-way analysis of variance (ANOVA) was conducted to evaluate the null hypothesis (SBS), followed by the Tukey *post hoc* tests for multiple comparisons. The level of significance was set to $P\leq 0.05$. The statistical difference between groups (phase transformation, crystallite size, and surface roughness) was tested using nonparametric statistics, as the measured quantitative variable isn't normally distributed. Kruskal-Wallis test was used to compare between more than two groups and the Mann Whitney test to compare between each two groups. P -values ≤ 0.05 were considered statistically significant.

Results

X-ray diffraction analysis

The mean value of $X_m\%$ of all groups is reported in Table 2. All groups reported a significant difference with the control group. The highest significant X_m value was reported in Group III (13%), followed by Groups II (8%), IV (4%), and V (3%). The lowest X_m value was for the control group (Table 2).

The mean crystallite size of the control group was 30.7 nm. Groups II and III showed a significant decrease in the crystallite size with all other groups. Group III showed a lower significant decrease in crystallite size when compared to group II (Table 2).

The XRD analysis of groups II and III showed asymmetrical broadening and decreased intensities of $t(111)$ peaks, and reversed intensities of the tetragonal doublets at $t(002)$ and $t(200)$ (Figure 1).

Surface roughness

Table 2 shows the surface roughness values of the studied groups. The R_a value (in μm) was chosen as a surface roughness indicator. The lower mean R_a value was for the control group V (1.84 μm) with lower significance with Groups, II, III, IV, and V. No statistically significant difference exists between Groups, II, III, IV, and V.

Table 2 Mean values (SD) of shear bond strength, surface roughness, and mass fraction of monoclinic phase, crystallite size, and full width at half maximum

Groups	Shear bond strength, MPa	Surface roughness, Ra μm	Xm %	AV Crystallite size, nm t(101)	FWHM, t(101)
I	10.48 ^{I,III,IV,V} \pm 1.80	1.84 ^{I,III,IV,V} \pm 0.19	0 ^{I,III,IV}	30.40 ^{I,III} \pm 0.01	0.28
II	16.21 ^I \pm 3.70	4.26 ^I \pm 0.79	8.00 ^{I,III,IV,V} \pm 0.01	19.28 ^{I,III,IV,V} \pm 0.01	0.46
III	15.70 ^I \pm 2.90	5.12 ^I \pm 0.22	13.00 ^{I, II,IV,V} \pm 0.02	12.52 ^{I,III,IV,V} \pm 0.02	0.67
IV	14.80 ^I \pm 3.40	4.81 ^I \pm 0.28	4.00 ^{I,III,III} \pm 0.01	34.90 ^{I,III} \pm 0.07	0.26
V	16.80 ^I \pm 3.00	5.02 ^I \pm 0.42	3.00 ^{I,III,III} \pm 0.01	29.50 ^{I,III} \pm 0.01	0.37

Note: Similar superscripts (I-V) indicate significant differences.

Abbreviation: FWHM, full width at half maximum height.

Scanning electron microscopy, surface elemental analysis, and atomic force microscopy

SEM images of group III show a surface with larger pits and grooves and sharp edges, whereas these grooves are smaller in Group II, but also with sharp edges. Scratches as a result of grit paper polishing appeared in Groups I and V. The difference in the surface texture between the control group and Group IV is not obvious (Figure 2). Impacted alumina particles appeared in Groups II and III, but with a higher percentage in Group II, as shown in the EDX analysis (Figure 3).

AFM images of Groups II and III show a destructive surface with small grain and barely visible grain boundary, whereas the surface of the control group and Group V appeared with larger and clear grain boundaries. An AFM image of Group IV shows some areas with destructive grains similar to Group II, and other areas with intact texture similar to the control group (Figure 4).

Shear bond test

The mean value of shear bond strength of the tested groups is shown in Table 2.

Group V shows the highest shear bond value, followed by Groups II, III, and IV. All groups showed a higher significant shear bond value than the control, but no significant difference exists between them.

Discussion

The results of this laboratory study led to the rejection of the hypothesis tested that the extent of tetragonal to monoclinic phase transformation, surface roughness, and bond strength showed a difference with different surface treatments performed.

Grit-blasting has been reported to be a prerequisite for improving surface roughness and to create a micromechanical

bonding area for resin cement.^{30,31} Many studies^{32,33} have stated that the t-m phase transformation is increased with the increase of particle size. Hallmann et al³⁴ concluded that there was a 6.75% t-m phase transformation for zirconia abraded with 110 μm alumina particles under 3.5 bar pressure, and, on the other hand, 4.72% for zirconia abraded with 50 μm under the same pressure.

The results of the present study suggest that the increase in abrasive particle size is directly related to t-m phase transformation, since 50 μm and 110 μm abrasive particles induced 8% and 13% t-m phase transformation, respectively, with a significant difference between them and with the control group. The present results are in accordance with many reported studies^{11,14,20} that concluded that the Xm percentage is increased with larger particle size.

On the contrary, Chintapalli et al³⁵ found that 12% and 15% monoclinic phases were found following sandblasting, irrespective of the size and pressure, and the changes in size and pressure have little effect on the phase transformation due to erosion of the material as well, Özcan et al³⁶ suggested that the increase in t-m is not related to the increase in particle size

The Er,Cr:YSGG laser is a useful tool because it increases zirconia surface roughness and, thus, enhances the wettability for better adhesion to resin cement.³⁷ It was used with a different power setting without graphite coating to minimize the absorption energy in order to achieve a rough zirconia surface free of crack and with minimum t-m phase transformation. The use of laser application to all samples was standardized by using a custom-made computerized robot to avoid human error during the irradiation.²⁵

SEM observations of Group IV showed a non-destructive, non-smooth surface that is free of cracks, but the grains in small areas were melted due to the effect of laser ablation.

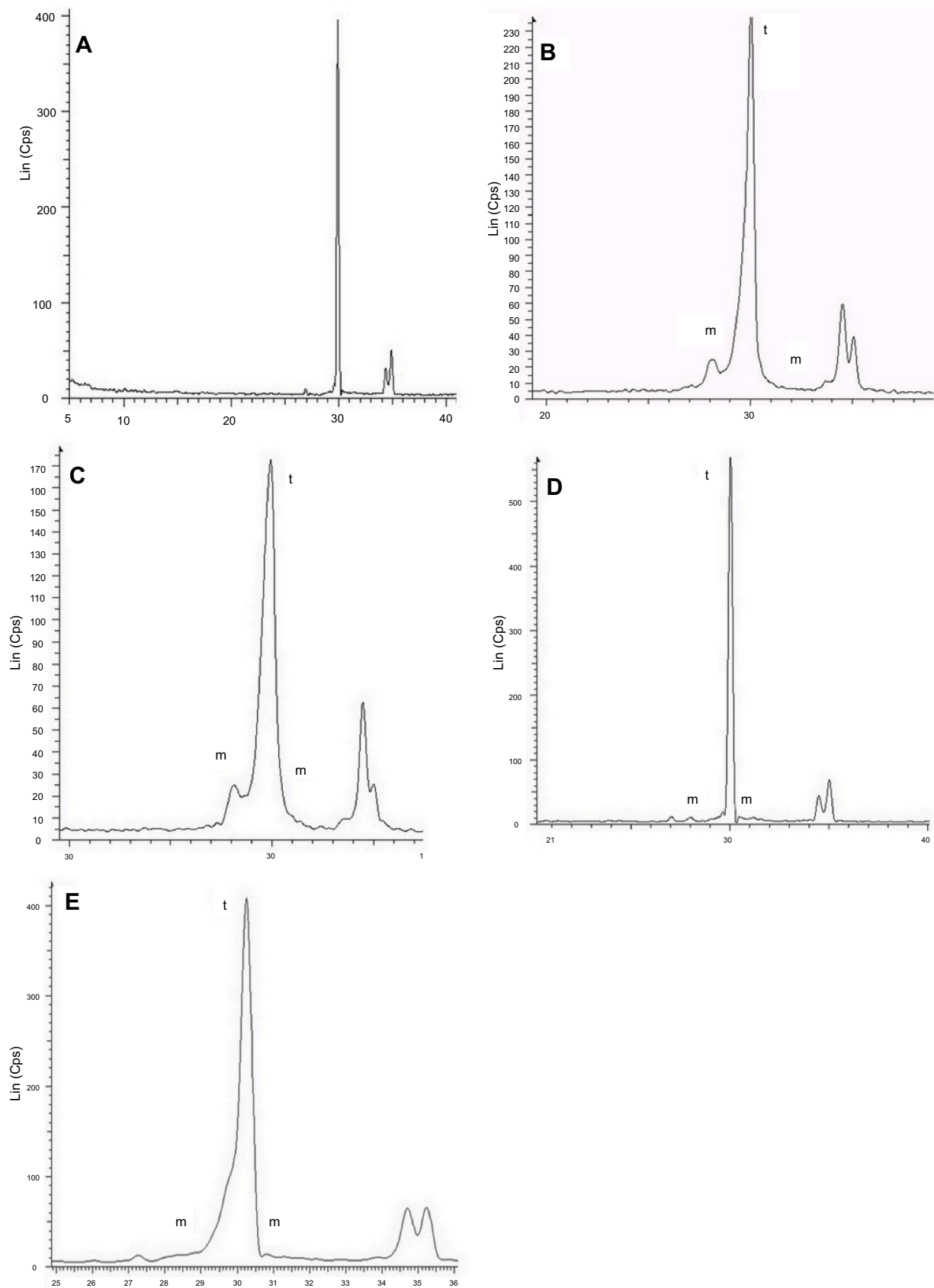


Figure 1 XRD analysis of Groups I (A), II (B), III (C), IV (D), and V (E). Groups II and III show humps on the left shoulder, decreased intensities and asymmetrical broadening of the t (111) peaks, as well as reversed intensities of the tetragonal doublets at t (002) and t (200). Group IV shows only a monoclinic peak, whereas Group V shows a hump on the left shoulder and less asymmetrical broadening than Groups II and III, but with no decreased intensity of the t (111) peak. Equal intensities of the tetragonal doublets at t (002) and t (200) in Group V.

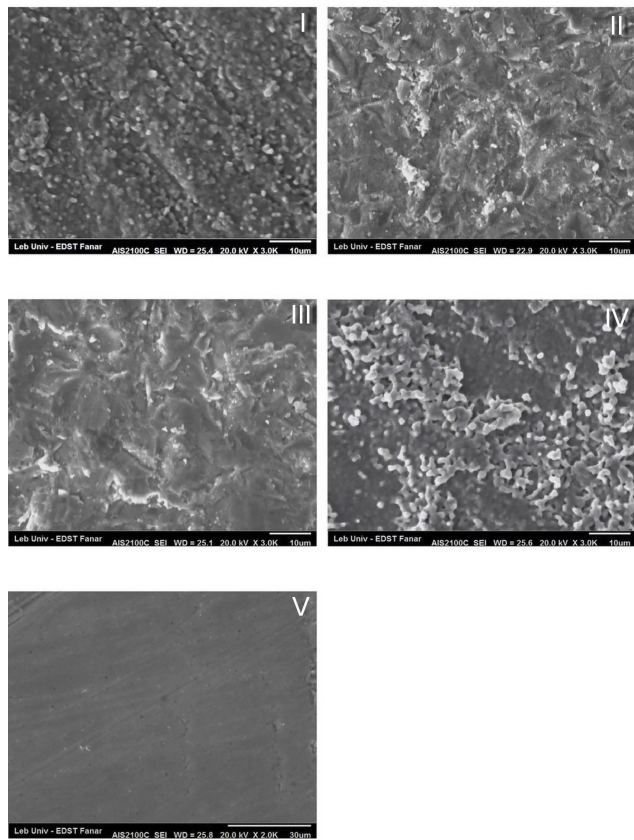


Figure 2 SEM analysis of Groups I, II, III, IV, and V. Group III appeared with deep grooves and pits with sharp edges. Group II shows a less destructive surface than Group III. Group IV acts as the control. Group V shows the indentation of grit paper.

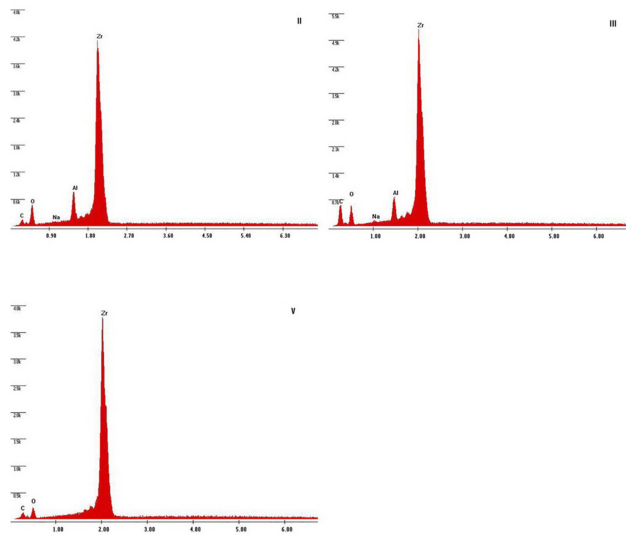


Figure 3 EDX analysis of Groups II, III, and V. EDX analysis of Groups II and III shows the impact of Al_2O_3 particles. In Group V, no silica was retained on SIE surface.

Graphite that is not used before laser treatment could be the reason for the decrease in energy discharge on the zirconia surface, and therefore decrease the destructive effect of the

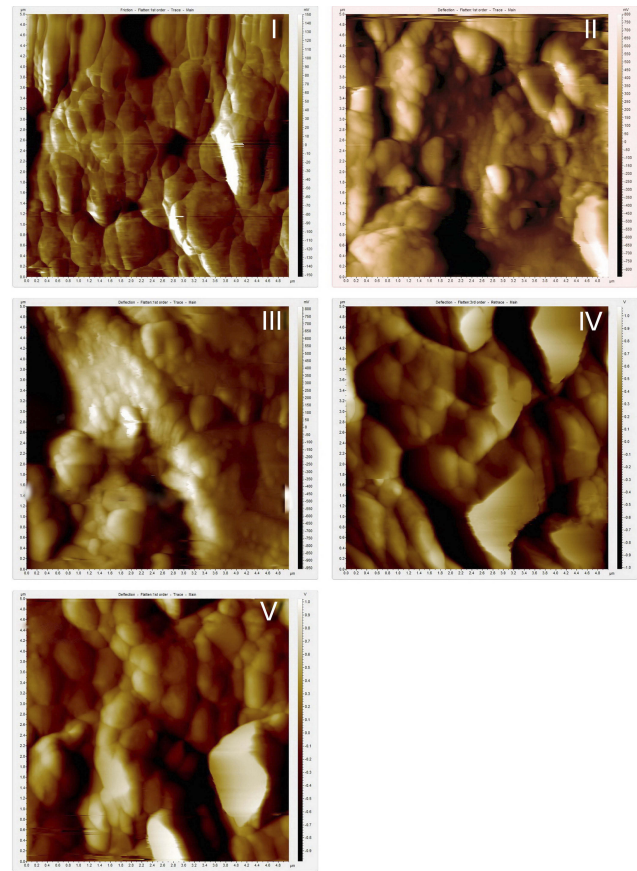


Figure 4 AFM analysis of Groups I, II, III, IV, and V. The grain boundaries are clearly visible in groups I, IV, and V, whereas they were lost in Groups II and III.

laser. Another reason might be the choice of laser energy (5.5 W), which was based on the pilot evaluation done before the performance of this work.

This laboratory study is in agreement with the one published by Sopher et al³⁸ reporting that the use of laser surface treatment by using graphite coating to enhance laser absorption, creating a damaged surface with severe micro-cracks as a result of energy discharge. The study of Stubinger et al³⁹ reported that SEM analysis of Er:YAG and diode lasers caused no visible surface alteration as compared to untreated surfaces, and undesirable effects were noted on zirconia when the CO_2 laser was applied, with severe melting and cracking.

The laser treatment induced a significant increase of $X_m\%$ (4%) with the control group. However, when the $X_m\%$ (4%) of the laser group was compared to the $X_m\%$ of the grit-blasted groups 50 μm (8%) and 110 μm (13%), and to the SIE group (3%), the statistical analysis showed a lower significant $X_m\%$ with the grit-blasted groups and no statistical significance with the SIE group.

The XRD analysis of the studied groups shows a decrease of the intensities of the $t(111)$ peak of groups abraded with 110 μm and 50 μm Al_2O_3 particles. However, the intensities of $t(111)$ peak of control, laser and SIE groups were not decreased, since the surface of those groups are free of residual compressive stress.⁴⁰

Moreover, the X-ray diffraction analysis of the studied groups shows asymmetrical broadening of $t(111)$ peak and an increase of FWHM of AL 50 μm and AL 100 μm and the SIE groups. Because the same pressure, time, and distance were used in Groups II and III, AL 50 and AL 100, it appears that the particle size is the decisive factor, but the laser group behaved like the control group.

As well as the reverse intensities of tetragonal doublets, $t(002)$ and $t(200)$ were only observed in Groups II and III, and to a lesser extent in the SIE group. These observations were related to residual compressive stresses due to the type and size of abrasive particles. Given that, other factors that contribute to this broadening are the cubic phase at $c(111)$ in the place of the most intense peak $t(111)$ and the grains which broke under stress that may exist in the upper surface layer.^{40,41,42}

On the other hand, Moon et al³¹ observed that, when an abrasive particle is pressed against the surface of the monolithic zirconia specimen, a contact stress field is generated.

This may suggest that the parameters used in the laser group did not lead to a surface with residual compressive stress, which is confirmed by SEM image of group V that shows a surface topography similar to the control group, and the AFM images of groups II and III that show a surface lost their grain boundaries.

Ghasemi et al⁴³ studied and suggested that the use of 3 W power on a zirconia surface enhances the bond strength, but not the surface roughness. Some others⁴⁴ have concluded that a CO_2 laser at 4 W and an Er,Cr:YSGG laser at only 3 W output power could be regarded as surface treatment options for roughening the zirconia surface.

The surface roughness of Groups III and IV showed a significant increase of the R_a value with control, whereas Group V showed a significant decrease of R_a value with the control group.

Group II showed no significant increase of the R_a value with the control group and a significant decrease with Group III. The reason behind the lower R_a value of Group II could be due to the grit-blasting size, time, and/or pressure, which was only enough to abrade the prominent grains on zirconia surface as a result of sintering

process. Whereas grit-blasting with larger Al_2O_3 particles in Group III resulted in a surface with big grooves and pits.

The present results accord with a previous study⁴⁵ that concluded that grit-blasting with larger Al_2O_3 particle size and time (250 μm for 30 seconds) resulted in an increase of surface roughness when compared with grit-blasting with a smaller particle size (30 μm , 50 μm , and 110 μm). Given this, some others^{34,46,47} have found that the extent of morphological changes on the zirconia surface depends on the particle sizes and blasting pressure.

Therefore, we can state that the two responsible factors for the increase in the R_a value in Group III are the abrasive grain size and the pressure. Moreover, because the pressure and time used in Groups II and III are the same, we can also state that the time is another responsible factor for increasing surface roughness.

The R_a value of Group IV was significantly higher than all other groups. The SEM evaluation of Group IV showed a surface that is approximately similar to the control group, and is free of cracks. In the present study the use of laser energy density of 5.5 W for 2 minutes was based on a pilot evaluation.⁴⁸ It shows that the laser energy density of 6 W was destructive, and the laser energy density of 5 W did not change the surface roughness value.

Our results are in accordance with a previous study,⁴⁴ which used a Er,Cr:YSGG laser with a laser power of 2 and 3 W. It was found that, in laser-treated groups, the surface roughness was much lower than compared with the other groups. However, it was not in agreement with Kirmali et al,⁴⁸ who used Er,Cr:YSGG laser irradiation with different energy intensities (1–6 W) and who found no significant difference of surface roughness between all the intensities that were used. However, the time that was used in their study (20 seconds) could not have been enough to increase the surface roughness.

The lower significance of the R_a value of Group V with all other groups might be due to the effect of polishing by grit papers before the application of a glass layer.⁵

Several studies reported that the abrasive grain size (25 μm , 50 μm , or 110 μm) has no effect on micromechanical retention, despite the difference in surface roughness created.^{46–49} On the other hand, some others have observed enhancement of adhesion strength with resin cement, leading to a smoother surface produced after air abrasion with 50 μm Al_2O_3 particles.^{51,52}

In the present study all study groups showed a significant increase in bond strength when compared to the

control group, despite having differences in surface roughness values, but there was no significant difference of shear bond strength value between them. It appeared from those results that the surface roughness is not the only factor affecting the increase in adhesion strength, despite it enhancing the surface for better wettability and increasing the bonding surface area.

The use of Clearfil™ ceramic primer that contains the MDP monomer with Panavia™ resin composite cement aimed to increase the chemical interaction of 10-MDP with the zirconia surface. A previous study⁵³ reported that, even if the resin cement includes MDP, its functional monomer properties in terms of the amount and flow seemed insufficient to increase the Y-TZP adhesion without any pretreatment.

Chen et al⁵⁴ observed that there was a direct chemical bond between the phosphate ester group and the oxides on the zirconia surface, and Nagaoka et al⁵⁵ found that adhesion between 10-MDP and zirconia was not only ionic bonding, but also hydrogen bonding. Inokoshi et al¹⁹ concluded that the combination of mechanical and chemical pre-treatment appeared particularly crucial to obtain durable bonding to zirconia ceramics, and a recent study from Skienhe et al⁴⁰ concluded that the combination of micromechanical and chemical surface treatment is a prerequisite for increasing the adhesion with zirconia ceramics. A previous study concluded that a reliable and durable resin zirconia bonding is vital for the longevity of dental restoration.⁵⁶

Therefore, the second factor that increases the adhesion strength significantly is the adhesive system used. Given this, our results are in agreement with many studies showing that the primer that contain MDP monomer should be used with resin cement, even if it contains this monomer.^{57–59}

In contrast, Cavalcanti et al⁶⁰ claimed that sandblasting appears to be a more efficient method to modify zirconia surfaces compared with laser irradiation, and the use of MDP-containing primers improved bond strength without previous mechanical or laser surface treatment.

Clinically speaking, the success of an adhesive bond to zirconia depends on different factors. One of the factors that leads to the loss of primary stability of zirconia to resin cement is the transformation from the tetragonal into the monoclinic phase due to the increase in temperature and the presence of moisture.^{61,62} Moreover, the crack growth by the degradation mechanism of zirconia in water has a direct association with the failure of restorations.^{20,21}

In contrast, Amaral et al⁶³ reported that any amount of monoclinic phase due to grit-blasting apparently hindered the progression of low temperature degradation, and others stated that the transformation toughening as a result of t-m phase transformation may decrease the detrimental effects of aging on the specimens,^{18,19}

We have used the shear bond strength test for adhesion strength measurement because it is simple and less technique-sensitive, but it has some shortcomings in which the stresses are not homogeneous across the interface.^{64,65} Despite that, it can be described as a practical measurement to test the bond strength of cements to hard materials such as ceramics.

The different published results regarding zirconia surfaces can be attributed to many variables, such as the different laser settings and types, different cements, and different abrasive parameters or varying methodology used.^{16,24}

The use of Er,Cr:YSGG and grit-blasting appeared to be a surface treatment method that enhanced the adhesion strength of MDP containing resin composite cement to zirconia.

Conclusions

The following conclusions can be drawn:

1. The t-m phase transformation is directly related to abrasive particles size.
2. Grit-blasting with 50 μm Al_2O_3 induced a lower t-m phase transformation than 100 μm and it seems to be a feasible surface treatment method.
3. The use of a Er,Cr:YSGG laser for zirconia surface treatment with adjusted parameters appeared to be useful as a non-destructive surface treatment method.
4. The use of MDP-containing primers with resin composite cement containing the MDP monomer is required to enhance the bonding efficiency.

Disclosure

The authors report no conflicts of interest in this work.

References

1. Li RW, Chow TW, Matinlinna JP. Ceramic dental biomaterials and CAD/CAM technology: state of the art. *J Prosthodont Res.* 2014;58(4):208–216. doi:10.1016/j.jpor.2014.07.003
2. Miyazaki T, Nakamura T, Matsumura H, Ban S, Kobayashi T. Current status of zirconia restoration. *J Prosthodont Res.* 2013;57(4):236–261. doi:10.1016/j.jpor.2013.09.001

3. Raigrodski AJ, Hillstead MB, Meng GK, Chung KH. Survival and complication of zirconia-based fixed dental prostheses. *J Prosthet Dent.* 2012;107(3):170–177. doi:10.1016/S0022-3913(12)60051-1
4. Özcan M, Bernasconi M. Adhesion to zirconia used for dental restorations: a systematic review and meta-analysis. *J Adhes Dent.* 2015;17(1):7–26.
5. Aboushelb MN, Kleverlaan CJ, Feilzer AJ. Selective infiltration etching for a strong and a durable bonding with zirconia-based restorations. *J Prosthet Dent.* 2007;98(5):379–388. doi:10.1016/S0022-3913(07)60123-1
6. Liu D, Matinlinna JP, Tsoi JK, et al. A new modified laser pretreatment for porcelain zirconia bonding. *Dent Mater.* 2013;29(5):559–565. doi:10.1016/j.dental.2013.03.002
7. Özcan M, Raadschelders J, Vallittu P, et al. Effect of particle deposition parameters on silica-coating of zirconia using a chairside air-abrasion device. *J Adhes Dent.* 2013;15(3):211–214. doi:10.3290/j.jad.a29536
8. May LG, Passos SP, Capelli DB, Özcan M, Bottino MA, Valandro LF. Effect of silica coating combined to a MDP-based primer on the resin bond to Y-TZP ceramic. *J Biomed Mater Res B.* 2010;95B:69–74. doi:10.1002/jbm.b.31684
9. Lung CYK, Matinlinna JP. Aspects of silane coupling agents and surface conditioning in dentistry: an overview. *Dent Mater.* 2012;28(5):467–477. doi:10.1016/j.dental.2012.02.009
10. Matinlinna JP, Lung CYK, Tsoi JKH. Silane adhesion mechanism in dental applications and surface treatments: a review. *Dent Mater.* 2018;34(1):13–28. doi:10.1016/j.dental.2017.09.002
11. Inokoshi M, De Munck J, Minakuchi S, Van Meerbeek B. Meta-analysis of bonding effectiveness to zirconia ceramics. *J Dent Res.* 2014;93(4):329–334. doi:10.1177/0022034514524228
12. Lung CY, Botelho MG, Heinonen M, Matinlinna JP. Resin zirconia bonding promotion with some novel coupling agents. *Dent Mater.* 2012;28(8):863–872. doi:10.1016/j.dental.2012.04.023
13. Ahn JS, Yi YA, Lee Y, Seo DG. Shear bond strength of MDP-containing self-adhesive resin cement and Y-TZP ceramics: effect of phosphate monomer-containing primers. *Biomed Res Int.* 2015. doi:10.1155
14. Pott PC, Stiesch M, Eisenburger M. Influence of 10-MDP adhesive system on shear bond strength of zirconia-composite interfaces. *J Dent Mater Tec.* 2015;4(3):117–126.
15. Pott PC, Stiesch M, Eisenburger M. Influence of artificial aging on the shear bond strength of zirconia-composite interfaces after pretreatment with new 10-MDP adhesive systems. *J Dent Mater Tech.* 2016;5(1):1–9.
16. Aurelio IL, Marchionatti AME, Montagner AF, May LG, Soares FZM. “Does air particle abrasion affect the flexural strength and phase transformation of Y-TZP? A systematic review and meta-analysis. *Dent Mater.* 2016;32(6):827–845. doi:10.1016/j.dental.2016.05.005
17. Amaral M, Cesar P, Lohbauer U, Valandro L. Fatigue behavior of Y-TZP ceramic after surface treatments. *J Mech Behav Biomed Mater.* 2016;57:149–156. doi:10.1016/j.jmbbm.2015.11.042
18. Kim J-W, Covell NS, Guess PC, Rekow ED, Zhang Y. Concerns of hydrothermal degradation in CAD/CAM Zirconia. *J Dent Res.* 2010;89(1):91–95. doi:10.1177/0022034510366903
19. Inokoshi M, Vanmeensel K, Zhang F, et al. Aging resistance of surface-treated dental zirconia. *Dent Mater.* 2015;31(2):182–194. doi:10.1016/j.dental.2014.11.018
20. Denry I, Kelly JR. State of the art of zirconia for dental applications. *Dent Mater.* 2008;24(3):299–307. doi:10.1016/j.dental.2007.05.007
21. Chevalier J. What future for zirconia as a biomaterial? *Biomaterials.* 2006;27(4):535–543. doi:10.1016/j.biomaterials.2005.07.034
22. El Gamal A, Medioni E, Rocca JP, Fornaini C, Muhammad OH, Brulat-Bouchard N. Shear bond, wettability and AFM evaluations on CO₂ laser-irradiated CAD/CAM ceramic surfaces. *Lasers Med Sci.* 2017;23(4):779–785. doi:10.1007/s10103-017-2171-4
23. Paranhos MP, Burnett LH Jr, Magne P. Effect Of Nd: YAGlaser and CO₂ laser treatment on the resin bond strength to zirconia ceramic. *Quintessence Int.* 2011;42(1):79–89.
24. GarcõÁa-Sanz V, Paredes-Gallardo V, Mendoza-Yero O, et al. The effects of lasers on bond strength to ceramic materials: a systematic review and meta-analysis. *PLoS One.* 2018;13:e0190736. doi:10.1371/journal.pone.0190736
25. Cristoforides P, Amaral R, May LG, Bottino MA, Valandro LF. Composite resin to yttria stabilized tetragonal zirconia polycrystal bonding: comparison of repair methods. *Oper Dent.* 2012;37:263–271. doi:10.2341/11-193-L
26. Nahas P, Zeinoun T, Namour M, Ayach T, Nammour S. Effect of Er: YAGlaser energy densities on thermally affected dentin layer: morphological study. *Laser Ther.* 2018;27(2):91–97. doi:10.5978/islsm.18-OR-07
27. Garvie RC, Nicholson PS. Phase analysis in zirconia systems. *J Am Ceram Soc.* 1972;55(6):303–305. doi:10.1111/jace.1972.55.issue-6
28. Toraya H, Masahiro M, Somiya S. Calibration curve for quantitative analysis of the monoclinic-tetragonal ZrO₂ system by X-ray diffraction. *J Am Ceram Soc.* 1984;67(6):119–121.
29. Anstis GR, Chantikul P, Lawn BR, Marshall DB. A critical evaluation of indentation techniques for measuring fracture toughness: I, direct crack measurements. *J Am Ceram Soc.* 1981;64(9):533–538. doi:10.1111/jace.1981.64.issue-9
30. Kosmac T, Oblak C, Jevnikar P, Funduk N, Marion L. The effect of surface grinding and sandblasting on flexural strength and reliability of Y-TZP zirconia ceramic. *Dent Mater.* 1999;15(6):426–433. doi:10.1016/S0109-5641(99)00070-6
31. Özcan M, Vallittu PK. Effect of surface conditioning methods on the bond strength of luting cement to ceramics. *Dent Mater.* 2003;19(8):725–731. doi:10.1016/S0109-5641(03)00019-8
32. Moon JE, Kim SH, Lee JB, Han JS, Yeo IS, Ha SR. Effects of airborne particle abrasion protocol choice on the surface characteristics of monolithic zirconia materials and the shear bond strength of resin cement. *Ceram Int.* 2016;42(1):1552–1562. doi:10.1016/j.ceramint.2015.09.104
33. Zhang Y, Lawn BR, Malament KA, Van Thompson P, Rekow ED. Damage accumulation and fatigue life of particle-abraded ceramics. *Int J Prosthodont.* 2006;19(5):442–448.
34. Hallmann L, Ulmer P, Reusser E, Hämmerle CHF. Effect of blasting pressure, abrasive particle size and grade on phase transformation and morphological change of dental zirconia surface. *Surf Coat Tech.* 2012;206(19–20):4293–4302. doi:10.1016/j.surfcoat.2012.04.043
35. Chintapalli RK, Marro FG, Jimenez-Pique E, Anglada M. Phase transformation and subsurface damage in 3YTZP after sandblasting. *Dent Mater.* 2013;29(5):566–572. doi:10.1016/j.dental.2013.03.005
36. Özcan M, Melo RM, Souza RO, Machado JP, Felipe VL, Bottino MA. Effect of air-particle abrasion protocols on the biaxial flexural strength, surface characteristics and phase transformation of zirconia after cyclic loading. *J Mech Behav Biomed Mater.* 2013;20:19–28. doi:10.1016/j.jmbbm.2013.01.005
37. Hao L, Lawrence J. Effects of Nd: yAGlaser treatment on the wettability characteristics of a zirconia-based bioceramic. *Opt Lasers Eng.* 2006;44(8):803–814. doi:10.1016/j.optlaseng.2005.08.001
38. Spohr A, Borges G, Burnett L, Goncalves E, Silva H. Surface modification of in-ceram zirconia ceramic by ND: YAG laser, rocatec system, or aluminum oxide sandblasting and its bond strength to a resin cement. *Photomed Laser Surg.* 2008;26(3):203–208. doi:10.1089/pho.2007.2130
39. Stubinger S, Homann F, Etter C, Miskiewicz M, Wieland M, Sader R. Effect of Er: YAG,CO₂ and diode laser irradiation on surface properties of zirconia endosseous dental implants. *Lasers Surg Med.* 2008;40(3):223–228. doi:10.1002/lsm.20614
40. Skienhe H, Habchi R, Ounsi H, Ferrari M, Salameh Z. Evaluation of the effect of different types of abrasive surface treatment before and after zirconia sintering on its structural composition and bond strength with resin cement. *Biomed Res Int.* 2018;2018:12 Article ID 1803425. doi:10.1155/2018/1803425.

41. Leng Y. *Materials Characterization: Introduction to Microscopic and Spectroscopic Methods*. Germany: Wiley; 2013.
42. Kontoyannis CG, Orkoulou M. Quantitative determination of the cubic, tetragonal and monoclinic phases in partially stabilized zirconia by Raman spectroscopy. *J Mater Sci*. 1994;29(20):5316–5320. doi:10.1007/BF01171541
43. Ghasemi A, Kermanshah H, Ghavam M, et al. Effect of Er, Cr: YSGG laser treatment on microshear bond strength of zirconia to resin cement before and after sintering. *J Adhes Dent*. 2014;16(4):377–382. doi:10.3290/jjad.a32444
44. Akhavan Zanjani V, Ahmadi H, Nateghifard A, et al. Effect of different laser surface treatment on microshear bond strength between zirconia ceramic and resin cement. *J Investig Clin Dent*. 2015;6(4):294–300. doi:10.1111/jicd.12105
45. Turp V, Sen D, Tuncelli B, Goller G, Ozcan M. Evaluation of air-particle abrasion of Y-TZP with different particles using microstructural analysis. *Aust Dent J*. 2013;58(2):183–191. doi:10.1111/adj.12065
46. Gomes AL, Castillo OR, Lynch CD, Montero J, Albaladejo A. Influence of sandblasting granulometry and resin cement composition on microtensile bond strength to zirconia ceramic for dental prosthetic frameworks. *J Dent*. 2013;41(1):31–41. doi:10.1016/j.jdent.2012.09.013
47. Hallmann L, Ulmer P, Lehmann F, et al. Effect of surface modifications on the bond strength of zirconia ceramic with resin cement. *Dent Mater*. 2016;32(5):631–639. doi:10.1016/j.dental.2016.02.001
48. Kirmali O, Kustarci A, Kapdan A, Er K. Efficacy of surface roughness and bond strength of Y-TZP zirconia after various Pre-Treatments. *Photomed Laser Surg*. 2015;33(1):15–21. doi:10.1089/pho.2014.3825
49. Tzanakakis EG, Zoutzas T, Koidis PT, Zoutzas T, Koidis PT. Is there a potential for durable bond to zirconia restoration? A systematic review. *J Prosthet Dent*. 2016;115(1):9–19. doi:10.1016/j.prosdent.2015.09.020
50. Ozcan M, Nijhuis H, Valandro LF. Effect of various surface conditioning methods on the adhesion of dual-cure resin cement with MDP functional monomer to zirconia after thermal aging. *Dent Mater*. 2008;27(1):99–104. doi:10.4012/dmj.27.99
51. Blatz MB, Phark J-H, Ozer F, et al. In vitro comparative bond strength of contemporary self-adhesive resin cements to zirconium oxide ceramic with and without air-particle abrasion. *Clin Oral Investig*. 2010;14(2):187–192. doi:10.1007/s00784-009-0278-0
52. Xie ZG, Meng XF, Xu LN, Yoshida K, Luo XP, Gu N. Effect of air abrasion and dye on the surface element ratio and resin bond of zirconia ceramic. *Biomed Mater*. 2011;6(6):1–7. doi:10.1088/1748-6041/6/6/065004
53. Yi YA, Ahn JS, Park YJ, et al. The effect of sandblasting and different primers on shear bond strength between Yttria tetragonal zirconia polycrystal ceramic and a self-adhesive resin cement. *Operat Dent*. 2015;40(1):63–71. doi:10.2341/13-149-L
54. Chen C, Xie H, Song X, Burrow MF, Chen G, Zhang F. Evaluation of a commercial primer for bonding of zirconia to two different resin composite cements. *J Adhes Dent*. 2014;16(2):169–176.
55. Nagaoka N, Yoshihara K, Feitosa VP, et al. Chemical interaction mechanism of 10-MDP with zirconia. *Sci Rep*. 2017;7. Article ID 45563. doi:10.1038/srep45563
56. Liu D, Pow EHN, Tsoi JKH, Matinlinna JP. Evaluation of four surface coating treatments for resin to zirconia bonding. *J Mechan Behav Biomed Mater*. 2014;32:300–309. doi:10.1016/j.jmbbm.2013.12.011
57. Shin YJ, Shin Y, Yi YA, et al. Evaluation of the shear bond strength of resin cement to Y-TZP ceramic after different surface treatments. *Scanning*. 2014;36(5):479–486. doi:10.1002/sca.21142
58. Koizumi H, Nakayama D, Komine F, Blatz MB, Matsumura H. Bonding of resin-based luting cements to zirconia with and without the use of ceramic priming agents. *J Adhes Dent*. 2012;14(4):385–392.
59. Nakayama D, Koizumi H, Komine F, Blatz MB, Tanoue N, Matsumura H. Adhesive bonding of zirconia with single liquid acidic primers and a tri-n-butylborane initiated acrylic resin. *J Adhes Dent*. 2010;12(4):305–310.
60. Cavalcanti AN, Foxton RM, Watson TF, Oliveira MT, Giannini M, Marchi GM. Bond strength of resin cements to a zirconia ceramic with different surface treatments. *Oper Dent*. 2009;34(3):280–287. doi:10.2341/08-80
61. Kawai Y, Uo M, Wang Y, Kono S, Ohnuki S, Watari F. Phase transformation of zirconia ceramics by hydrothermal degradation. *Dent Mater J*. 2011;30(3):286–292.
62. Nakamura T, Usami H, Ohnishi H, et al. The effect of adding silica to zirconia to counteract zirconia's tendency to degrade at low temperatures. *Dent Mater J*. 2011;30(3):330–335.
63. Amaral M, Valandro LF, Bottino MA, Souza RO. Low temperature degradation of a Y-TZP ceramic after surface treatments. *J Biomed Mater Res B Appl Biomater*. 2013;101(8):1387–1392. doi:10.1002/jbm.b.32957
64. Brag RR, Meira JB, Boaro LC, Xavier TA. Adhesion to tooth structures: a critical review of macro test methods. *Dent Mater*. 2010;26(2):38–49. doi:10.1016/j.dental.2009.11.150
65. Sirisha K, Rambabu T, Shankar YR, Ravikumar P. Validity of bond strength tests: a critical review: part I. *J Conserv Dent*. 2014;17(5):305. doi:10.4103/0972-0707.136340

Clinical, Cosmetic and Investigational Dentistry

Publish your work in this journal

Clinical, Cosmetic and Investigational Dentistry is an international, peer-reviewed, open access, online journal focusing on the latest clinical and experimental research in dentistry with specific emphasis on cosmetic interventions. Innovative developments in dental materials, techniques and devices that improve outcomes and patient

satisfaction and preference will be highlighted. The manuscript management system is completely online and includes a very quick and fair peer-review system, which is all easy to use. Visit <http://www.dovepress.com/testimonials.php> to read real quotes from published authors.

Submit your manuscript here: <https://www.dovepress.com/clinical-cosmetic-and-investigational-dentistry-journal>

Dovepress