

Long-term use of proton-pump inhibitors and risk of gastric cancer: a review of the current evidence

Ka Shing Cheung and Wai K. Leung

Ther Adv Gastroenterol

2019, Vol. 12: 1–11

DOI: 10.1177/
1756284819834511

© The Author(s), 2019.
Article reuse guidelines:
sagepub.com/journals-
permissions

Abstract: Gastric cancer remains one of the leading cancers in the world with a high mortality, particularly in East Asia. *Helicobacter pylori* infection accounts for the majority of the noncardia gastric cancers by triggering gastric inflammation and subsequent neoplastic progression. Eradication of *H. pylori* can reduce, but not totally eliminate, subsequent risk of developing gastric cancer. Proton-pump inhibitors (PPIs) are one of the most widely prescribed medications worldwide. With their profound gastric-acid suppression, there are concerns about a possible carcinogenic role in gastric cancer, due to induced hypergastrinemia, gastric atrophy and bacterial overgrowth in the stomach. While randomized clinical trials to establish causality between long-term PPI use and gastric cancer are lacking, current evidence based on observational studies suggests PPIs are associated with an increased gastric cancer risk. However, opinions on causality remain divergent due to unmeasured and possible residual confounding in various studies. Our recent study has showed that even after *H. pylori* eradication, long-term PPI use is still associated with an increased risk of gastric cancer by more than twofold. Hence, long-term PPIs should be used judiciously after considering individual's risk–benefit profile, particularly among those with history of *H. pylori* infection. Further well-designed prospective studies are warranted to confirm the potential role of PPIs in gastric cancer according to baseline gastric histology and its interaction with other chemopreventive agents like aspirin, statins and metformin.

Keywords: aspirin, enterochromaffin-like cells, gastrin, gastric adenocarcinoma, *Helicobacter pylori*, *H. pylori*, PPIs, stomach cancer

Received: 11 December 2018; revised manuscript accepted: 6 February 2019.

Introduction

Gastric cancer is the fifth commonest cancer and the third leading cause of cancer-related mortality worldwide.¹ In 2015, an estimated 1.3 million incident gastric cancer cases were diagnosed and there were 819,000 gastric-cancer-related deaths. *Helicobacter pylori* infection was classified by the World Health Organization (WHO) as a type I carcinogen in 1994.² Chronic *H. pylori* infection confers a more than threefold increase in risk of gastric cancer,³ which accounts for 78% of all gastric cancer cases and 89% of noncardia cancers.⁴ *H. pylori*-associated gastric carcinogenesis is generally believed to start from chronic gastritis, progressing

to atrophic gastritis, intestinal metaplasia, dysplasia, and ultimately cancer.⁵ Atrophic gastritis, intestinal metaplasia and dysplasia are therefore regarded as precancerous gastric lesions. In a prospective study, patients with corpus-predominant gastritis [relative risk (RR) 34.5; 95% confidence interval (CI) 7.1–166.7 versus antral-predominant gastritis], severe gastric atrophy (RR 4.9; 95% CI 2.8–19.2 versus absent/mild atrophy) and intestinal metaplasia (RR 6.4; 95% CI 2.6–16.1 versus absence of intestinal metaplasia) were all at higher risk of gastric cancer development.⁶ The magnitude of risk was confirmed in another cohort study [atrophic gastritis: hazard ratio (HR) 4.5; 95% CI

Correspondence to:

Wai K. Leung
Department of Medicine,
The University of Hong
Kong, Queen Mary
Hospital, 102 Pok Fu Lam
Road, Hong Kong
waikleung@hku.hk

Ka Shing Cheung
Department of Medicine,
The University of Hong
Kong, Hong Kong

3.5–5.8; intestinal metaplasia: HR 6.5; 95% CI 4.7–8.2; dysplasia: HR 10.9; 95% CI 7.7–15.4].⁷ In this regard, eradication of *H. pylori* has been shown to reduce the gastric cancer risk by 33–47%,^{8–10} but a considerable proportion of *H. pylori*-eradicated individuals still progress to develop gastric cancer.

Apart from chronic *H. pylori* infection, proton-pump-inhibitor (PPI) usage is another potential risk factor for the development of gastric atrophy. With the potent acid suppression, PPIs could induce changes in the gastric environment, including hypergastrinemia and enterochromaffin cells hyperplasia.¹¹ There is also evidence suggesting that PPIs could contribute to bacterial overgrowth in the stomach.¹² Intuitively, PPIs worsen gastric atrophy and hence could increase the risk of gastric cancer.¹⁰

In this review, we will examine the latest literature to decipher the role of PPIs in gastric cancer development, particularly in relation to *H. pylori* infection.

Potential carcinogenic mechanisms of proton-pump inhibitors

Proton-pump inhibitors (PPIs) have become one of the most commonly prescribed medications worldwide since their introduction in 1980s,¹³ and have been the cornerstone of the management of upper gastrointestinal diseases including peptic ulcer disease (PUD), *H. pylori* infection, dyspepsia, and gastroesophageal reflux disease (GERD). However, emerging data have shown that long-term PPIs are associated with a number of side effects, including bone fracture,¹⁴ *Clostridium difficile* infection,¹⁵ pneumonia,¹⁶ myocardial infarction and stroke,¹⁷ although a causality has not yet been confirmed.

Potent acid suppression has long been suspected a risk factor of gastric cancer by worsening gastric atrophy with ensuing hypergastrinemia and bacterial overgrowth in the stomach. Animal studies have shown that acid suppression by omeprazole¹⁸ and the insurmountable histamine-2 receptor antagonist (H2RA) loxidine¹⁹ induce gastric mucosa neoplasia in rodents. However, evidence on human subjects remains controversial. Herein, we summarize the postulated mechanisms underlying the carcinogenic effects of PPIs on gastric cancer development (Figure 1).

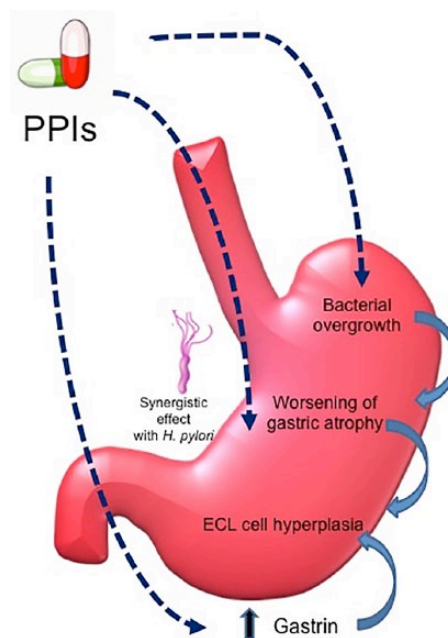


Figure 1. Postulated mechanisms underlying the carcinogenic effects of proton-pump inhibitors on gastric cancer development. ECL, enterochromaffin like; *H. pylori*, *Helicobacter pylori*; PPIs, proton-pump inhibitors.

Interaction with *Helicobacter pylori* infection

H. pylori typically colonizes the gastric antrum, and cause an antrum-predominant gastritis in most infected subjects.²⁰ Antral mucosal inflammation in turn stimulates gastric secretion, maintaining a normal- or high-acidic environment. However, when the acid production is suppressed by PPIs, the pattern of gastritis shifts to a corpus-predominant gastritis with resultant impairment of parietal cell function; a phenomenon that does not occur in *H. pylori*-negative patients.²¹ As such, the acid-suppressive effect of PPIs is further enhanced by *H. pylori*-induced corpus gastritis.^{22,23} In a cohort study of 177 patients, atrophic gastritis only developed in *H. pylori*-infected but not *H. pylori*-negative patients with long-term PPI use during a mean follow up of 5 years.²⁴ A systematic review also showed that the risk of corpus atrophy was more pronounced in *H. pylori*-infected than *H. pylori*-negative PPI users [odds ratio (OR) 11.45; 95% CI: 6.25–20.99].¹¹

Hypergastrinemia

In response to suppression of gastric-acid production by PPIs, there is a compensatory increase in gastrin production as a negative feedback.²⁵ A

recent systematic review by Lundell and colleagues¹¹ including 16 studies with 1920 patients showed that during long-term (>3 years) PPI use, the mean gastrin levels rose to one to three times the upper limit of normal. The progrowth effect of gastrin is suspected to play a role in gastric cancer development.^{26–28} Hypergastrinemia drives the hyperplasia of enterochromaffin-like (ECL) cells in the oxyntic mucosa, which occurs in 10–20% of patients with long-term PPI use.²⁹ It has been reported that the risk of ECL-cell hyperplasia is higher in *H. pylori*-infected than *H. pylori*-negative patients (OR 2.45; 95% CI 1.47–4.10).¹¹ Similar results were reported in two randomized clinical trials on acid reflux control by either antireflux surgery or long-term PPI therapy.³⁰ Analysis of the insulin–gastric (INS-GAS) transgenic mice raised the possibility that hypergastrinemia may promote gastric cancer through the gastrin receptor, cholecystikinin receptor-2 (CCK2R).³¹ With the overexpression of amidated gastrin through the insulin promoter upstream of the human gastrin coding sequences,³² these mice developed gastric intestinal metaplasia and dysplasia, and some even developed gastric corpus cancer,³³ which was accelerated by infection by *Helicobacter felis* or *H. pylori*. In another study, PPIs (omeprazole) led to a faster progression to dysplasia in *H. felis*-infected INS-GAS mice.³⁴

Furthermore, another study also suggested that promotion of growth of gastric carcinomas of ‘intestinal type’ might be due to the indirect effect of hypergastrinemia, *via* stimulation of the release of signal substances (e.g. histamine, regenerating-gene protein) from the ECL cells.³⁵ In line with these animal studies, clinical evidence from a case-control study nested within the all-male Alpha-Tocopherol, Beta-Carotene Cancer Prevention Study of 29,133 Finnish male smokers with more than 24 years of follow up, reported that a higher gastrin level (fourth quartile *versus* first quartile) was associated with an increased risk of noncardia gastric cancer (OR 1.92; 95% CI 1.21–3.05).³⁶

Although ECL cells are generally believed to play little role in human gastric carcinoma development, ECL-cell neuroendocrine tumors (NETs)³⁷ and adenocarcinomas³⁸ were observed in cases of pernicious anemia (autoimmune gastritis with corpus atrophy and thus low gastric-acid output). Early studies showed that the distinction between gastric NETs and adenocarcinomas may be

difficult in both animals³⁹ and humans,^{40,41} as ECL cells may lose many of their neuroendocrine characteristics during neoplastic transformation. However, some studies later suggested that a proportion of the gastric adenocarcinomas, in particular, the signet ring subgroup of gastric carcinomas of ‘diffuse type,’ indeed develop from the ECL cells.^{42–44} With improved sensitivity of immunohistochemical methods for detecting neuroendocrine/ECL-cell makers, it was shown in one study that virtually all gastric adenocarcinomas in patients with severe hypergastrinemia were malignant NETs.⁴⁵

Non-Helicobacter pylori bacterial overgrowth

Acid suppression of PPIs can lead to both luminal and mucosal non-*H. pylori* bacterial overgrowth in the stomach that may exacerbate chronic inflammation.¹² It has been shown that non-*H. pylori* bacterial overgrowth is a risk factor for atrophic gastritis (antrum: RR 5.07; 95% CI 1.05–24.40; corpus: RR 6.38; 95% CI 0.78–53.89).⁴⁶ The simultaneous infection with *H. pylori* and non-*H. pylori* bacteria has a synergistic effect on inducing a higher level of serum cytokines [interleukin (IL)-1 beta and IL-8] and increasing the risk of atrophic gastritis. Moreover, there is an increase in the number of bacteria including nongastric microorganisms (mainly from oral flora) that possess nitrate reductase to produce N-nitroso compounds from food nitrates, known gastric carcinogens.^{47,48} Interestingly, it has been shown that gastric microbiota alteration is distinct in atrophic gastritis.⁴⁹ PPI users showed similarly high gastric microbial diversity as healthy subjects. A relatively high gastric microbial diversity, dominated by streptococcus, was observed in autoimmune gastritis, while a decreased microbial abundance and diversity was induced by *H. pylori* infection.

Clinical studies on the association between proton-pump inhibitors and gastric cancer

The incidence of gastric cancer indeed has been gradually declining in the past 50 years with an average estimated annual percentage decrease of 2.5% per year.⁵⁰ This observation has therefore been used as an argument against the potential carcinogenic role of PPIs, which has been available only since 1989. However, it could not be over-emphasized that reduction in the prevalence of *H. pylori* and improvement in food processing

actually contribute to this observed decline in gastric cancer incidence,⁵¹ hence masking the possible effect of PPIs on increasing gastric cancer incidence.

As gastric cancer is a relatively rare disease which requires a long-time lag to develop, randomized clinical trials (RCTs) demonstrating the potential carcinogenic effects of PPIs are both resource and labor intensive. More importantly, there may be an ethical issue in randomizing patients to receive intervention to observe primary adverse outcome. As such, the determination of the causal relationship could, at best, be determined by well-designed observational studies controlling for known confounding factors, with minimization of biases.

There are two meta-analyses based on RCTs assessing precancerous gastric lesions and PPIs.^{52,53} Not surprisingly, no association between PPIs and gastric cancer was found as the follow up in these studies was relatively short (maximum follow up was 36 months). On the other hand, a systemic review of three observational studies by Tran-Duy and colleagues showed that PPIs were associated with an increased gastric cancer risk (pooled OR 1.43; 95% CI: 1.23–1.66).⁵⁴ Inconsistent results were, however, observed when the effect of PPIs was studied according to duration of PPI use (<1 year, \geq 1 year and >3 years). If only patients with PPI use < 1 year were compared with non-PPI users, the pooled OR was 1.76 (95% CI 1.24–2.52). However, no statistically significant association was observed for patients using PPI \geq 1 year (pooled OR 1.31; 95% CI 0.79–2.19), but the greatest risk was noted for those using PPI > 3 years (pooled OR 2.45; 95% CI 1.41–2.45). The authors proposed that PPIs may be prescribed for a short period as part of the *H. pylori* eradication regimen for those using PPI < 1 year; and when sufficiently long enough time is allowed, PPIs and *H. pylori* infection act synergistically to increase the gastric cancer risk in those using PPI > 3 years.

On the other hand, previous reassuring studies on the long-term safety of PPIs neither had sufficient observation period nor adequate power with small sample size.^{29,55} Moreover, there are other limitations of previous studies. First, all except the study by Poulsen *et al.*⁵⁶ failed to adjust for *H. pylori* status or eradication. As such, the establishment of causal relationship between PPIs and gastric cancer is severely compromised by this most

important confounding factor for gastric cancer development. Second, indication bias is possible as only the study by Garcia and colleagues⁵⁷ took the indication of PPIs (GERD, PUD and dyspepsia) into analysis. Third, protopathic bias (or reverse causality) exists, since the presence of prediagnosis cancer symptoms may warrant the prescription of PPIs. Fourth, most of the studies failed to take into account the potential role of other medications in gastric cancer development, including statins,⁵⁸ metformin,⁵⁹ aspirin,⁶⁰ nonsteroidal anti-inflammatory drugs (NSAIDs) and cyclooxygenase-2 (COX-2) inhibitors.

To address the confounding effect of *H. pylori* infection, we have recently carried out a territory-wide retrospective cohort study on *H. pylori*-eradicated patients ($n = 63,397$). During a median observation period of 7.6 years [interquartile range (IQR):5.1–10.3 years],⁶¹ PPI use (defined as at least weekly use) was associated with an increased gastric cancer risk (HR 2.44; 95% CI 1.42–4.20). On the other hand, H2RAs, which served as negative control exposure, were not associated with an increased cancer risk (HR 0.72; 95% CI 0.48–1.07). With non-PPI use as the reference group, the risk of gastric cancer by PPI use increased with increasing frequency (HR 2.43 for weekly to less-than-daily use, and HR 4.55 for daily use) and duration (HR 5.04, 6.65 and 8.34 for \geq 1 year, \geq 2 years and \geq 3 years, respectively). The adjusted absolute risk difference was 4.29 more gastric cancer cases per 10,000 person-years in PPI users than non-PPI users. Furthermore, another matched cohort of PPI users who had not received *H. pylori* therapy ($n = 142,460$) was recruited for comparison. Of note, PPI users without prior *H. pylori* therapy had the lowest incidence rate of gastric cancer (0.8 cases per 10,000 person-years) among the three groups (non-PPI users with prior *H. pylori* therapy: 2.9 per 10,000 person-years; PPI users with prior *H. pylori* therapy: 8.1 per 10,000 person-years). Therefore, the presence of current or even prior *H. pylori* infection appears to be a more important determinant of gastric cancer risk than PPIs, and PPI-associated gastric cancers are more likely to occur in subjects with underlying *H. pylori*-associated gastric damage.

Our study is the first to demonstrate that long-term PPI use is still associated with an increased gastric cancer risk even after *H. pylori* eradication, with a dose- and time-response relationship.

Several efforts of our study in minimizing the bias to determine a possible causal relationship should be noted. First, the large sample size and long observation time allows for an accurate estimation of the gastric cancer incidence among PPI users. Second, protopathic bias was avoided by excluding PPI prescriptions in the 6 months preceding gastric cancer diagnosis. Third, indication bias was unlikely a significant issue as a similar increase in gastric cancer risk was not observed for H2RAs, which are less potent than PPIs in terms of acid suppression. In addition, the lowest gastric cancer risk among PPI users without prior *H. pylori* therapy argues against a significant indication bias. Fourth, comorbid conditions and medications, which had not been adequately addressed in previous studies were included in the propensity score adjustment. Nevertheless, several limitations exist, including failure to capture some of the risk factors like lifestyle factors, family history and histology information from the electronic healthcare database system.⁶²

Four recent studies by other groups, published after our study, had findings consistent with ours. Among the four studies, one is a nationwide population-based study from Sweden, a country with a relatively low gastric cancer incidence.⁶³ It examined the gastric cancer risk in PPI users and H2RA users as compared with the Swedish background population of the same age, sex and calendar period (7.1–7.6 million adults). The standardized incidence ratio (SIR) of gastric cancer with PPI use was 3.38 (95% CI 3.25–3.53). Despite a sensitivity analysis to address protopathic bias (all gastric cancer cases diagnosed within 1 year of the study commencement were excluded), the risk remained albeit attenuated (SIR 1.6; 95% CI 1.51–1.71). Again, H2RA use was not a significant risk factor (SIR 0.57; 95% CI: 0.29–0.99).

The remaining three studies were from Asia, including two from Taiwan and one from Japan. The two Taiwanese studies were both case-control studies (controls were age- and sex-matched with cases in a 1:1 ratio). The first one ($n = 2122$) showed that PPIs were associated with an increased gastric cancer risk by 2.48 fold (95% CI 1.92–3.20) among GERD patients.⁶⁴ A higher risk was demonstrated by an increase in defined daily dose. The second study ($n = 1298$) also showed a similar result, with longer duration of PPI use conferring a higher risk as compared with

non-PPI use [≤ 6 month PPIs: OR 1.59 (95% CI 1.24–2.05) *versus* > 6 month PPIs: OR 2.00 (95% CI 1.36–2.95)].⁶⁵ The Japanese study was a retrospective cohort study of 571 *H. pylori*-eradicated patients, which addressed one important limitation of previous studies by adjusting for gastric precancerous lesions (corpus atrophy and intestinal metaplasia).⁶⁶ During a mean follow up of 6.9 years, PPI use was associated with an increased gastric cancer risk (HR 3.61; 95% CI 1.49–8.77). Such an association was only observed among patients with intestinal metaplasia, indicating PPIs potentially increase gastric cancer risk in patients with pre-existing gastric precancerous lesions. Notably, the risk of PPIs was higher among patients with mild intestinal metaplasia than those with severe changes [HR 16.0 (95% CI 1.90–134) *versus* HR 3.06 (95% CI 0.62–15.0)], which may be related to the small sample size from the subgroup analysis. Table 1 summarizes the characteristics and results of various observational studies.

However, it is noteworthy that some important risk factors (e.g. diet, smoking, alcohol, family history of gastric cancer) were not taken into consideration in some of these observational studies. In addition, residual confounding is inherent in all observational studies. Therefore, a causal relationship between PPIs and gastric cancer still cannot be firmly established. Nevertheless, fulfillment of the Bradford Hill criteria may help to strengthen the possible causal relationship.⁶⁷

Effect of proton-pump inhibitors on gastric cancer in different subgroups

In a meta-analysis of seven studies,⁶⁸ Wan and colleagues found that the risk of PPIs was more prominent among Asians than Whites [OR 2.44 (95% CI 1.89–3.00) *versus* OR: 1.86 (95% CI 0.54–3.18)]. The effect of PPIs on gastric cancer is also site specific, with higher risk for noncardia than cardia gastric cancer [OR 2.45 (95% CI 1.44–3.45) *versus* OR 1.64 (95% CI 0.23–3.51)].

In the nationwide Swedish study,⁶³ the risk of PPIs appears to be similar between males (SIR 3.65; 95% CI 3.45–3.85) and females (SIR 3.07; 95% CI 2.87–3.28). Importantly, the risk was most pronounced in younger age groups. The highest risk was observed among PPI users < 40 years when compared with non-PPI users (SIR 22.76; 95% CI 15.94–31.52), while the lowest

Table 1. Summary of observational studies on the association between proton-pump inhibitors and gastric cancer development.

References	Study design	Sample size	Patient characteristics/ region	Factors considered (regression model or stratified analysis)	*Results
Garcia Rodriguez <i>et al.</i> ⁵⁷	Nested case-control study (matched with age, sex, and calendar year)	10,522	United Kingdom	1, 2, 4, 5, 13,14	OR 1.75 (95% CI 1.10–2.79)
Tamim <i>et al.</i> ⁸⁰	Nested case-control study (matched with age and sex)	8229	Canada	1,2, 17	OR 1.46 (95% CI: 1.22–1.74)
Poulsen <i>et al.</i> ⁵⁶	Population-based cohort study	280,872	Denmark	1, 3–5, 9, 10, 13, 17	IRR 2.3 (95% CI 1.2–4.3; patients with ≥ 5 years of follow up)
Cheung <i>et al.</i> ⁶¹	Population-based cohort study	63,397	<i>H. pylori</i> -eradicated patients/Hong Kong	1–12, 16, 17	HR 2.44 (95% CI 1.42–4.20)
Brusselsaers <i>et al.</i> ⁶³	Nationwide population-based cohort study	843,003 PPI or H2RA users (versus general population of 7.1–7.6 million)	Sweden	1–3, 6, 10, 13, 16, 17	SIR 3.38 (95% CI 3.25–3.53)
Peng <i>et al.</i> ⁶⁴	Case-control study (matched with age, sex, and calendar year)	2122 (1:1 ratio)	GERD patients/Taiwan	1, 2, 10, 13, 14	OR 2.48 (95% CI 1.92–3.20)
Lai <i>et al.</i> ⁶⁵	Case-control study (matched with age, sex, and calendar year)	1298 (1:1 ratio)	Taiwan	1–8, 10, 13, 17	≤ 6 -month PPI: OR 1.59 (95% CI 1.24– 2.05) >6-month PPI: OR 2.00 (95% CI 1.36–2.95)
Niikura <i>et al.</i> ⁶⁶	Retrospective cohort study	571	<i>H. pylori</i> -eradicated patients/Japan	3, 10, 15	HR 3.61; 95% CI 1.49–8.77

*Results are presented after adjustment for covariates.

1, age; 2, sex; 3, *Helicobacter pylori* status; 4, smoking; 5, alcohol; 6, history of PUD; 7, DM; 8, other comorbidities; 9, aspirin/NSAIDs/COX-2 inhibitors; 10, H2RAs; 11, statins; 12, metformin; 13, calendar period; 14, socioeconomic status; 15, gastric histology; 16, indication bias; 17, protopathic bias; CI, confidence interval; COX-2, cyclooxygenase-2; DM, diabetes mellitus; IRR, incidence rate ratio; GERD, gastroesophageal reflux disease; HR, hazard ratio; H2RAs, histamine-2 receptor antagonists; OR, odds ratio; PPIs, proton-pump inhibitors; PUD, peptic ulcer disease; NSAIDs, nonsteroidal anti-inflammatory drugs; SIR, standardized incidence ratio.

risk was found among PPI users aged ≥ 70 years (SIR 2.76; 95% CI 2.61–2.92). The authors provide several explanations, which included an increased prevalence of atrophic gastritis in relation to obesity⁶⁹ as well as acceleration of gastric carcinogenesis in younger age groups (with a

higher likelihood of a positive family history⁷⁰), hence increasing the vulnerability to the potential carcinogenic effect of PPIs.

Stratified analysis according to PPI indications was also performed in this study.⁶³ The risk was much

larger among *H. pylori*-infected (SIR 9.76; 95% CI 8.87–10.71) than *H. pylori*-negative patients (SIR 2.91; 95% CI 2.78–3.05). Among the common indications for PPIs, the risk was highest in patients with PUD (SIR 8.75; 95% CI 8.12–9.41), while the risk was similar among those with gastroduodenitis (SIR 3.68; 95% CI 3.31–4.09), dyspepsia (SIR 3.07; 95% CI 2.58–3.63) and GERD (SIR 3.04; 95% CI 2.80–3.31).

Effect of different proton-pump inhibitors on gastric cancer risk

Animal studies showed that longer-acting PPIs could produce a higher risk of gastric tumors due to greater systemic exposure from a higher concentration time (area under the curve), leading to more gastrin stimulation.^{26,27,71} However, a meta-analysis concludes that different PPIs can be used interchangeably based on potency as reflected by the percentage time pH > 4 over a 24 h period (omeprazole 30 mg is equivalent to lansoprazole 30 mg, esomeprazole 20 mg and rabeprazole 20 mg).⁷² In a US Food and Drug Administration (FDA)-mandated long-term follow-up study of 61,864 PPI users, the risk of gastric cancer was comparable between the use of pantoprazole (a longer-acting PPI) and other shorter-acting PPIs (any combination of omeprazole, esomeprazole, lansoprazole or rabeprazole; HR 0.68; 95% CI 0.24–1.93) after adjusting for age, sex, *H. pylori* treatment, cumulative PPI dose and total years of PPI treatment. Although twice-daily PPI dosage suppresses gastric-acid production for a longer duration than once-daily dosage,⁷² current data on risk of gastric cancer are lacking and further studies are required.

Potential chemopreventive agents to reduce proton-pump-inhibitor-associated gastric cancer risk

Meta-analyses have shown that aspirin reduces gastric cancer risk without stratification according to *H. pylori* status.^{73,74} To address this issue, we conducted another study on the effect of aspirin specifically on *H. pylori*-eradicated subjects. Aspirin was shown to be associated with a lower gastric cancer risk among *H. pylori*-eradicated subjects (HR 0.30; 95% CI 0.15–0.61), with a frequency-, duration-, and dose-response relationship being observed.⁶⁰ A subsequent *post hoc* analysis⁷⁵ showed that the harmful effect of PPIs was higher (HR 3.73; 95% CI 2.11–6.60) among nonaspirin users,

while PPIs were not associated with an increased risk of gastric cancer among aspirin users (HR 0.35; 95% CI 0.04–2.74). The potential detrimental effect of PPIs on gastric cancer appears to be negated by aspirin use, although this observation necessitates validation by studies from other centers. Nevertheless, our study finding prompts the investigation of the role of other potential chemopreventive agents, such as metformin⁷⁶ and statins,⁵⁸ in reducing gastric cancer risk among PPI users should be further explored.

Recommendations on proton-pump inhibitor use in clinical practice

Despite the potential harmful effects of PPIs, they are so far the most effective therapy for PUD, GERD and in preventing aspirin-/NSAID-related upper gastrointestinal bleeding (UGIB). Indeed, the rational use of PPIs should be promoted to minimize any potential side effects associated with long-term use, rather than irrational avoidance. Physicians should consider the lowest effective dose of PPIs with a finite treatment period, particularly for nonerosive GERD and nonulcer dyspepsia. A stepdown approach to less potent acid-suppressive agents such as H2RAs should also be considered in appropriate settings.

However, certain clinical conditions may mandate long-term PPI use. For instance, individuals who are at high risk of aspirin-/NSAID-related UGIB should be given long-term PPIs.⁷⁷ Barrett's esophagus is another condition in which long-term use of PPIs is recommended.⁷⁸ If long-term PPI use is necessary, it is advisable to have *H. pylori* tested and eradicated if present so as to prevent the development of corpus atrophy, hence reducing gastric cancer risk.⁷⁹ It has also been proposed that nonfasting chromogranin A be used as a serological marker in long-term PPI users to monitor the degree of ECL-cell hyperplasia.⁵¹ The effectiveness of this approach, however, has not yet been studied by prospective clinical studies and cost-effectiveness studies according to local gastric cancer incidence and different subgroups.

Conclusion

Emerging evidence from multiple observational studies suggests long-term use of PPIs is associated with a higher risk of gastric cancer development. However, the risk is likely limited to individuals with current or past history of *H.*

pylori infection, particularly those with underlying precancerous gastric lesions. Physicians should prescribe PPIs according to individual's risk-benefit profile rather than withholding PPIs from those with genuine indications, such as Barrett's esophagus or high risk of UGIB. This is particularly important for aspirin users at high risk of UGIB, as aspirin may negate the potential harmful effects of PPIs on gastric cancer development. Further well-designed prospective studies are warranted to confirm the potential role of PPIs in gastric cancer according to baseline gastric histology and its interaction with other chemopreventive agents like aspirin, statins, and metformin.

Acknowledgements

All authors contributed equally to this paper with literature review and analysis, drafting and critical revision and editing, and approval of the final version of this article.

Funding

This research received no specific grant from any funding agency in the public, commercial, or not-for-profit sectors.

Conflict of interest statement

WKL has received honorarium for attending advisory board meetings of Takeda and Abbott Laboratories. There are no other competing interests.

References

1. Fitzmaurice C, Allen C, Barber RM, *et al.* Global, regional, and national cancer incidence, mortality, years of life lost, years lived with disability, and disability-adjusted life-years for 32 cancer groups, 1990 to 2015: a systematic analysis for the global burden of disease study. *JAMA Oncol* 2017; 3: 524–548.
2. Anwar W, Armstrong BK and Correa P. Infection with *Helicobacter pylori*. *IARC Monogr Eval Carcinog Risks Hum* 1994; 61: 177–240.
3. *Helicobacter and Cancer Collaborative Group.* Gastric cancer and *Helicobacter pylori*: a combined analysis of 12 case control studies nested within prospective cohorts. *Gut* 2001; 49: 347–353.
4. International Agency for Research on Cancer. *Helicobacter pylori* eradication as a strategy for preventing gastric cancer. IARC Working Group Reports. Vol. 8, WHO Press, World Health Organization, Geneva, Switzerland, 2014.
5. Correa P. Human gastric carcinogenesis: a multistep and multifactorial process—first American Cancer Society Award lecture on cancer epidemiology and prevention. *Cancer Res* 1992; 52: 6735–6740.
6. Uemura N, Okamoto S, Yamamoto S, *et al.* *Helicobacter pylori* infection and the development of gastric cancer. *N Engl J Med* 2001; 345: 784–789.
7. Song H, Ekhedden IG, Zheng Z, *et al.* Incidence of gastric cancer among patients with gastric precancerous lesions: observational cohort study in a low risk Western population. *BMJ* 2015; 351: h3867.
8. Lee YC, Chiang TH, Chou CK, *et al.* Association between *Helicobacter pylori* eradication and gastric cancer incidence: a systematic review and meta-analysis. *Gastroenterology* 2016; 150: 1113–1124.e5.
9. Ford AC, Forman D, Hunt RH, *et al.* *Helicobacter pylori* eradication therapy to prevent gastric cancer in healthy asymptomatic infected individuals: systematic review and meta-analysis of randomised controlled trials. *BMJ* 2014; 348: g3174.
10. Cheung KS and Leung WK. Risk of gastric cancer development after eradication of *Helicobacter pylori*. *World J Gastrointest Oncol* 2018; 10: 115–123.
11. Lundell L, Vieth M, Gibson F, *et al.* Systematic review: the effects of long-term proton pump inhibitor use on serum gastrin levels and gastric histology. *Aliment Pharmacol Ther* 2015; 42: 649–663.
12. Sanduleanu S, Jonkers D, De Bruine A, *et al.* Non-*Helicobacter pylori* bacterial flora during acid-suppressive therapy: differential findings in gastric juice and gastric mucosa. *Aliment Pharmacol Ther* 2001; 15: 379–388.
13. Forgacs I and Loganayagam A. Overprescribing proton pump inhibitors. *BMJ* 2008; 336: 2–3.
14. Yang YX, Lewis JD, Epstein S, *et al.* Long-term proton pump inhibitor therapy and risk of hip fracture. *JAMA* 2006; 296: 2947–2953.
15. Janarthanan S, Ditah I, Adler DG, *et al.* *Clostridium difficile*-associated diarrhea and proton pump inhibitor therapy: a meta-analysis. *Am J Gastroenterol* 2012; 107: 1001–1010.
16. Laheij RJ, Sturkenboom MC, Hassing RJ, *et al.* Risk of community-acquired pneumonia and use of gastric acid-suppressive drugs. *JAMA* 2004; 292: 1955–1960.

17. Sherwood MW, Melloni C, Jones WS, *et al.* Individual proton pump inhibitors and outcomes in patients with coronary artery disease on dual antiplatelet therapy: a systematic review. *J Am Heart Assoc* 2015; 4: e002245.
18. Havu N. Enterochromaffin-like cell carcinoids of gastric mucosa in rats after life-long inhibition of gastric secretion. *Digestion* 1986; 35(Suppl. 1): 42–55.
19. Poynter D, Pick CR, Harcourt RA, *et al.* Association of long lasting unsurmountable histamine H2 blockade and gastric carcinoid tumours in the rat. *Gut* 1985; 26: 1284–1295.
20. Weeks DL, Eskandari S, Scott DR, *et al.* A H⁺-gated urea channel: the link between *Helicobacter pylori* urease and gastric colonization. *Science* 2000; 287: 482–485.
21. Kuipers EJ, Uytterlinde AM, Pena AS, *et al.* Increase of *Helicobacter pylori*-associated corpus gastritis during acid suppressive therapy: implications for long-term safety. *Am J Gastroenterol* 1995; 90: 1401–1406.
22. Verdu EF, Armstrong D, Fraser R, *et al.* Effect of *Helicobacter pylori* status on intragastric pH during treatment with omeprazole. *Gut* 1995; 36: 539–543.
23. Gillen D, Wirz AA, Neithercut WD, *et al.* *Helicobacter pylori* infection potentiates the inhibition of gastric acid secretion by omeprazole. *Gut* 1999; 44: 468–75.
24. Kuipers EJ, Lundell L, Klinkenberg-Knol EC, *et al.* Atrophic gastritis and *Helicobacter pylori* infection in patients with reflux esophagitis treated with omeprazole or fundoplication. *N Engl J Med* 1996; 334: 1018–1022.
25. Waldum HL, Sandvik AK, Brenna E, *et al.* Gastrin-histamine sequence in the regulation of gastric acid secretion. *Gut* 1991; 32: 698–701.
26. Betton GR, Dormer CS, Wells T, *et al.* Gastric ECL-cell hyperplasia and carcinoids in rodents following chronic administration of H₂-antagonists SK&F 93479 and oxmetidine and omeprazole. *Toxicol Pathol* 1988; 16: 288–298.
27. Berlin RG. Omeprazole. Gastrin and gastric endocrine cell data from clinical studies. *Dig Dis Sci* 1991; 36: 129–136.
28. Waldum HL, Sandvik AK and Idle JR. Gastrin is the most important factor in ECL tumorigenesis. *Gastroenterology* 1998; 114: 1113–1115.
29. Fiocca R, Mastracci L, Attwood SE, *et al.* Gastric exocrine and endocrine cell morphology under prolonged acid inhibition therapy: results of a 5-year follow-up in the LOTUS trial. *Aliment Pharmacol Ther* 2012; 36: 959–971.
30. Attwood SE, Ell C, Galmiche JP, *et al.* Long-term safety of proton pump inhibitor therapy assessed under controlled, randomised clinical trial conditions: data from the SOPRAN and LOTUS studies. *Aliment Pharmacol Ther* 2015; 41: 1162–1174.
31. Hayakawa Y, Chang W, Jin G, *et al.* Gastrin and upper GI cancers. *Curr Opin Pharmacol* 2016; 31: 31–37.
32. Wang TC, Bonner-Weir S, Oates PS, *et al.* Pancreatic gastrin stimulates islet differentiation of transforming growth factor alpha-induced ductular precursor cells. *J Clin Invest* 1993; 92: 1349–1356.
33. Wang TC, Dangler CA, Chen D, *et al.* Synergistic interaction between hypergastrinemia and *Helicobacter* infection in a mouse model of gastric cancer. *Gastroenterology* 2000; 118: 36–47.
34. Takaishi S, Cui G, Frederick DM, *et al.* Synergistic inhibitory effects of gastrin and histamine receptor antagonists on *Helicobacter*-induced gastric cancer. *Gastroenterology* 2005; 128: 1965–1983.
35. Sekikawa A, Fukui H, Fujii S, *et al.* REG Ialpha protein may function as a trophic and/or anti-apoptotic factor in the development of gastric cancer. *Gastroenterology* 2005; 128: 642–653.
36. Murphy G, Abnet CC, Choo-Wosoba H, *et al.* Serum gastrin and cholecystokinin are associated with subsequent development of gastric cancer in a prospective cohort of Finnish smokers. *Int J Epidemiol* 2017; 46: 914–923.
37. Borch K, Renvall H and Liedberg G. Gastric endocrine cell hyperplasia and carcinoid tumors in pernicious anemia. *Gastroenterology* 1985; 88: 638–648.
38. Zamcheck N, Grable E, Ley A, *et al.* Occurrence of gastric cancer among patients with pernicious anemia at the Boston City Hospital. *N Engl J Med* 1955; 252: 1103–1110.
39. Soga J, Koro T, Tazawa K, *et al.* Argyrophil cell microneoplasia in the Mastomys' stomach—an observation on early carcinoid formation. *J Natl Cancer Inst* 1975; 55: 1001–1006.
40. Azzopardi JG and Pollock DJ. Argentaffin and Argyrophil cells in gastric carcinoma. *J Pathol Bacteriol* 1963; 86: 443–451.
41. Wilander E, El-Salhy M and Pitkanen P. Histopathology of gastric carcinoids: a survey of 42 cases. *Histopathology* 1984; 8: 183–193.

42. Waldum HL, Aase S, Kvetnoi I, *et al.* Neuroendocrine differentiation in human gastric carcinoma. *Cancer* 1998; 83: 435–444.
43. Bakkelund K, Fossmark R, Nordrum I, *et al.* Signet ring cells in gastric carcinomas are derived from neuroendocrine cells. *J Histochem Cytochem* 2006; 54: 615–621.
44. Sordal O, Qvigstad G, Nordrum IS, *et al.* The PAS positive material in gastric cancer cells of signet ring type is not mucin. *Exp Mol Pathol* 2014; 96: 274–278.
45. Qvigstad G, Qvigstad T, Westre B, *et al.* Neuroendocrine differentiation in gastric adenocarcinomas associated with severe hypergastrinemia and/or pernicious anemia. *APMIS* 2002; 110: 132–139.
46. Sanduleanu S, Jonkers D, De Bruine A, *et al.* Double gastric infection with *Helicobacter pylori* and non-*Helicobacter pylori* bacteria during acid-suppressive therapy: increase of pro-inflammatory cytokines and development of atrophic gastritis. *Aliment Pharmacol Ther* 2001; 15: 1163–1175.
47. Engstrand L and Lindberg M. *Helicobacter pylori* and the gastric microbiota. *Best Pract Res Clin Gastroenterol* 2013; 27: 39–45.
48. Jakszyn P, Bingham S, Pera G, *et al.* Endogenous versus exogenous exposure to N-nitroso compounds and gastric cancer risk in the European Prospective Investigation into Cancer and Nutrition (EPIC-EURGAST) study. *Carcinogenesis* 2006; 27: 1497–1501.
49. Parsons BN and Ijaz UZ. Comparison of the human gastric microbiota in hypochlorhydric states arising as a result of *Helicobacter pylori*-induced atrophic gastritis, autoimmune atrophic gastritis and proton pump inhibitor use. *PLoS Pathog* 2017; 13: e1006653.
50. Bray F, Jemal A, Grey N, *et al.* Global cancer transitions according to the Human Development Index (2008–2030): a population-based study. *Lancet Oncol* 2012; 13: 790–801.
51. Waldum HL, Sordal O and Fossmark R. Proton pump inhibitors (PPIs) may cause gastric cancer - clinical consequences. *Scand J Gastroenterol* 2018; 53: 639–642.
52. Eslami L and Nasser-Moghaddam S. Meta-analyses: does long-term PPI use increase the risk of gastric premalignant lesions? *Arch Iran Med* 2013; 16: 449–458.
53. Song H, Zhu J and Lu D. Long-term proton pump inhibitor (PPI) use and the development of gastric pre-malignant lesions. *Cochrane Database Syst Rev* 2014: Cd010623.
54. Tran-Duy A, Spaetgens B, Hoes AW, *et al.* Use of proton pump inhibitors and risks of fundic gland polyps and gastric cancer: systematic review and meta-analysis. *Clin Gastroenterol Hepatol* 2016; 14: 1706–1719.e5.
55. Klinkenberg-Knol EC, Nelis F, Dent J, *et al.* Long-term omeprazole treatment in resistant gastroesophageal reflux disease: efficacy, safety, and influence on gastric mucosa. *Gastroenterology* 2000; 118: 661–669.
56. Poulsen AH, Christensen S, McLaughlin JK, *et al.* Proton pump inhibitors and risk of gastric cancer: a population-based cohort study. *Br J Cancer* 2009; 100: 1503–1507.
57. Garcia Rodriguez LA, Lagergren J and Lindblad M. Gastric acid suppression and risk of oesophageal and gastric adenocarcinoma: a nested case control study in the UK. *Gut* 2006; 55: 1538–1544.
58. Singh PP and Singh S. Statins are associated with reduced risk of gastric cancer: a systematic review and meta-analysis. *Ann Oncol* 2013; 24: 1721–1730.
59. Zhou XL, Xue WH, Ding XF, *et al.* Association between metformin and the risk of gastric cancer in patients with type 2 diabetes mellitus: a meta-analysis of cohort studies. *Oncotarget* 2017; 8: 55622–55631.
60. Cheung KS, Chan EW, Wong AYS, *et al.* Aspirin and risk of gastric cancer after *Helicobacter pylori* eradication: a territory-wide study. *J Natl Cancer Inst* 2018; 110: 743–749.
61. Cheung KS, Chan EW, Wong AYS, *et al.* Long-term proton pump inhibitors and risk of gastric cancer development after treatment for *Helicobacter pylori*: a population-based study. *Gut* 2018; 67: 28–35.
62. Rugge M, Meggio A, Pennelli G, *et al.* Gastritis staging in clinical practice: the OLGA staging system. *Gut* 2007; 56: 631–636.
63. Brusselaers N, Wahlin K, Engstrand L, *et al.* Maintenance therapy with proton pump inhibitors and risk of gastric cancer: a nationwide population-based cohort study in Sweden. *BMJ Open* 2017; 7: e017739.
64. Peng YC, Huang LR, Lin CL, *et al.* Association between proton pump inhibitors use and risk of gastric cancer in patients with GERD. *Gut* 2018; 68: 374–376.
65. Lai SW, Lai HC, Lin CL, *et al.* Proton pump inhibitors and risk of gastric cancer in a case-control study. *Gut*. Epub ahead of print 16 April 2018. DOI: 10.1136/gutjnl-2018-316371.

66. Niikura R, Hayakawa Y, Hirata Y, *et al.* Long-term proton pump inhibitor use is a risk factor of gastric cancer after treatment for *Helicobacter pylori*: a retrospective cohort analysis. *Gut* 2018; 67: 1908–1910.
67. Cheung KS and Leung WK. Response to letter to the editor by Moayyedi *et al.* *Gut*. Epub ahead of print 18 August 2018. DOI: 10.1136/gutjnl-2018-317127.
68. Wan QY, Wu XT, Li N, *et al.* Long-term proton pump inhibitors use and risk of gastric cancer: a meta-analysis of 926 386 participants. *Gut*. Epub ahead of print 3 April 2018. DOI: 10.1136/gutjnl-2018-316416.
69. Song H, Held M, Sandin S, *et al.* Increase in the prevalence of atrophic gastritis among adults age 35 to 44 years old in northern sweden between 1990 and 2009. *Clin Gastroenterol Hepatol* 2015; 13: 1592–1600.e1.
70. Tavares A, Gandra A, Viveiros F, *et al.* Analysis of clinicopathologic characteristics and prognosis of gastric cancer in young and older patients. *Pathol Oncol Res* 2013; 19: 111–117.
71. Freston JW. Omeprazole, hypergastrinemia, and gastric carcinoid tumors. *Ann Intern Med* 1994; 121: 232–233.
72. Graham DY and Tansel A. Interchangeable use of proton pump inhibitors based on relative potency. *Clin Gastroenterol Hepatol* 2018; 16: 800–808.e7.
73. Wang WH, Huang JQ, Zheng GF, *et al.* Non-steroidal anti-inflammatory drug use and the risk of gastric cancer: a systematic review and meta-analysis. *J Natl Cancer Inst* 2003; 95: 1784–1791.
74. Algra AM and Rothwell PM. Effects of regular aspirin on long-term cancer incidence and metastasis: a systematic comparison of evidence from observational studies versus randomised trials. *Lancet Oncol* 2012; 13: 518–527.
75. Cheung KS and Leung WK. Modification of gastric cancer risk associated with proton pump inhibitors by aspirin after *Helicobacter pylori* eradication. *Oncotarget* 2018; 9: 36891–36893.
76. Cheung KS, Chan EW, Wong AYS, *et al.* Metformin use and gastric cancer risk in diabetic patients after *Helicobacter pylori* eradication. *J Natl Cancer Inst*. Epub ahead of print 16 October 2018. DOI: 10.1093/jnci/djy144.
77. Lanza FL, Chan FK and Quigley EM. Guidelines for prevention of NSAID-related ulcer complications. *Am J Gastroenterol* 2009; 104: 728–738.
78. Shaheen NJ, Falk GW, Iyer PG, *et al.* ACG clinical guideline: diagnosis and management of barrett’s esophagus. *Am J Gastroenterol* 2016; 111: 30–50; quiz 51.
79. Malfertheiner P, Megraud F, O’Morain CA, *et al.* Management of *Helicobacter pylori* infection—the Maastricht V/Florence consensus report. *Gut* 2017; 66: 6–30.
80. Tamim H, Duranceau A, Chen LQ, *et al.* Association between use of acid-suppressive drugs and risk of gastric cancer. A nested case-control study. *Drug Saf* 2008; 31: 675–684.

Visit SAGE journals online
journals.sagepub.com/
home/tag

 SAGE journals