

MULTIPOLAR PLANETARY NEBULAE: NOT AS GEOMETRICALLY DIVERSIFIED AS THOUGHT

S.-N. CHONG (莊思寧)¹, SUN KWOK (郭新)², H. IMAI¹, D. TAFOYA³, AND J. CHIBUEZE¹

¹ Graduate School of Science and Engineering, Kagoshima University, 1-21-35 Korimoto, Kagoshima 890-0065, Japan; chongsnc@gmail.com

² Department of Physics, The University of Hong Kong, Pokfulam Road, Hong Kong; sunkwok@hku.hk

³ Onsala Space Observatory, SE-439 92 Onsala, Sweden

Received 2012 June 11; accepted 2012 October 1; published 2012 November 14

ABSTRACT

Planetary nebulae (PNe) have diverse morphological shapes, including point-symmetric and multipolar structures. Many PNe also have complicated internal structures such as tori, lobes, knots, and ansae. A complete accounting of all the morphological structures through physical models is difficult. A first step toward such an understanding is to derive the true three-dimensional structure of the nebulae. In this paper, we show that a multipolar nebula with three pairs of lobes can explain many such features, if orientation and sensitivity effects are taken into account. Using only six parameters—the inclination and position angles of each pair—we are able to simulate the observed images of 20 PNe with complex structures. We suggest that multipolar structure is an intrinsic structure of PNe and the statistics of multipolar PNe have been severely underestimated in the past.

Key word: planetary nebulae: general

1. INTRODUCTION

One of the fascinating aspects of planetary nebulae (PNe) is their diverse morphological shapes. Since the original morphological classification by Curtis (1918), many attempts have been made to classify the apparent morphology of PNe (Balick 1987; Stanghellini et al. 1993; Aaquist & Kwok 1996; Manchado et al. 1996; Parker et al. 2006) using descriptive terms such as “round,” “elliptical,” and “bipolar.” As the sensitivity of imaging techniques improved, increasing numbers of PNe were found to possess more than one pair of bipolar lobes. In early literature, the terms “twofold bipolarity,” “overlapping bipolar structures,” and “bi-butterfly” were used to describe these objects (Pascoli 1990a, 1990b). Manchado et al. (1996) introduced a new morphological class called “quadrupolar”: lobe pairs symmetric about two distinct axes. In general, the term “multipolar” refers to morphologies with at least two axes of symmetry. It is sometimes referred to as “polypolar” (López et al. 1998). A multipolar morphology is not only found in PNe, but is also observed in earlier phases of post-asymptotic giant branch (post-AGB) objects including pre-planetary nebulae (pPNe).

Deeper imaging of PNe has revealed that some well-known PNe are actually multipolar. For example, both NGC 2440 and NGC 6072 were classified as bipolar by Corradi & Schwarz (1995). However, detailed spatial and kinematical studies of optical lines by López et al. (1998) confirmed the presence of two pairs of lobes in NGC 2440, also identified in CO observations by Wang et al. (2008). Similarly, NGC 6072 appears to be an elliptical shell with faint extensions in the Digital Sky Survey optical image, but the *Spitzer Space Telescope* Infrared Array Camera (IRAC) and Canada–France–Hawaii Telescope (CFHT) molecular hydrogen (H₂) images revealed a complicated structure with three pairs of lobes and an elliptical ring (Kwok et al. 2010). NGC 7293 (the Helix Nebula) is known to have at least two bipolar outflows (Meaburn et al. 2008). NGC 6853, the Dumbbell Nebula, shows a pair of cones in addition to the well known dumbbell-shaped main nebula in the IRAC and CFHT H₂ images (Kwok et al. 2008). In these examples, it can be seen that deeper exposures and observations in other wavelengths can result in the identification of multipolar lobes.

Statistical results of the PNe morphology also show an increasing fraction of the multipolar class. In early

classifications, there were no multipolar categories, and such objects might have been included in the “point-symmetric” or “irregular” classes (e.g., Balick 1987; Schwarz et al. 1993; Corradi & Schwarz 1995). In more recent results from *Hubble Space Telescope* (HST) images, 12% of 140 post-AGB objects and 20% of 119 young PNe were classified as multipolar by Manchado et al. (2011) and Sahai et al. (2011), respectively. The trend may still be growing.

Efforts have been made to construct three-dimensional (3D) models of individual multipolar PNe, e.g., NGC 6644 (Hsia et al. 2010), Hb 5 (García-Díaz et al. 2011), and J 320 (Harman et al. 2004). However, as these models are tailor-made for each PN, the similarities and differences among objects are unclear, which hinders our understanding of the origin of multipolar morphology. In order to explain the presence of multiple outflow axes, one has to introduce additional hypotheses, such as precessing jets in the short transition period between the spherically symmetric AGB phase and the multipolar post-AGB phase. Bipolar, rotating episodic jets provide direct evidence of precession motions as observed in Fleming 1 (López et al. 1993) and K_jPn 8 (López et al. 1995). It is suggested that a rotating jet can account for the creation of continuous point-symmetric features at different distances from the geometric center, e.g., IRAS 16585-2145 (Guerrero et al. 2008) and IRAS 17028-1004 (Corradi et al. 2011). Moreover, precessing motions traced by water maser spots in early stages (e.g., Yung et al. 2011) may bring out an indirect verification. It is still under debate whether the multiple lobes are formed simultaneously or episodically (Sahai 2002). They may involve totally different physical processes.

Before starting to establish theories, the first step should be to determine the actual 3D structure, rather than applying only the projected two-dimensional (2D) images of these PNe. Based on the 3D model, one can estimate the kinematic timescale in each outflow direction to verify whether they were produced at the same time. It has been pointed out that the current classification schemes do not reflect the true 3D physical structure of the nebulae, as the observed images suffer from the effects of sensitivity dependence, atomic or molecular species dependence, and projection effects (Kwok 2010). As a first step toward understanding the true 3D structure of PNe, it would be useful to build a unified 3D model to see how far one can go

to reproduce the observed 2D images of individual objects. By making this attempt, we are trying to address the question of whether “each PN is unique” or whether they are just different manifestations of a unified structure.

In this paper, we explore answers to this question by beginning with a simple model of a PN with multiple lobes that all have the same shape, kinematic timescales, and outflow velocities. A sample selection of real PN images to be compared is given in the next section, and the model is described in detail in Section 3. Section 4 presents the projected images of the model in different parameters and a comparison with real PN images. Discussions including the meanings of parameters and the formation mechanisms can be found in Section 5.

2. SAMPLE SELECTION

To compare the modeled images with real observed ones, we searched through the literature (Sahai et al. 2011; Ueta et al. 2007; Guerrero et al. 2008; Harman et al. 2004 and references therein) for objects that have been observed in $H\alpha$ with the Wide-Field Planetary Camera 2 of the *HST*. Emission in the recombination line $H\alpha$ clearly indicates that the sources are PNe rather than pPNe in which the central stars are not hot enough for photoionization. Most of the objects are called young PNe according to their $[O\ III]\lambda 5007/H\alpha$ flux ratio of less than about unity (Sahai et al. 2011). $H\alpha$ emission, as the most commonly observed line of PNe, provides a larger pool for sample selection in this paper and future projects. The sample contains a total of 20 PN images retrieved from the Canadian Astronomy Data Center archive (details are listed in Table 2). These 20 objects are selected due to their resemblance to the projected images of our model. Therefore, we do not claim that they represent the whole PN set.

3. THE MODEL

Our model images are constructed using the 3D modeling software SHAPE (Steffen 2011). SHAPE is an interactive tool for morpho-kinematic modeling and image reconstruction. Customized objects can be constructed by starting with built-in basic geometrical shapes and adding modifiers to them.

We begin with a simple model where the nebula consists of three pairs of identical lobes. We first address the issue of projection effects on the lobes as observed from different orientations. All other parameters, such as the density profiles, are fixed and the inclination angle i and position angle (P.A.) of each pair are the only variable parameters. i is taken to be the angle between the lobe axis and the line of sight (LOS). As a result, there are only six independent parameters. From these six parameters, the separation angle θ between any two pairs of lobes can be calculated from the inner product. There are three values of θ for three pairs of lobes. The lobes are hollow inside with evenly distributed density within the “walls” of the lobes. The brightness is proportional to the square of the column density based on the fact that the intensity of H recombination lines is directly proportional to the square of the electron density (Kwok 2007).

4. RESULTS

4.1. Apparent Morphologies

Figure 1 shows the projected images of 100 randomly generated combinations of the three-paired model. Each pair of lobes in each image has an independent random orientation in the

3D space: the P.A. is a random multiple of five between -175 and $+180$ inclusive (i.e., $-175, -170, -165, \dots, 0, \dots, +180$); i is a random integer between 0 and 90 inclusive with a weight proportional to $\sin i$, as the differential solid angle in polar coordinates is $(\sin i \, d(i) \, d(\text{P.A.}))$. This expression indicates that a pair of lobes has a higher chance to be viewed edge-on than pole-on. The values of i and P.A. are listed in Table 1. It can be seen that although the true sizes of lobes are the same, the apparent length changes with the viewing angle. The combination of three pairs greatly increases the variance. In some special cases, the multipolar nature of the nebula is not obvious from the projected images, for example, when projections of two or more pairs of lobes are aligned along the same direction so that the lobes overlap with each other as seen by the observer. If one pair is viewed nearly pole-on or slightly tilted in the equatorial direction, then it may be wrongly interpreted as a feature in the equatorial direction or be labeled as a torus.

From this simulation, we can estimate the fraction of apparent morphologies created as the result of random orientation. The visual appearance of these images can be classified into the following classes:

1. Class 0: a round or elliptical appearance and no obvious lobes. The fraction belonging to this class is 0%.
2. Class 1: one pair of lobes, with or without a torus-like structure. The fraction belonging to this class is $5(\pm 4)\%$.
3. Class 2: two pairs of lobes, with similar or different lengths. The fraction belonging to this class is $46(\pm 5)\%$.
4. Class 3: three pairs of lobes. The fraction belonging to this class is $49(\pm 8)\%$.

We have adopted some “usual customs” of morphological classification of PNe: if two pairs of lobes look nearly perpendicular and one of them is significantly shorter, then the short pair is usually identified as the torus; shorter lobes overlapping with longer ones are called inner lobes rather than extra pairs of lobes. The classification of each image has been done by four individuals independently, and the overall results are listed in Table 1. The percentages above are from the overall results, and errors correspond to variations among individuals, which are within expectations and actually reflect the real situation of previous classification works.

This exercise shows that by assuming the number of pairs is at most three, only half of the PNe with three pairs of lobes will be correctly identified. The other half will have the number of lobes underestimated, and 5% of them will even be misclassified as single-paired, or more commonly called bipolar. In other words, the true number of those with three pairs of lobes should be ~ 2 times the number of visually identified ones. Denoting $n(a, b)$ as the number of PNe with a -pairs that are intrinsic but only with b -pairs that are observed, the above statement can be expressed as

$$\sum_{m=0}^3 n(3, m) \sim 2n(3, 3).$$

In general, the true number of those with x -pairs intrinsic should be

$$\sum_{m=0}^x n(x, m) = n(x, x) + \sum_{m=0}^{x-1} n(x, m) - \sum_{m=x+1}^N n(m, x), \quad (1)$$

where N is the maximum number of pairs in all PNe. This is a recurrence relation of x , to be solved with observational data and simulations together. Although observational images are

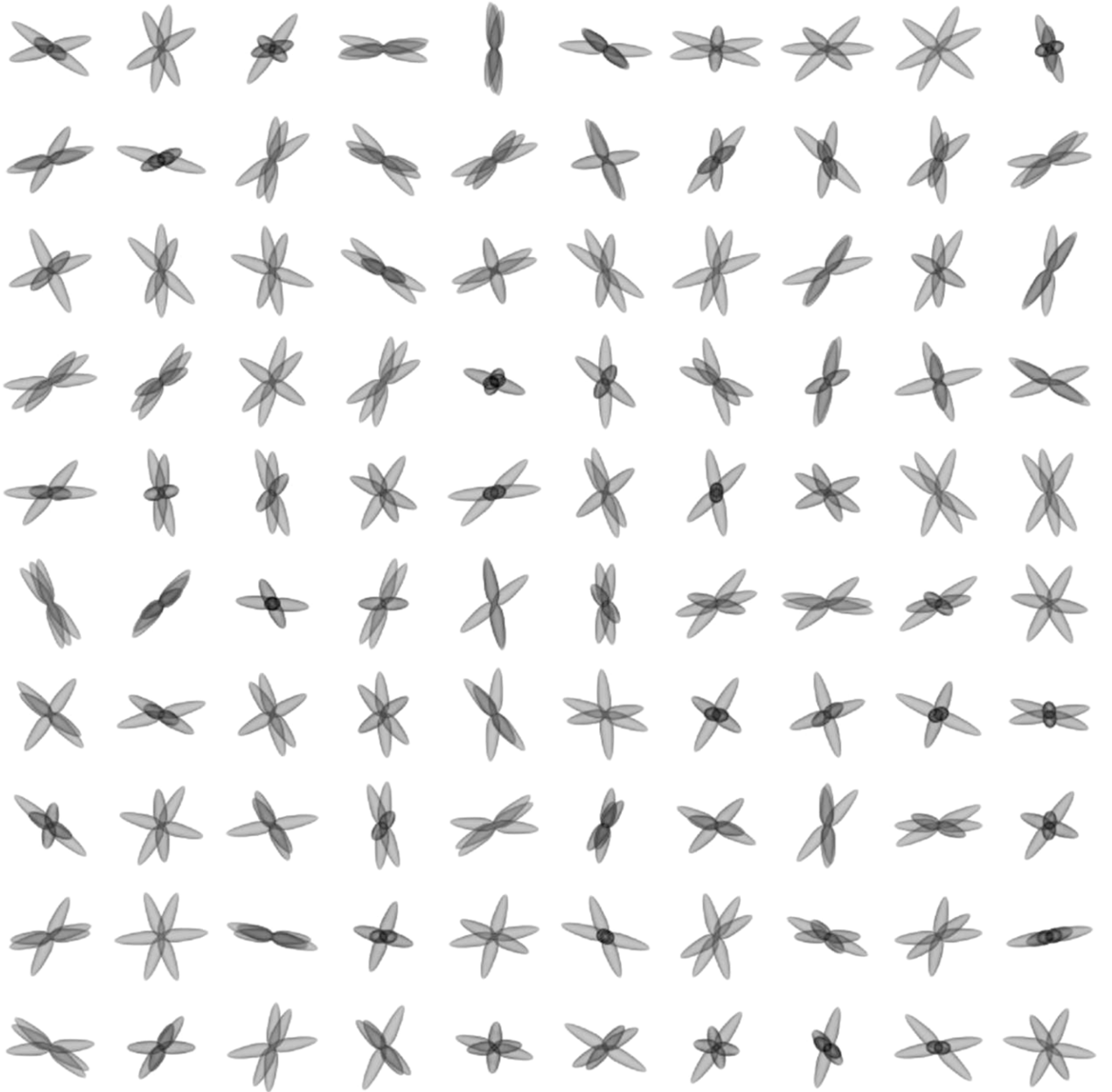


Figure 1. 100 projected images of the three-lobed model with randomly generated inclination and position angles for each pair. The scales are the same in all panels.

available in many PN catalogues, the projection effect makes it hard to tell whether an object with apparently x -pairs of lobes should be put in the first or third term on the right hand side of the above equation. Therefore, at the moment, it would be unwise to form a conclusion on the real fraction of multipolar PNe. On the other hand, it is expected that the fraction of apparent multipolar PNe

$$\frac{\sum_{m=2}^x n(x, m)}{\sum_{m=0}^x n(x, m)}$$

will increase with the actual number of pairs x , and thus the number of nebulae with over three lobes is more closely estimated than the three-paired ones.

4.2. The Effect of Sensitivity

In real observations, the morphological classification also suffers from sensitivity issues. In images of limited sensitivity or dynamic range, fainter features will be missed and their multipolar nature will not be recognized. Figure 2 illustrates a comparison between the images under high and low sensitivity conditions. The images in the second row are the same as the top row except that the pixels with brightness less than 1/3 of the peak brightness are not displayed. If one were to classify the apparent morphology based on the images in the second row, then one would arrive at very different morphological classes for the objects.

Moreover, the “broken” segments of faint lobes create an illusion of the presence of minor structures. The bottom left panel

Table 1
Randomly Generated Angles of Each Image in Figure 1
(from Left to Right and from Top to Bottom)

	i_1°	P.A. $_1^\circ$	i_2°	P.A. $_2^\circ$	i_3°	P.A. $_3^\circ$	Class
1	83	-125	64	105	22	-120	2
2	72	170	57	120	61	25	3
3	26	105	22	-130	65	-35	3
4	66	95	76	75	78	100	2
5	84	-175	71	0	55	-10	2
6	35	-130	85	-95	40	50	2
7	85	70	29	175	89	100	3
8	76	135	42	50	81	90	3
9	80	-130	84	-25	90	-65	3
10	16	-75	29	-175	50	20	2
11	74	105	54	-30	51	-80	2
12	27	115	14	105	79	75	2
13	61	-20	73	-55	68	175	3
14	61	65	90	40	49	-105	3
15	56	-50	49	145	79	-70	3
16	73	25	47	100	60	20	2
17	27	125	68	-40	42	180	2
18	56	170	82	-135	26	20	2
19	58	130	37	-15	71	-175	3
20	64	-85	85	125	58	135	3
21	34	-45	80	-155	69	110	3
22	89	0	49	155	85	45	3
23	69	70	75	-170	58	-20	3
24	30	-115	79	-135	85	65	2
25	67	-60	69	-75	46	-165	3
26	52	170	87	-125	80	25	3
27	78	-170	66	160	90	-70	3
28	62	-30	83	105	63	-35	2
29	51	180	88	150	41	60	3
30	89	-35	65	145	78	-5	2
31	56	140	87	95	84	-55	3
32	63	-45	38	115	69	150	3
33	63	-45	58	55	90	-15	3
34	88	-30	64	120	78	-10	3
35	43	-110	16	150	11	-70	1
36	22	-30	55	-130	90	180	2
37	44	45	56	-110	77	15	3
38	30	115	65	-10	88	165	2
39	37	-170	75	105	64	-160	2
40	63	110	87	60	57	60	2
41	63	140	26	-95	82	-90	2
42	75	-165	55	175	21	-80	2
43	80	20	30	140	61	180	3
44	65	-30	51	-115	43	-155	3
45	11	105	88	135	81	95	2
46	84	15	58	30	52	-50	3
47	8	-5	71	10	60	-45	2
48	52	60	42	-155	48	115	3
49	84	30	90	160	83	-125	3
50	76	150	84	-145	72	-170	3
51	81	15	80	40	81	25	3
52	55	-45	70	140	31	-55	1
53	34	-155	3	-95	51	85	2
54	31	90	90	-15	82	150	3
55	73	-170	90	10	70	-50	2
56	62	10	59	-10	29	-145	3
57	63	-75	73	-40	39	-105	3
58	71	90	82	80	60	-50	3
59	44	100	20	-125	90	125	2
60	75	30	68	150	55	-100	3
61	70	145	83	-135	51	55	2
62	52	60	78	-75	23	65	2
63	66	15	57	-145	57	-60	3
64	39	-55	67	-175	55	40	3
65	85	-140	48	-145	89	175	2

Table 1
(continued)

	i_1°	P.A. $_1^\circ$	i_2°	P.A. $_2^\circ$	i_3°	P.A. $_3^\circ$	Class
66	74	-110	77	5	55	100	3
67	12	-100	39	55	65	150	2
68	58	110	22	-55	70	-165	2
69	9	-70	89	65	48	160	2
70	13	5	60	100	61	-110	2
71	30	60	29	-10	86	50	2
72	66	-105	51	5	75	-30	3
73	44	-145	54	-155	82	100	2
74	69	-160	20	-35	70	-5	2
75	72	120	88	-50	71	85	3
76	39	-35	32	160	54	-10	2
77	37	75	54	135	67	-115	2
78	55	5	64	0	86	-40	2
79	37	-110	83	-65	69	-90	3
80	62	-35	16	-5	40	-110	2
81	63	-75	67	155	58	95	2
82	82	-20	86	95	90	20	3
83	50	75	55	-95	89	-105	1
84	40	-105	52	-20	15	-90	2
85	68	165	53	-115	76	100	3
86	76	-105	6	65	67	20	2
87	81	-30	72	-165	61	-60	3
88	70	-115	44	90	28	-135	2
89	69	-85	59	-10	54	125	3
90	68	-80	30	-75	13	-80	1
91	78	50	71	60	71	95	2
92	32	-25	53	-35	46	90	2
93	73	-5	64	155	77	-80	3
94	82	155	44	-145	54	-135	2
95	35	95	58	75	33	-5	3
96	36	-40	90	-120	53	120	3
97	67	145	29	80	27	-165	3
98	17	55	27	-140	62	165	1
99	72	-80	12	85	82	45	2
100	90	80	66	-25	52	30	3

Note. See Section 4.1 for the descriptions of “Class” and other details.

in Figure 2 looks like a bipolar nebula with point-symmetric ansae, filaments or knots around the lobes, similar to the Cat’s Eye Nebula (NGC 6543, Balick & Hajian 2004) and NGC 3242 (Ruiz et al. 2011). In fact, these features are the overlapping areas of two or more lobes: overlapping increases the column densities of walls so that they can still be seen while the other parts of the lobes are filtered out.

4.3. Comparison with Observations

In this section, we explore whether the simulated images are of any relevance to real observed PNe. We match the 20 selected real PNe images with simulated images of our simple model. While we do not claim that the sample is representative of all multipolar PNe, we hope to demonstrate that our model can be the first-order approximations to the true morphologies of the selected objects. For simplicity, we change only the six angles as described in Section 4.1 and keep all of the other parameters fixed. The effect of sensitivity is not included. Comparisons between the observed and simulated images are presented in Figure 3. The parameters used in the simulated images are listed in Table 2. The labels of the objects in Figure 3 are given in the first column of Table 2.

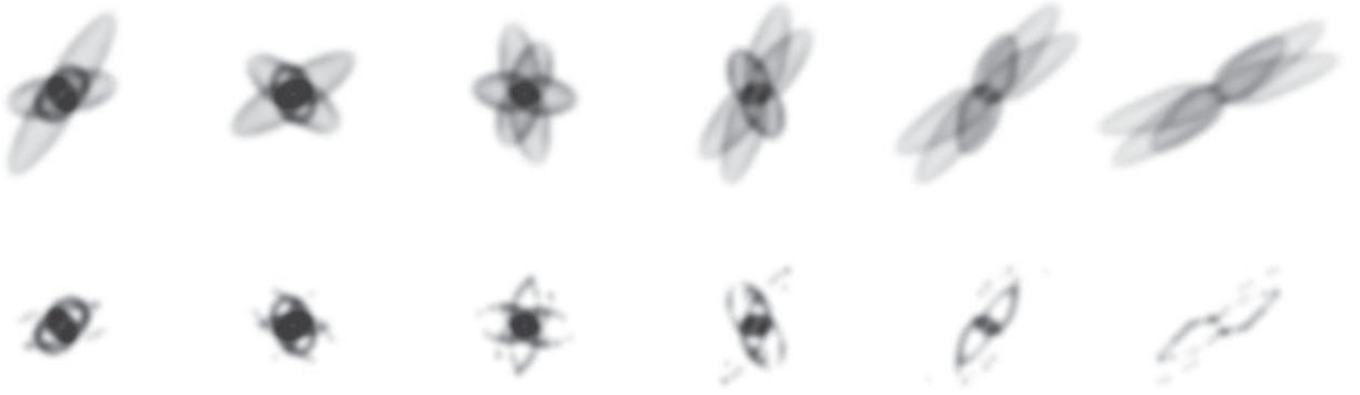


Figure 2. Perception of morphology is affected by viewing angles and sensitivity. Upper row: with the six angles in the model fixed, the viewing angle is changed from each image to the next by 15° of i and 15° of P.A. together. Lower row: each image is modified from the one above so that the faintest pixels below one-third of the peak brightness are cut off. Brightness levels are shown in linear scale.

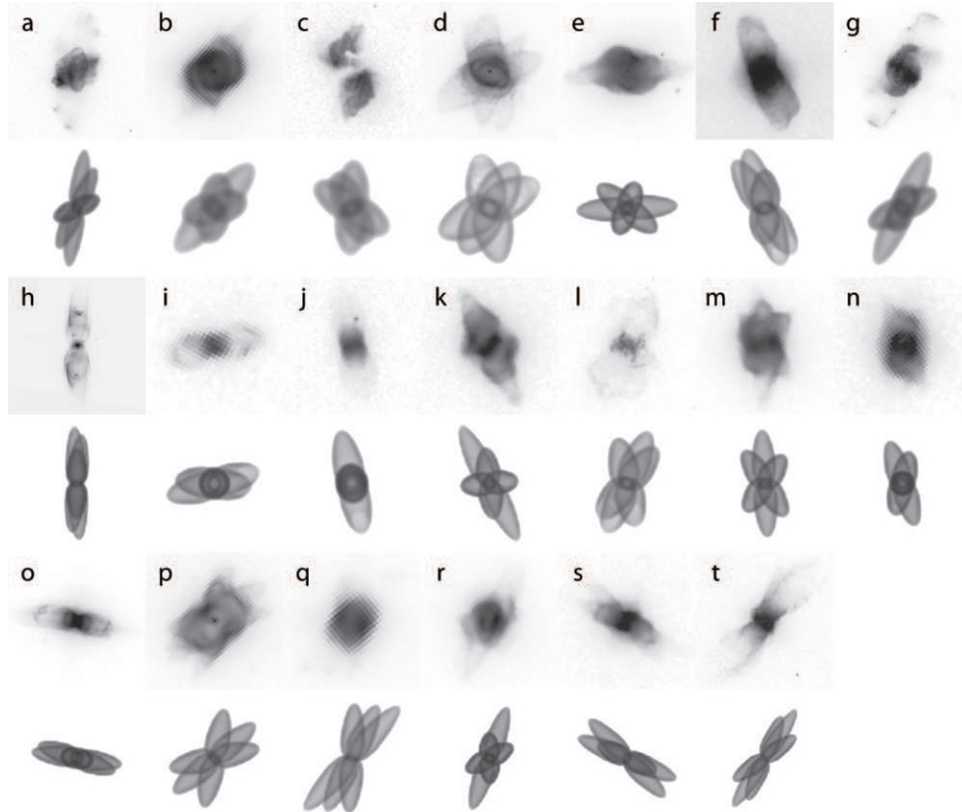


Figure 3. Comparison of the 20 observed images (those with an index letter), each with its corresponding modeled image (the one right below each observed image). Brightness levels are in log scale. North is up and east is to the left. Refer to Table 2 for the object data. The angular sizes and brightness levels of the objects are not the same.

4.4. Individual Objects

Details of each object in Figure 3 are given below. Here, we try to relate the observed morphological features to the 3D model.

(a) *IRAS 05028+1038* (J 320, PN G190.3-17.7) was classified as a Type II low-excitation PN (Harman et al. 2004) with central star effective temperature $T_{\text{eff}} = 85,000$ K and mass $M_{\text{CS}} = 0.79 M_{\odot}$ (McCarthy et al. 1997). It was described as a “poly-polar” PN with surrounding knots distributed in a point-symmetric pattern (Harman et al. 2004). The *HST* image clearly shows two knots, one to the north and one to the south, aligned not exactly in the direction of the central parts. In our model, we align the two pairs of lobes in the direction of the knots and

align the remaining one with the central lobes in the NW–SE direction. Knots are regarded as higher order properties that can be represented by enhancing densities at the tips, or as results due to sensitivity (see Section 4.2). According to Harman et al. (2004), there is one more knot farther to the west. This may be related to our third pair.

(b) *IRAS 07172-2138* (M1-12, PN G235.3-03.9) has closed collimated pairs of lobes in a point-symmetric shape (Sahai et al. 2011). The central region is due to two overlapping pairs and the extended features in the NW–SE direction are explained as the third pair.

(c) *IRAS 10197-5750* (Hen 3-404, OH 284.2-0.8, Roberts 22) was described as a bipolar DUPLEX (DUst-Prominent Longitudinally EXTended) nebula with an A2 I central star by

Table 2
Information and Parameters of the 20 PNe

	IRAS Name	Data Set	i_1°	P.A. $_1^\circ$	i_2°	P.A. $_2^\circ$	i_3°	P.A. $_3^\circ$	θ_{\min}°	$\theta_{\text{med}}^\circ$	θ_{\max}°
a	05028+1038	U39H1301B	90	-8	48	-25	22	-64	33.1	44.8	77.9
b	07172-2138	U5HH0502B	16	-75	17	-10	33	-41	17.6	20.0	21.7
c	10197-5750	U3B30201B	26	-2	20	24	23	57	12.0	12.0	23.7
d	10214-6017	U35T1407B	22	11	23	-62	21	-30	12.1	14.6	26.3
e	15015-5459	U35T2905B	37	87	17	-21	21	40	19.0	33.5	51.7
f	16409-1851	U5HH3102B	20	0	36	17	32	33	9.8	18.0	18.7
g	16585-2145	U47B0201B	48	-25	25	-63	14	-25	16.0	31.2	33.4
h	17028-1004	U42I0202B	30	0	55	2	45	-6	11.7	15.5	25.1
i	17156-3135	U6MG5001B	20	85	27	-74	0	0	11.0	20.1	27.1
j	17296-3641	U6MG4801B	3	18	31	12	6	9	3.0	24.5	27.4
k	17389-2409	U6MG1501B	50	26	18	-84	24	7	28.2	29.6	46.2
l	17410-3405	U6MG3101B	25	-40	32	-23	25	12	10.5	17.7	21.6
m	17496-2221	U5HH6902B	40	3	23	-35	27	33	20.6	25.7	27.3
n	17549-3347	U6MG3601B	0	0	31	18	22	-14	16.6	21.6	31.2
o	17567-3849	U5HH1302B	41	82	35	71	10	79	8.5	25.1	30.3
p	18022-2822	U35T2105B	37	-12	39	-50	33	-77	17.5	23.3	36.1
q	18039-2913	U5HH4103B	41	-3	45	-26	58	-42	16.0	18.4	34.0
r	18430-1430	U59B0301B	21	-62	52	-19	20	0	20.5	33.2	38.4
s	19431+2112	U59B0704B	51	44	50	67	27	65	17.8	23.5	27.7
t	20090+3715	U39H3601B	50	-22	40	-55	80	-33	25.1	31.6	43.9

Notes. The order of pairs 1, 2, and 3 is arbitrary. θ (minimum, median, or maximum) refers to the separation angles between pairs.

Ueta et al. (2007). Fluorescence-induced H₂ emission, characteristic of young PNe, has been detected (García-Hernández et al. 2002). It is also associated with intense OH maser emission (Allen et al. 1980). The equatorial dark lane in the optical image, together with the near- and far-infrared (IR) image, implies the presence of a dusty ring (Allen et al. 1980; Cox et al. 2011), which is not included in our model.

(d) *IRAS 10214-6017* (Hen 2-47, PN G285.6-02.7) was classified as a young, low-excitation PN with cool IR continua and [Ne II] 12.8 μm emission (Volk & Cohen 1990). It has six obvious closed lobes which appear to be axis-symmetric about the equatorial direction. The components in the east side have a larger size than the others, and Sahai (2000) further divided them into two more lobes. The central bright ring (Sahai 2000) is reproduced in the modeled image as the overlapping regions of the three pairs, assuming a simple addition of the column density.

(e) *IRAS 15015-5459* (Hen 2-115, PN G321.3+02.8) has a central star of $T_{\text{eff}} = 27,400$ K and $M_{\text{CS}} = 0.68 M_{\odot}$ (Zhang & Kwok 1993) surrounded by warm dust. In addition to a pair of elongated lobes, there are point-symmetric bulges nearer to the center. Sahai & Trauger (1998) identified a small rhomboidal structure around the central star, which may also be an illusion due to overlapping of the multiple pairs in our model.

(f) *IRAS 16409-1851* (Hen 2-180, PN G000.1+17.2) shows two lobes slightly bent to the west. Such “bending” structures are very difficult to understand by traditional physical ejection models, but can arise naturally in this simulation: the bent lobes seen at the west side belong to two pairs of symmetric lobes but their counterparts in the east are significantly fainter. It has a narrow bright waist (Sahai et al. 2011), which is again a possible consequence of superposition of multiple lobes.

(g) *IRAS 16585-2145* (IC 4634, PN G000.3+12.2) has a curious shape consisting of an S-shape main nebula with extended S-shape bow-shock structures studied by Guerrero et al. (2008). In the central region, an inner shell is hidden roughly aligned with the main axis and knots are found along the bow-shock features (Guerrero et al. 2008). According to Schwarz (1993), the central part exhibits both red- and blue-shifted features on the same side along the main axis, suggesting

the presence of a fast precessing collimated outflow with time-dependent velocity for shaping the nebula. The S-shape point-symmetric structure of the nebula can be explained by two overlapping bipolar lobes and the observed S-shape can be reproduced by non-uniform density distribution along the azimuthal angle of the lobes.

(h) *IRAS 17028-1004* (Butterfly Nebula, M 2-9, PN G010.8+18.0) has highly collimated open-ended lobes with skirt-like structures (Sahai et al. 2011). Bright knots, or ansae, are found along the long axis, and possibly formed at the head of an early jet (Soker 1990). The proper motions of the dusty blobs much farther from the main nebula were studied by Corradi et al. (2011). Their work postulated a rotating ionizing beam to explain the ionized gas emission phenomenon in this nebula, and supported the idea that the appearance of multiple lobes was the result of an excitation gradient. However, considering that other nebulae with similar apparent morphology may not have been studied in as much detail as M 2-9 to reveal the physical properties, we present the model here to suggest an alternate possible choice. The modeled image suggests that the fork-like ends of the main lobe can be geometrically reproduced by two pairs of lobes, and the ansae (knots) are at the interacting points of the three pairs. There are fine structures such as arcs not included here. In addition, the lobes are more likely to be open-ended (see Section 5.1).

(i) *IRAS 17156-3135* (PN G354.5+03.3) In low dynamic range images, the nebula has the typical shape of a bipolar nebula. The *HST* image reveals another pair of bipolar lobes with an axis aligned at an angle with respect to the primary bipolar lobes. We place the third pair of bipolar lobes pole-on in order to produce the circular feature at the center. Given three pairs of lobes, it would not be uncommon that one pair would lie close to perpendicular to the plane of the sky.

(j) *IRAS 17296-3641* (PN G351.9-01.9) has an inner bubble inside the main bipolar lobe pair (Sahai et al. 2011). Considering the brightness difference between the central part and the lobes, we set two pairs as nearly pole-on.

(k) *IRAS 17389-2409* (Hen 2-267, M 2-14, PN G003.6+03.1) is a point-symmetric PN with bulges. The apparent shape is

similar to IRAS 15015-5459, but with a bright waist that is not perpendicular to the largest pair of lobes.

(l) *IRAS 17410-3405* (Hen 2-271, M 3-14, PN G355.4-02.4) is an asymmetric PN with apparently more bubbles in the SE side than the NW side. The $H\alpha$ brightness peaks at the central region and drops slowly outward. The NW bubbles are fainter and not as clearly seen as the SE ones. This asymmetry can be due to non-uniform brightness distributions on the two sides, or can be the result of circumstellar dust extinction. Besides the three pairs, there is another small bubble in the equatorial direction.

(m) *IRAS 17496-2221* (Hen 2-299, M 1-31, PN G006.4+02.0) has a peculiar hexagonal shape that can be reproduced by three pairs of bipolar lobes, with a pair near the plane of the sky representing the long axis of the nebula. The bright waist represents the overlapping central parts of the three pairs of lobes.

(n) *IRAS 17549-3347* (Hen 2-313, PN G357.1-04.7) The central part of this nebula has a circular shape which is considered to be a pair of nearly pole-on lobes. The more extended structure has a pointed S-shape.

(o) *IRAS 17567-3849* (Hen 2-320, PN G352.9-07.5) has a brighter, shorter pair of lobes and two narrower, longer pairs described as “shoulders” by Dennis et al. (2009). These authors suggest that this structure can be produced by bow shocks in their magnetohydrodynamic nested-wind simulations. More extended collimated “nose cones” have also been found. Such double “inner” and “outer” bipolar lobes can be naturally explained by a multipolar structure as seen in the simulated image.

(p) *IRAS 18022-2822* (Hen 2-339, M 1-37, PN G002.6-03.4) has three pairs of lobes distributed in a point-symmetric manner. An arc-like feature to the north is believed to be part of a halo (Sahai et al. 2011). The central part seems to be hollow and a bright star can be seen. This classic multipolar structure can be reproduced by three pairs of bipolar lobes almost on the plane of the sky.

(q) *IRAS 18039-2913* (Hen 2-346, PN G002.1-04.2) exhibits faint extensions around a bright irregular center. The close-ended barrel recorded by Sahai et al. (2011) probably refers to the center. Three bullet-like features can be seen in the SW part and there are faint lobes in the opposite direction. The three lobes in our model image point to these features but fail to reproduce the central barrel. An extra component may be needed.

(r) *IRAS 18430-1430* (M 1-61, PN G019.4-05.3) has one pair of narrow lobes stretching out from the point-symmetric central part which is possibly another two pairs of lobes.

(s) *IRAS 19431+2112* (Hen 2-447, PN G057.9-01.5) has a bright waist and point-symmetric lobes. The shape of two lobes is more obvious in the NE direction. Knots and filaments were identified (Cuisinier et al. 2005).

(t) *IRAS 20090+3715* (Hen 2-456, NGC 6881, PN G074.5+02.1) has a complicated morphology. Kwok & Su (2005) found four pairs of rings in the multipolar lobes aligned with one pair of lobes, and three rings at the waist aligned to another lobe pair. Guerrero & Manchado (1998) identified a loop to the SE of the main nebula, almost perpendicular to the major axis. The H_2 image shows a much more extended size than the optical one, and the lobe to the NW is even larger than its counterpart, turning into an irregular shape (Ramos-Larios et al. 2008). On the other hand, the 6 cm radio morphology is more elongated in the equatorial direction (Aaquist & Kwok 1990), and only images the region with the highest emission measure. Our model can simulate the multipolar lobes but not the central bright region.

5. DISCUSSIONS

PNe have many different morphological features which are often attributed to different physical regions created by separate physical processes. Our models suggest that many of the observed features can be explained by a single, unified model. Of the bright tori seen in many PNe, some are due to real volume density enhancements, but some probably represent the overlapping region of different lobes. Simulations similar to the one presented here can sort out the “false tori” percentage in the whole PN population. The point-symmetric S-shape morphology can be explained by nearly aligned pairs of lobes. Ansaes may be the tips of unseen lobes. The double inner–outer bipolar lobes can arise from overlapping multipolar lobes. Due to the long path length, a pair of near pole-on bipolar lobes can easily be mistaken for a torus, as in the case of NGC 6720 (Kwok et al. 2008). The observed images of PNe can be successfully modeled with a very simple multipolar model. The model lobes have no density variation (either radial or azimuthal) and all three lobes have identical shapes and sizes. There is no inclusion of the effects from dust extinction, which can make the front lobes brighter and the back lobes fainter.

5.1. The Shape of the Lobes

The shapes of the lobes reflect the dynamical history of the outflows and the interactions among outflows. Assuming a collimated fast outflow from the central star, the shapes of the lobes are defined by the interaction between this fast outflow and the ambient circumstellar materials, e.g., the remnant of the AGB wind. At a later stage of development, the fast outflow may break out of the circumstellar envelope and change into an open-ended shape.

The lobes are set to be close-ended in our model. The difference between close- and open-ended lobes is easily identified, even in a projected image, unless the lobe is tilted almost pole-on. This can be seen by comparing Figures 1 and 4. Moreover, the identification of multiple lobes does not depend on this factor. Figure 5 shows another example of the closed-lobed model with a different lobe shape for comparison, described by the equation $r = \cos \theta$ in spherical coordinates. Compared to Figure 1, Figure 5 shows greater deviations from the real PN images. In fact, lobes with larger opening angles have a higher chance of interacting with each other and producing more complicated shapes.

5.2. The Number of Pairs

In general, “multipolar” means having more than one pair of lobes, and is not confined to objects with three pairs. For the objects chosen, at least three pairs are obviously seen, and the number three is also commonly found in the literature (e.g., NGC 7027 by Nakashima et al. 2010; NGC 6644 by Hsia et al. 2010; and NGC 7026 by Clark et al. 2012). It is possible that there are more than three pairs (e.g., IRAS 19024+0044 by Sahai et al. 2005; and NGC 5189 by Sabin et al. 2012), but adding more pairs means adding more parameters; at this stage, we hope to keep the number of parameters to a minimum. The fourth pair is usually not as obvious as the other three. For IRAS 19024+0044, the fourth pair almost overlaps with another one, which could be due to projection effects, or the two components may have been in the same lobe produced by perturbations. At least three is enough to describe such objects. The less obvious lobes are therefore treated as higher ordered structures.

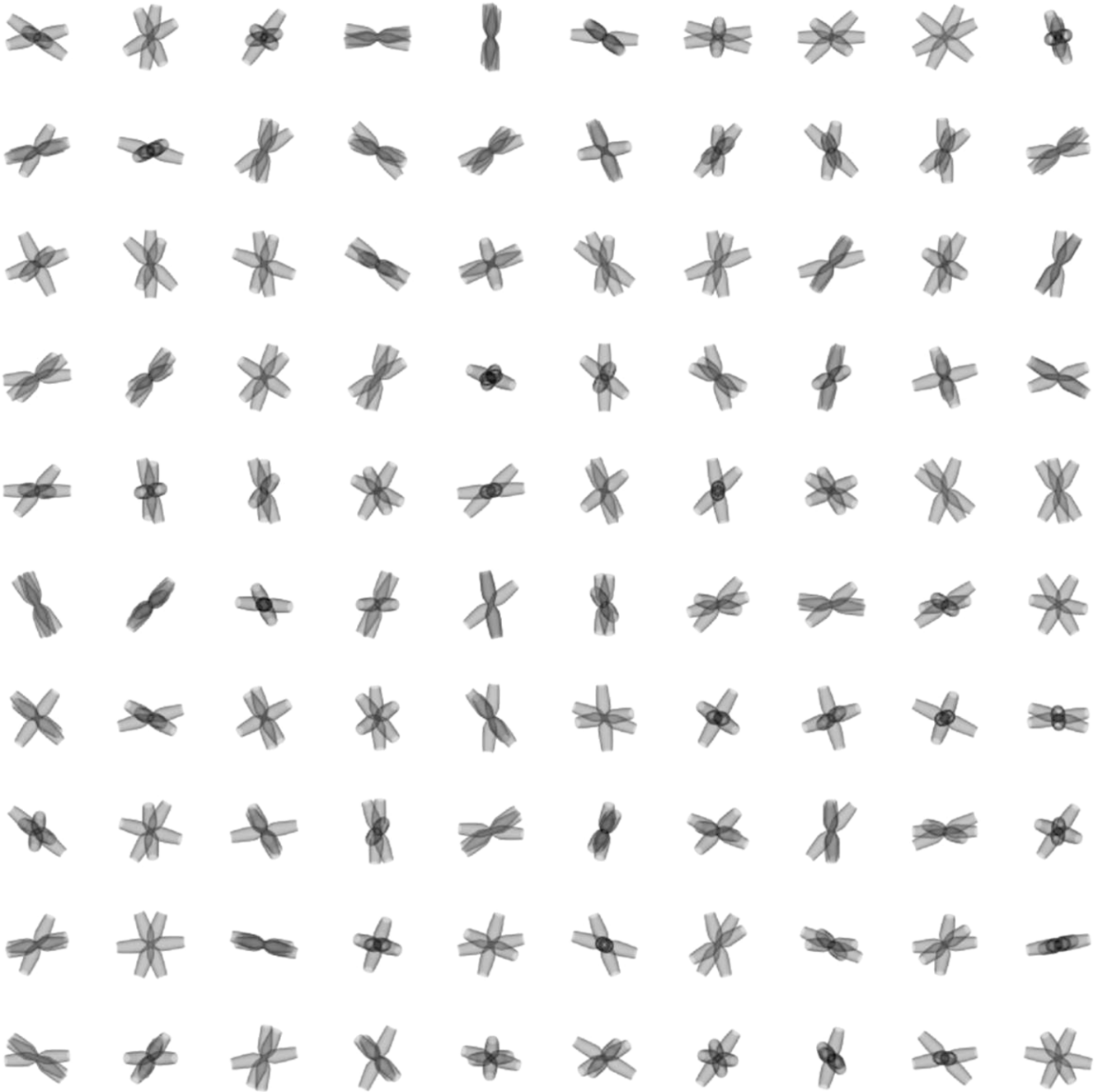


Figure 4. Same as Figure 1, but with open-ended lobes.

5.3. Lobes: Same Length or Not?

By looking at a 2D image, it is hard to tell whether the lobes have the same length or not without knowing the inclination angles. One of the possible ways to predict the length ratios is to compare the brightness of various lobes. If the brightness is simply proportional to the square of the column density, and if the volume density is constant everywhere, then the lengths along the LOS can be calculated. As shown in the modeled images, lobes that are more pole-on look brighter. However, infrared images confirmed the existence of denser tori in some pPNe, e.g., IRAS 16594-4656 (Volk et al. 2006) and IRAS 17441-2411 (Volk et al. 2007), which may be optically thick in the visible light. Even if the central bright ionized region is optically thin in PNe, it is still hard to tell whether it is a dense, short component or a less dense but longer one.

Another way to determine the actual length ratios is from kinematic information. Lobes with the same lengths are likely to be produced simultaneously and with the same outflow velocities. Assuming constant expansion velocities, the ratio of the apparent size to the velocity component along the LOS should be able to indicate the projected angles of each lobe. Take i to be the angle between the tilted lobe and the LOS. The apparent angular size r_{app} is related to the real size r_{real} by a factor of $\sin i$, while the LOS velocity and real velocity are linked by $\cos i$:

$$r_{\text{app}} = r_{\text{real}} \sin i, \quad (2)$$

$$v_{\text{LOS}} = v_{\text{real}} \cos i. \quad (3)$$

To find r_{real} and v_{real} , one must know i . For a single pair of lobes, it is hard to deduce i , but with multiple lobes, the ratios

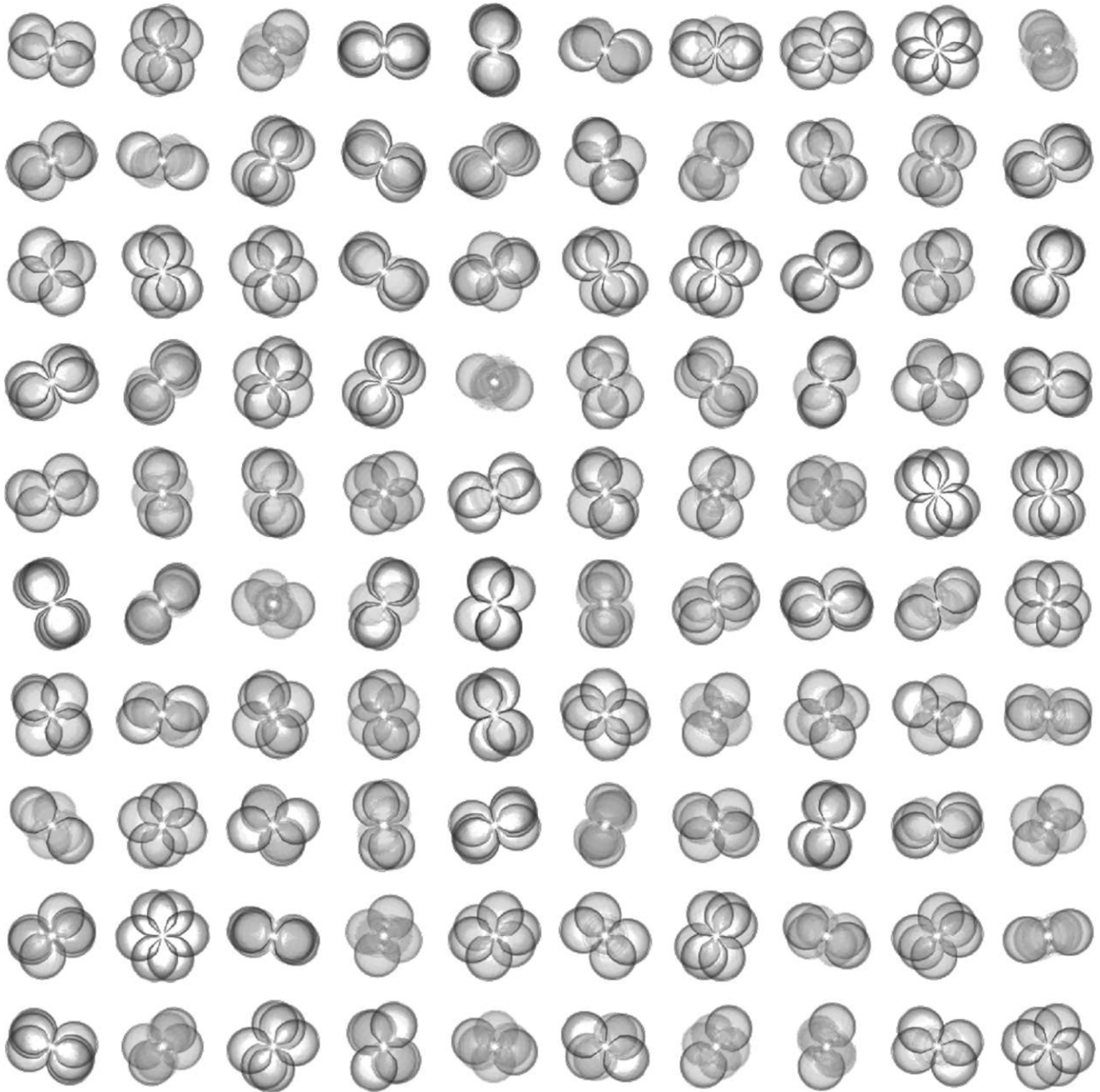


Figure 5. Same as Figure 1, but with a different lobe shape. See the text for the descriptions.

between two pairs can eliminate the real quantities, based on the assumption of the same r_{real} and the same v_{real} for all lobes. On the other hand, for lobes of different lengths, deducing the true length ratios from 2D images is more uncertain.

A detailed morpho-dynamical study is the key to a reliable determination of the real shape of a PN. The kinematic information is the only way to “see” the third dimension in the 2D sky plane. In addition to the estimation of the length of the lobes, visually overlapping lobes can also be distinguished from their radial velocities because they are tilted with different angles to the LOS.

5.4. Formation and Evolution of Multipolar Lobes

Although the formation mechanism of multipolar lobes is not confirmed, the theory of a precessing jet is more frequently

adapted than coeval mass outflows. As in the case of bipolar PNe, a binary system is believed to be a driving source. The jet changes direction due to the additional velocity component of the progenitor’s orbital motion (Velázquez et al. 2012, and references therein) and describes a spiral trajectory, which can be traced by motions of water maser spots in an earlier phase (Imai et al. 2002). It has been suggested that the number of lobes is proportional to the ratio of the jet precession period to the orbital period, which depends on the masses of the two objects in the binary system (Velázquez et al. 2012). In this hypothesis, the angles between adjacent lobes should be equal, and all the lobes should be confined to a cone swept out by the jet. Compared with our random direction simulation, this hypothesis puts more constraints on the lobe orientations, and therefore projection effects are expected to be more significant:

the lobes have a smaller angular distance to each other and thus a higher chance of overlap in the projected images. Furthermore, if the precessing jet mechanism is true, then the S-shape structure found in some PNe is just a variation of the multipolar scenario, where the “lobes” are so close to each other that a continuous S-shape is seen instead of discrete lobes.

In each lobe, expansion components in the direction perpendicular to the lobe axis push out the lobe walls. Eventually, the lobes interact with each other, combine into a larger lobe, or become less obvious because of the fusion of the walls. As a result, the phenomenon of multipolar lobes is more commonly observed in pPNe or young PNe. If the existence of a companion is the only way to produce multipolar outflows, then the total fraction of multipolar PNe can be most easily estimated as the product of the fraction of binary systems in all PN progenitors and the fraction of multipolar outflows onset in these binary systems, scaled by the ratio of survival duration of multiple lobes to the lifetime of a PN. Although the fraction of binary systems directly confirmed in individual PN progenitors is lower than the percentage of multipolar PNe (12%–20%; see Section 1), the overall estimated fraction of binary progenitors is comparable: the close binary fraction might be as high as 12%–21% (Miszalski et al. 2009) or $22\% \pm 9\%$ (Frew & Parker 2010).

6. SUMMARY

From a simple three-bipolar-lobe model, we have shown that many of the observed morphological features of PNe can be successfully reproduced. Morphological features such as “point-symmetric,” “S-shape,” “bending,” “double bipolar lobes,” “knots,” and “ansae” can arise naturally from this model. These simulations confirm the importance of the effects of orientation and sensitivity, as discussed in Kwok (2010). We have also shown that the statistical analysis of morphological classes based on apparent shapes is not a reliable indicator of the true structures of the nebulae.

The reconstruction of the true 3D structure of PNe represents the first step in the identification of the physical processes responsible for the shaping of PNe. Without an accurate picture of the 3D structure, all attempts at physical models are futile.

Further expansion of the model should take into account the density profiles, ionization and radiative transfer treatments, dust extinction, and interaction with the circumstellar and interstellar media. The fourth dimension–temporal evolution is just as important. The 20 PNe presented are barely the tip of the iceberg among the known multipolar PNe, and our simulations suggest that the number of multipolar PNe will keep on rising as the sensitivity and dynamic range of images improve with future observations.

We thank Nico Koning and Wolfgang Steffen for discussions on the use of the SHAPE software. We thank Romano Corradi for useful ideas and comments. The work was supported by a grant awarded to S.K. from the Research Grants Council of the Hong Kong Special Administrative Region, China (Project No. HKU 7031/10P).

REFERENCES

- Aaquist, O. B., & Kwok, S. 1990, *A&AS*, **84**, 229
Aaquist, O. B., & Kwok, S. 1996, *ApJ*, **462**, 813
Allen, D. A., Hyland, A. R., & Caswell, J. L. 1980, *MNRAS*, **192**, 505
Balick, B. 1987, *AJ*, **94**, 671
Balick, B., & Hajian, A. R. 2004, *AJ*, **127**, 2269
Clark, D. M., López, J. A., Richer, M. G., & Riesgo, H. 2012, in *IAU Symp.* 283, *Planetary Nebulae: An Eye to the Future*, ed. A. Manchado, L. Stanghellini, & D. Schönberner (Cambridge: Cambridge Univ. Press), 332
Corradi, R. L. M., Balick, B., & Santander-García, M. 2011, *A&A*, **529**, 43
Corradi, R. L. M., & Schwarz, H. E. 1995, *A&A*, **293**, 871
Cox, N. L. J., García-Hernández, D. A., García-Lario, P., & Manchado, A. 2011, *AJ*, **141**, 111
Cuisinier, F., Moises, A. P., Ferreira, M. L., Rabaça, C. R., & Gonçalves 2005, in *AIP Conf. Proc.* 804, *Planetary Nebulae as Astronomical Tools*, ed. R. Szczerba, G. Stasinska, & S. K. Górný (Melville, NY: AIP), 28
Curtis, H. D. 1918, *Publ. Lick Obs.*, **13**, 55
Dennis, T. J., Frank, A., Blackman, E. G., et al. 2009, *ApJ*, **707**, 1485
Frew, D. J., & Parker, Q. A. 2010, *PASA*, **27**, 129
García-Díaz, M. T., López, J. A., Riesgo, H., et al. 2011, in *Proc. APN5 Conf.*, ed. A. A. Zijlstra, F. Lykou, F. I. McDonald, & E. Lagadec (Manchester: Jodrell Bank Centre for Astrophysics), 87
García-Hernández, D. A., Manchado, A., García-Lario, P., et al. 2002, *A&A*, **387**, 955
Guerrero, M., Miranda, L. F., Riera, A., et al. 2008, *ApJ*, **683**, 272
Guerrero, M. A., & Manchado, A. 1998, *ApJ*, **508**, 262
Harman, D. J., Bryce, M., López, J. A., Meaburn, J., & Holloway, A. J. 2004, *MNRAS*, **348**, 1047
Hsia, C.-H., Kwok, S., Zhang, Y., Koning, N., & Volk, K. 2010, *ApJ*, **725**, 173
Imai, H., Obara, K., Diamond, P. J., Omodaka, T., & Sasao, T. 2002, *Nature*, **417**, 829
Kwok, S. 2007, *Physics and Chemistry of the Interstellar Medium* (Mill Valley, CA: Univ. Science Books)
Kwok, S. 2010, *PASA*, **27**, 174
Kwok, S., Chong, S.-N., Hsia, C.-H., Zhang, Y., & Koning, N. 2010, *ApJ*, **708**, 93
Kwok, S., Chong, S.-N., Koning, N., Hua, T., & Yan, C.-H. 2008, *ApJ*, **689**, 219
Kwok, S., & Su, K. Y. L. 2005, *ApJ*, **635**, 49
López, J. A., Meaburn, J., Bryce, M., & Holloway, A. J. 1998, *ApJ*, **493**, 803
López, J. A., Meaburn, J., & Palmer, J. W. 1993, *ApJ*, **415**, 135
López, J. A., Vázquez, R., & Rodríguez, L. F. 1995, *ApJ*, **455**, 63
Manchado, A., García-Hernández, D. A., Villaver, E., & Guironnet de Massas, J. 2011, in *ASP Conf. Ser.* 445, *Why Galaxies Care About AGB Stars II*, ed. F. Kerschbaum, T. Lebzelter, & B. Wing (San Francisco, CA: ASP), 161
Manchado, A., Stanghellini, L., & Guerrero, M. A. 1996, *ApJ*, **466**, 95
McCarthy, J. K., Méndez, R. H., & Kudritzki, R.-P. 1997, in *IAU Symp.* 180, *Planetary Nebulae*, ed. H. J. Habing & H. J. G. L. M. Lamers (Dordrecht: Kluwer), 120
Meaburn, J., López, J. A., & Richer, M. G. 2008, *MNRAS*, **384**, 497
Miszalski, B., Acker, A., Moffat, A. F. J., Parker, Q. A., & Udalski, A. 2009, *A&A*, **496**, 813
Nakashima, J., Kwok, S., Zhang, Y., & Koning, N. 2010, *AJ*, **140**, 490
Parker, Q., Acker, A., Frew, D. J., et al. 2006, *MNRAS*, **373**, 79
Pascoli, G. 1990a, *A&AS*, **83**, 27
Pascoli, G. 1990b, *A&A*, **232**, 184
Ramos-Larios, G., Guerrero, M. A., & Miranda, L. F. 2008, *AJ*, **135**, 1441
Ruiz, N., Guerrero, M. A., Chu, Y.-H., & Gruendl, R. A. 2011, *AJ*, **142**, 91
Sabin, L., Vázquez, R., López, J. A., & García-Díaz, T. 2012, in *IAU Symp.* 283, *Planetary Nebulae: An Eye to the Future*, ed. A. Manchado, L. Stanghellini, & D. Schönberner (Cambridge: Cambridge Univ. Press), 490
Sahai, R. 2000, *ApJ*, **537**, 43
Sahai, R. 2002, *RevMexAA*, **13**, 133
Sahai, R., Morris, M. R., & Villar, G. G. 2011, *AJ*, **141**, 134
Sahai, R., Sánchez Contreras, C., & Morris, M. 2005, *ApJ*, **620**, 948
Sahai, R., & Trauger, J. T. 1998, *AJ*, **116**, 1357
Schwarz, H. E. 1993, in *Proc. 2nd ESO/CTIO Workshop, Mass Loss on the AGB and Beyond*, ed. H. E. Schwarz (Garching: ESO), 223
Schwarz, H. E., Corradi, R. L. M., & Stanghellini, L. 1993, in *IAU Symp.* 155, *Planetary nebulae*, ed. R. Weinberger & A. Acker (Dordrecht: Kluwer), 214
Soker, N. 1990, *AJ*, **99**, 1869
Stanghellini, L., Corradi, R. L. M., & Schwarz, H. E. 1993, *A&AS*, **279**, 521
Steffen, W. 2011, *IEEE Trans. Vis. Comput. Graphics*, **17**, 454
Ueta, T., Murakawa, K., & Meixner, M. 2007, *AJ*, **133**, 1345
Velázquez, P. F., Raga, A. C., Riera, A., et al. 2012, *MNRAS*, **419**, 3529
Volk, K., & Cohen, M. 1990, *AJ*, **100**, 485
Volk, K., Hrivnak, B. J., Su, K. Y. L., & Kwok, S. 2006, *ApJ*, **651**, 294
Volk, K., Kwok, S., & Hrivnak, B. J. 2007, *ApJ*, **670**, 1137
Wang, M.-Y., Hasegawa, T. I., & Kwok, S. 2008, *ApJ*, **673**, 264
Yung, B. H. K., Nakashima, J., Imai, H., et al. 2011, *ApJ*, **741**, 94
Zhang, C. Y., & Kwok, S. 1993, *ApJS*, **88**, 137