

## Anti-Inflammatory Effects of Naringin in Chronic Pulmonary Neutrophilic Inflammation in Cigarette Smoke-Exposed Rats

Yi-Chu Nie,<sup>1</sup> Hao Wu,<sup>2</sup> Pei-Bo Li,<sup>1</sup> Yu-Long Luo,<sup>1</sup> Kang Long,<sup>1</sup> Li-Ming Xie,<sup>1</sup>  
Jian-Gang Shen,<sup>2</sup> Wei-Wei Su<sup>1</sup>

<sup>1</sup>Key Laboratory of Gene Engineering of the Ministry of Education and Guangdong Key Laboratory of Plant Resources, School of Life Sciences, Sun Yat-sen University, Guangzhou, China.

<sup>2</sup>School of Chinese Medicine, The University of Hong Kong, Pokfulam, Hong Kong, China.

**ABSTRACT** Naringin, a well-known flavanone glycoside of grapefruit and citrus fruits, was found to be as an effective anti-inflammatory compound in our previous lipopolysaccharide-induced acute lung injury mouse model via blockading activity of nuclear factor  $\kappa$ B. The current study sought to explore the anti-inflammatory effects of naringin on chronic pulmonary neutrophilic inflammation in cigarette smoke (CS)-induced rats. Seventy Sprague-Dawley rats were randomly divided into seven groups to study the effects of CS with or without various concentrations of naringin or saline for 8 weeks. The results revealed that naringin supplementation at 20, 40, and 80 mg/kg significantly increased body weight of CS-induced rats as compared to that in the CS group. Moreover, naringin of 20, 40, and 80 mg/kg prevented CS-induced infiltration of neutrophils and activation of myeloperoxidase and matrix metalloproteinase-9, in parallel with suppression of the release of cytokines, such as tumor necrosis factor- $\alpha$  and interleukin-8 (IL-8). IL-10 in bronchoalveolar lavage fluid was significantly suppressed after CS exposure, but dose dependently elevated by naringin. The results from hematoxylin and eosin staining revealed that naringin dose dependently reduced CS-induced infiltration of inflammatory cells, thickening of the bronchial wall, and expansion of average alveolar airspace. In conclusion, our data suggest that naringin is an effective anti-inflammatory compound for attenuating chronic pulmonary neutrophilic inflammation in CS-induced rats.

**KEY WORDS:** • anti-inflammatory effect • chronic pulmonary neutrophilic inflammation • cigarette smoke • naringin • rats

### INTRODUCTION

CIGARETTE SMOKING IS the most important risk factor for the development of inflammatory lung diseases, such as chronic obstructive pulmonary disease (COPD), which is characterized by chronic pulmonary inflammation in the lungs with a progressive and irreversible destruction of small airways and parenchyma.<sup>1,2</sup> It is well established that neutrophils adhesion, infiltration, and angiogenic processes are the important steps in the inflammatory process stimulated by cigarette smoke (CS), which result from the production and secretion of many signaling molecules, such as cytokines, chemokines, and lipid-derived inflammatory mediators.<sup>3</sup>

The effects of CS exposure have been clearly demonstrated in large clinical studies, CS-induced rodent models, and *in vitro* cell models.<sup>4–8</sup> It was demonstrated that oxidative stress caused by CS-exposure increases inflammatory

cell influxes to the lung, which is followed by lipid peroxidation and increases in proinflammatory cytokine, such as tumor necrosis factor- $\alpha$  (TNF- $\alpha$ ).<sup>7</sup> Moreover, interleukin-8 (IL-8) and myeloperoxidase (MPO), predominantly produced by neutrophils, were found to be elevated in human bronchial epithelial cells after CS-exposure,<sup>9</sup> whereas anti-inflammatory cytokine of IL-10 was reduced in patients with bronchial asthma, COPD, and in smokers.<sup>10</sup> Matrix metalloproteinase-9 (MMP-9), which is the most elastolytic of the MMPs and predominantly produced by macrophages, was significantly increased in the lungs of rats induced by CS and dose dependently attenuated by a selective phosphodiesterase 4 (PDE4) inhibitor, Z1-n-91.<sup>11</sup> Thus, the CS-exposure model in rodents might be useful for investigating anti-inflammatory effects of a novel drug that attenuate chronic pulmonary inflammation.

Naringin (4',5,7-trihydroxy-flavonone-7-rhamnoglucoside), a well-known flavanone glycoside of grapefruit and citrus fruits, has been reported to exhibit antioxidative effects and inhibit lipid peroxidation in biological membranes.<sup>12–13</sup> Moreover, growing evidence has indicated that naringin exerts anti-inflammatory effects both *in vitro* and *in vivo*.<sup>12,14–16</sup> It is well established that naringin significantly prevented lipopolysaccharide (LPS)-induced endotoxic shock in mice and

Manuscript received 6 March 2012. Revision accepted 2 July 2012.

Address correspondence to: Wei-Wei Su, Ph.D., Key Laboratory of Gene Engineering of the Ministry of Education and Guangdong Key Laboratory of Plant Resources, School of Life Sciences, Sun Yat-sen University, No. 135, Xingangxi St., Guangzhou 510275, PR China, E-mail: lssww@126.com or Jian-gang Shen, Ph.D., School of Chinese Medicine, The University of Hong Kong, 10 Sassoon Road, Pokfulam, Hong Kong Special Administrative Region, China, E-mail: shenjg@hku.hk

production of NO in RAW 264.7 macrophage cells.<sup>15</sup> Furthermore, our previous study investigated the anti-inflammatory effects of naringin in an acute pulmonary inflammatory mouse model with LPS-induced acute lung injury, and demonstrated that naringin significantly attenuated LPS-induced infiltration of inflammatory cells and the release of proinflammatory cytokines via suppressing activation of the nuclear factor  $\kappa$ B (NF- $\kappa$ B).<sup>16</sup> However, there is no information regarding the effects of naringin on chronic pulmonary neutrophilic inflammation induced by CS, which appears to not be affected by treatment with glucocorticoids as reported in previous studies. Naringin is an effective cAMP-specific PDE4 inhibitor,<sup>17</sup> and accumulating preclinical and clinical evidence suggests that selective PDE4 inhibitors are effective on inhibition of pulmonary inflammation and emphysema in COPD animal model and patients, respectively.<sup>11</sup> Thus, the main goal of the current study was to evaluate the anti-inflammatory activity of naringin on chronic pulmonary neutrophilic inflammation in CS-induced rats.

## MATERIALS AND METHODS

### Animals

Seventy male and female Sprague-Dawley rats, weighting between 190–230 g, were obtained from the Guangdong Medical Laboratory Animal Center (Guangdong, China). All rats were housed in a temperature ( $22^{\circ}\text{C} \pm 2^{\circ}\text{C}$ ) and humidity-controlled room with free access to both fresh water and standard laboratory food. All experimental procedures were approved by the Animal Care and Use Committee of the School of Life Sciences, Sun Yat-sen University (No. 2011082102).

### Reagents

The commercial nonfiltered cigarette contains 12 mg tar and 1.2 mg nicotine per cigarette (trade name: Ye Shu, purchased from the Guangdong Tobacco Industrial Co. Ltd., Guangdong, China). Naringin was extracted by our laboratory (extracted from *Citrus grandis* Tomentosa by water per ethanol extraction, and purified by 1–10 recrystallizations to obtain a purity  $>98.3\%$  as determined by peak area normalization). Rat TNF- $\alpha$ , IL-8, IL-10, and MMP-9 ELISA Kits were purchased from R&D Corporation (R&D Systems, Inc., Minneapolis, MN, USA). MPO and bicinchoninic acid (BCA) assay kits were purchased from Jiancheng (Nanjing, China).

### Dosage rationale of naringin

*C. grandis* Tomentosa is a medicinal and edible plant that contains naringin of 5% to 20% in the dry peel. According to Chinese Pharmacopoeia, the daily usage and dosage of dry peel of *C. grandis* Tomentosa is 3–6 g, which means the daily intake of naringin for rats is 13.5–108 mg/kg. So naringin dosages from 5 to 80 mg/kg were designed in the current study.

### Apparatus

The smoking apparatus consists of three major parts, including a metal chamber with a glass door, a cigarette

burning with inhalation apparatus, and a ventilation apparatus on the top of the chamber. A 100 cm (length)  $\times$  60 cm (width)  $\times$  60 cm (height) metal chamber separated into two layers with sufficient space for exposing 24 rats at a time. The cigarette burner contained 12 cigarette holders, a plastic wye injection casing, and a 300-mL glass injector, which could burn up 12 cigarettes in 3 min at a time and inject CS into the chamber by manual control of one-way valves. The ventilation apparatus would pump out all of the CS in the chamber within 15 min after exposure. During the experiment, temperature in the chamber was kept between  $19^{\circ}\text{C}$ – $23^{\circ}\text{C}$  with the help of a condensation interlayer, carbon monoxide was controlled between 310–380 ppm, carbon dioxide was controlled between 10415–11406 ppm, oxygen was kept between 19.2%–20.5%, and total suspended particles was kept between 70 and 110 mg/m<sup>3</sup>.

### Animal administration and modeling procedures

Rats were randomly divided into the following seven groups and dealt with the following steps, respectively ( $n = 10$ ).

Group a: Con group. Animals were placed into the same type of apparatus as described in CS-induced group, and exposed to fresh air instead of CS for 8 weeks.

Group b: CS group. Animals were placed into the chamber and exposed to successive periods of CS for 1 h in the morning and 1 h in the afternoon, 7 days a week. The amount of cigarette exposure was increased as follows: 3 cigarettes on the 1st day, 7 cigarettes on the 2nd day, 12 cigarettes on the 3rd to 5th day (30 min at each time), and 12 cigarettes on the 6th day (1 h at each time) to the end of 8 weeks.

Group c: CS+Nar1 group, Group d: CS+Nar2 group, Group e: CS+Nar3 group, Group f: CS+Nar4 group, and Group g: CS+Nar5 group. Rats in these groups were exposed to CS as described in the CS group above. One hour before the first CS exposure on each day, animals were intragastrically administered with naringin of 5, 10, 20, 40, or 80 mg/kg, respectively.

On each 7th day, bodyweights of rats in each group were weighed by electronic balance after 12 h fasting. Feed intake in each group was weighed by the weight loss method on the morning of every day.

### Analysis of immunocytes and cytokines in bronchoalveolar lavage fluid

Fourteen hours after the last exposure to CS, animals were anesthetized with chloral hydrate (3.5%) and sacrificed by heart bloodletting using vacuum tubes from the left side of heart. Trachea and chest of rats were surgically exposed, and then a gavage needle (No. 16) was inserted into the trachea. The left lung lobes were ligated, while the right lung lobes were used for lavage. The bronchoalveolar lavage fluid (BALF) was performed as previously reported.<sup>16</sup> After centrifuging the BALF samples for 10 min (3000 g,  $4^{\circ}\text{C}$ ), the sediment cells were resuspended in 0.5 mL PBS and counted by ABX MICROS 60. The supernatants were stored at  $-20^{\circ}\text{C}$  until used for analysis of TNF- $\alpha$ , IL-8, and IL-10 according to the manufacturer's instructions.

### Analysis of MPO and MMP-9 activities in lung tissue

Lung MPO activity was measured using the colorimetric method with a UV-VIS spectrophotometer (TU-1901, Purkinje General Instrument Co., Ltd., Beijing, China), using a commercial MPO assay kit. Total protein was extracted from the lung tissue by the RIPA lysate (Beyotime, Shanghai, China) and measured with the BCA assay kit according to standard steps. Then, the content of MMP-9 in the tissue lysate was analyzed by ELISA.

### Lung histological examination by hematoxylin and eosin staining

The left lung lobes and the remaining trachea of rats were then removed and perfusion fixed via a tracheal cannula with 10% neutral formalin at a hydrostatic pressure of 20 cm H<sub>2</sub>O. After 10 min, the trachea was ligated and the lung was immersed in 10% neutral formalin for 7 days. After fixation, the left lung lobes were imbedded in paraffin wax and cut into sections of 3–4 μm, and then suitable sections were selected and stained with hematoxylin and eosin (H&E) for histological examination. Slides were scanned with a Mirax Scan (Carl Zeiss MicroImaging GmbH, Göttingen, Germany) at ×100 and ×400 magnifications. At least two nonconsecutive slides per block were analyzed for influx of inflammatory cells, average alveolar airspace, and thickness of bronchial wall by corresponding Mirax Viewer software as previously described.<sup>18</sup>

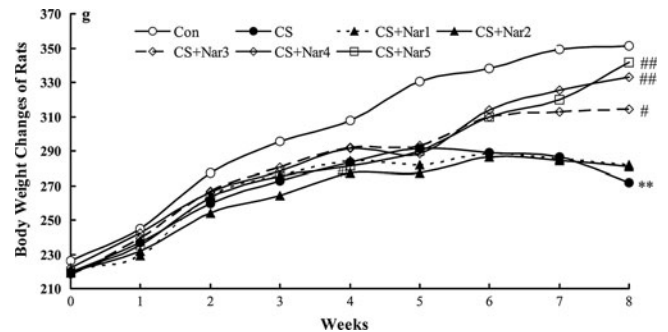
### Statistical analysis

Unless otherwise stated, data are presented as mean ± S.D. Analysis of variance was used to compare experimental animals to control group, while comparisons between multiple groups were performed using the Tukey's Multiple Comparison test. For all experiments,  $P < .05$  was taken as statistically significant.

## RESULTS

### Effect of naringin on CS-induced body weight changes of rats

As shown in Figure 1, although the initial body weight was similar between all groups, the rats in the CS group weighed significantly less than those rats in the Con group after the 8-week exposure period. After the 8-week exposure, the body weight of rats in the Con group increased to  $351.4 \pm 81.7$  g, whereas the CS group rats enhanced to  $271.7 \pm 65.4$  g only, which means the loss ratio of body weight was 60.7% as compared with the Con group. The body weight of CS-induced animals treated with 5 and 10 mg/kg naringin showed no significant differences as compared to that in the CS group. However, body weight of CS-induced rats treated with naringin of 20, 40, and 80 mg/kg elicited a pronounced increase as compared to that in the CS group after 8 weeks of CS exposure.



**FIG. 1.** Effect of naringin on cigarette smoke (CS)-induced body weight changes of rats. Rats were repeatedly exposed to CS or fresh air (control [Con] group) for 8 weeks, the body weight of rats was weighed on each 7th day after 12-h fasting. Data are given as mean ( $n=8-10$ ; value of S.D. is omitted). Significant differences were found: \*\* $P < .01$  compared with the control group; # $P < .05$ , ## $P < .01$  compared with the CS group.

### Effect of naringin on CS-induced influx of leukocytes in BALF of rats

As shown in Table 1, the number of total leukocytes in BALF of CS group rats was significantly increased to 4.0-fold as compared to that in the Con group. Naringin dose dependently attenuated CS-induced influx of leukocytes in BALF. The total leukocytes in BALF of CS-induced rats treated with naringin of 20, 40, and 80 mg/kg elicited a pronounced decrease as compared to that in the CS group after 8 weeks of CS exposure. Moreover, the percentage of neutrophils in the BALF of CS group rats was significantly increased to 2.9-fold as compared to that in the Con group, while percentages of macrophages and lymphocytes partially, but not significantly, decreased suggesting that there is a remarkable chronic pulmonary neutrophilic inflammation after 8 weeks of CS exposure. Naringin of 20, 40, and 80 mg/kg significantly reduced the percentage of neutrophils in BALF of CS-induced rats. As compared with CS group rats, the number of neutrophils, macrophages, and lymphocytes in BALF of rats treated with naringin of 80 mg/kg was significantly decreased by 84.6%, 49.5%, and 61.8%, respectively.

### Effect of naringin on CS-induced release of TNF- $\alpha$ , IL-8, and IL-10 in BALF of rats

Release of inflammatory mediators was additionally determined in BALF. As shown in Table 2, after 8 weeks of CS exposure, the contents of TNF- $\alpha$  and IL-8 in BALF were significantly elevated to 2.9- and 2.1-fold, respectively. Moreover, Naringin dose dependently reduced CS-induced release of TNF- $\alpha$  and IL-8. At the highest tested dose of naringin (80 mg/kg), maximum inhibition for TNF- $\alpha$  and IL-8 was 73.9% and 101.1%, respectively.

Otherwise, content of IL-10 in BALF was markedly decreased by 55.5% after 8 weeks of CS exposure, but dose dependently elevated after treated with naringin. In the group of rats treated with naringin of 80 mg/kg, the content of IL-10 was slightly higher than that in the Con group.

TABLE 1. NARINGIN ATTENUATES CIGARETTE SMOKE-INDUCED INFLUX OF LEUKOCYTES IN BRONCHOALVEOLAR LAVAGE FLUID OF RATS

Group	Dose (mg/kg)	Total leukocytes ( $\times 10^8/L$ )	Differential leukocytes (%)		
			Neutrophils	Mononuclear macrophages	Lymphocytes
Control		1.45 $\pm$ 0.46	12.54 $\pm$ 5.42	50.84 $\pm$ 13.34	29.87 $\pm$ 10.31
CS		5.83 $\pm$ 0.99**	36.13 $\pm$ 19.26**	35.92 $\pm$ 15.85	18.37 $\pm$ 15.69
CS+Nar1	5	5.14 $\pm$ 1.45**	30.89 $\pm$ 9.62**	36.89 $\pm$ 15.43	22.28 $\pm$ 5.85
CS+Nar2	10	4.32 $\pm$ 0.61**	29.21 $\pm$ 14.67*	38.80 $\pm$ 10.16	23.12 $\pm$ 15.37
CS+Nar3	20	3.44 $\pm$ 1.31**.#	21.16 $\pm$ 13.34#	44.23 $\pm$ 15.58	22.97 $\pm$ 18.79
CS+Nar4	40	2.92 $\pm$ 0.49*.*#	18.74 $\pm$ 4.54##	50.50 $\pm$ 13.73	20.83 $\pm$ 6.82
CS+Nar5	80	2.87 $\pm$ 0.37*.*#	16.63 $\pm$ 9.42##	49.55 $\pm$ 17.58	23.68 $\pm$ 12.56

Data are presented as mean  $\pm$  SD ( $n=8-10$ ).

Significant differences were found: \* $P < .05$ , \*\* $P < .01$  compared with normal control group; # $P < .05$ , ## $P < .01$  compared with cigarette smoke (CS) group. Nar1-5, Naringin (5, 10, 20, 40, and 80 mg/kg).

TABLE 2. EFFECTS OF NARINGIN ON CIGARETTE SMOKE-INDUCED RELEASE OF TUMOR NECROSIS FACTOR- $\alpha$ , INTERLEUKIN-8, AND INTERLEUKIN-10 IN BRONCHOALVEOLAR LAVAGE FLUID OF RATS

Group	TNF- $\alpha$		IL-8		IL-10	
	C (pg/mL)	IR	C (pg/mL)	IR	C (pg/mL)	GR
Control	1.97 $\pm$ 0.28		1.78 $\pm$ 0.42		25.4 $\pm$ 0.40	
CS	5.66 $\pm$ 1.02**		3.84 $\pm$ 0.67**		11.3 $\pm$ 1.92**	
CS+Nar1	5.10 $\pm$ 0.74	15.0%	3.21 $\pm$ 0.84#	30.7%	13.7 $\pm$ 1.57	21.2%
CS+Nar2	4.12 $\pm$ 0.64#	41.4%	2.63 $\pm$ 0.48##	58.9%	17.4 $\pm$ 1.31##	54.0%
CS+Nar3	3.50 $\pm$ 0.39##	58.6%	2.30 $\pm$ 0.63##	75.4%	21.8 $\pm$ 1.10##	92.9%
CS+Nar4	3.18 $\pm$ 0.72##	67.2%	2.09 $\pm$ 0.47##	85.0%	27.9 $\pm$ 1.52##	146.9%
CS+Nar5	2.94 $\pm$ 0.53##	73.9%	1.77 $\pm$ 0.92##	101.1%	29.3 $\pm$ 1.62##	159.3%

Data are presented as mean  $\pm$  SD ( $n=8-10$ ).

Significant differences were found: \*\* $P < .01$  compared with normal control group; # $P < .05$ , ## $P < .01$  compared with CS group.

C, contents; IR, inhibition rate; GR, growth rate; IL, interleukin; TNF- $\alpha$ , tumor necrosis factor- $\alpha$ .

TABLE 3. EFFECTS OF NARINGIN ON CIGARETTE SMOKE-INDUCED RELEASE OF MYELOPEROXIDASE AND MATRIX METALLOPROTEINASE-9 IN LUNG TISSUE OF RATS

Group	Dose (mg/kg)	MPO		MMP-9	
		Activation (U/g tissue)	IR	Contents (ng/g protein)	IR
Control		2.41 $\pm$ 0.37		17.4 $\pm$ 4.7	
CS		8.07 $\pm$ 1.91**		39.7 $\pm$ 4.8**	
CS+Nar1	5	7.07 $\pm$ 1.11	17.7%	35.2 $\pm$ 7.1	20.2%
CS+Nar2	10	5.18 $\pm$ 1.67##	51.0%	33.7 $\pm$ 6.4#	26.9%
CS+Nar3	20	3.99 $\pm$ 0.82##	72.0%	29.4 $\pm$ 4.1##	46.2%
CS+Nar4	40	3.49 $\pm$ 1.21##	80.8%	27.5 $\pm$ 5.8##	54.7%
CS+Nar5	80	3.17 $\pm$ 1.74##	86.5%	25.3 $\pm$ 3.4##	64.6%

Data are presented as mean  $\pm$  SD ( $n=8-10$ ).

Significant differences were found: \*\* $P < .01$  compared with normal control group; # $P < .05$ , ## $P < .01$  compared with CS group.

MMP-9, matrix metalloproteinase-9; MPO, myeloperoxidase.

#### Effect of naringin on CS-induced release of MPO and MMP-9 in lung tissue of rats

MPO, as an important proinflammatory and pro-oxidant mediator, is mainly released from activated neutrophils.<sup>9</sup> As shown in Table 3, activity of MPO in the lungs of CS group rats was significantly increased to 3.4-fold as compared to

that in the Con group. Naringin of 10, 20, 40, and 80 mg/kg significantly inhibited the activity of MPO in the lungs of CS-induced rats, with inhibition rates of 51.0% to 86.5%.

MMP-9, mainly secreted by lung macrophages, is considered an osteolytic enzyme and has been associated with loss of pulmonary elastin levels and adult onset emphysema in COPD.<sup>11</sup> As shown in Table 3, content of MMP-9 in the

lung tissue of the CS group was significantly increased to 2.3-fold as compared to that in the Con group. Naringin of 10, 20, 40, and 80 mg/kg significantly inhibited the content of MMP-9 in lung tissue lysate of CS-induced rats, with inhibition rates of 26.9% to 64.6%.

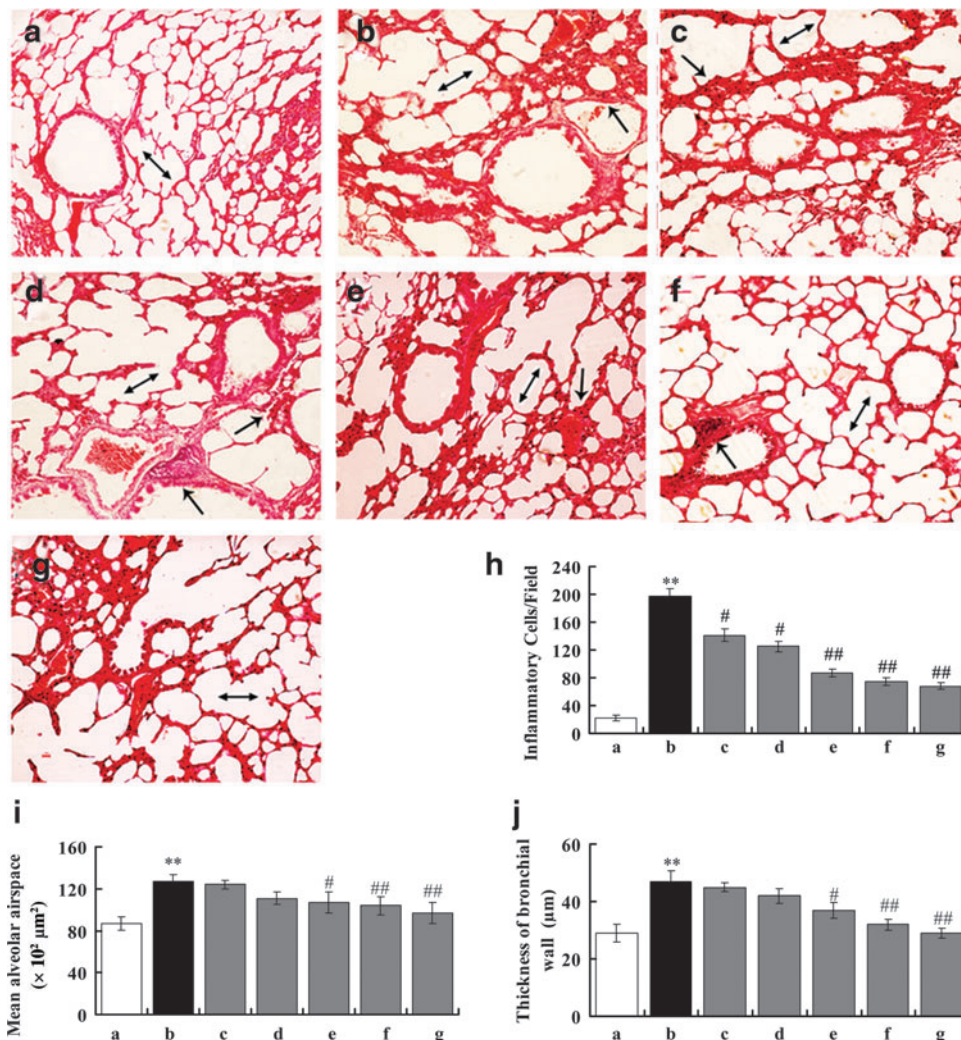
#### Effect of naringin on CS-induced histological changes

To investigate the effects of naringin treatment on the infiltration of inflammatory cells, average alveolar airspace, and thickness of bronchial wall, lung sections were prepared and observed by H&E staining. As shown in Figure 2, the lung section of the Con group showed a normal bronchoalveolar structure with few infiltration of inflammatory cells, average alveolar airspace of appropriate  $90 \mu\text{m}^2$ , as well as bronchial wall thickness of nearly  $29 \mu\text{m}$ . CS exposure markedly induced influx of inflammatory cells, thickening of bronchial wall, and expansion of average alveolar airspace. Moreover, naringin dose dependently reduced CS-induced infiltration of inflammatory cells, thickening of bronchial wall, and expansion of alveolar airspace, especially at doses of 20, 40, and 80 mg/kg, which exhibited significant differences as compared to that in the

CS group. These results suggested that naringin could attenuate CS-induced damage of lung tissue by reducing the infiltration of inflammatory cells, expansion of alveolar airspace, as well as weakening the secretion and proliferation of airway epithelium.

#### DISCUSSION

Various models of CS exposure in laboratory rats have been described over the years.<sup>2-6</sup> It is demonstrated that CS exposure directly damages the airway epithelium and activates macrophages and lymphocytes, which then generate proinflammatory cytokines TNF- $\alpha$  and IL-8, and activate neutrophils, which leads to chronic pulmonary neutrophilic inflammation.<sup>7</sup> Moreover, the neutrophils help recruit macrophages, which secretes MMP-9 and a number of inflammatory cytokines contributing to the pathogenic nature of macrophages.<sup>19</sup> Our CS-induced rat model showed characteristic pathological changes consistent with chronic pulmonary neutrophilic inflammation. Moreover, our study demonstrated that naringin significantly reduced the infiltration of neutrophils and both activities of MPO and MMP-9 in the lung of CS-induced rats, which in parallel



**FIG. 2.** Effect of naringin on CS-induced histological changes. The left lung lobes of rats were stained by hematoxylin and eosin. Slides were scanned at  $\times 100$  magnification. (a) Con group, (b) CS group, (c) CS+Nar1 group, (d) CS+Nar2 group, (e) CS+Nar3 group, (f) CS+Nar4 group, (g) CS+Nar5 group, (h) influx of inflammatory cells, (i) average alveolar airspace, and (j) thickness of bronchial wall. Data are given as mean  $\pm$  SD ( $n=3$ ). Significant differences were found: \*\* $P < .01$  compared with the control group; # $P < .05$ , ## $P < .01$  compared with the CS group. Color images available online at [www.liebertpub.com/jmf](http://www.liebertpub.com/jmf)

with the suppression in the release of cytokines, such as TNF- $\alpha$  and IL-8. These results suggest that naringin prevents the inflammation induced by CS, probably through regulation of these signal molecules.

The body weight of naringin-treated rats was greater than CS-induced rats after 8 weeks of CS exposure. This was probably because naringin prevented lung inflammation, as previous studies demonstrate that severe lung inflammation in mice caused by CS exposure is associated with weight loss.<sup>20</sup> Moreover, the feed intake in each group was weighed on the morning of each day. Our results showed that at the highest tested dose of naringin (80 mg/kg), the feed intake of rats was increased by 21.4% as compared to that in the CS group (data not shown).

As previous studies describe, oxidants and MMPs complement each other in the potential to destroy lung tissue.<sup>21–23</sup> Moreover, it is reported that MMPs also play a role in regulating inflammation through the generation of cytokines, such as TNF- $\alpha$ .<sup>24</sup> We observed that the increase of MMP-9 activity in the CS group was associated with expansion of average alveolar airspace after exposure to CS for 8 weeks. Moreover, CS-induced rats treated with naringin of 20, 40, and 80 mg/kg displayed lower MMP-9 activity and smaller alveolar airspace, probably due to less cell inflammatory influx into the airspace, and the suppression of oxidative stress provoked by CS.

Clinical studies have shown that IL-10 was reduced in patients of bronchial asthma and COPD.<sup>25</sup> Moreover, IL-10 was reported to inhibit the secretion of TNF- $\alpha$  and IL-8 from macrophages and tip the balance in favor of antiproteases by increasing the expression of endogenous tissue inhibitors of MMPs.<sup>26</sup> In the present study, we demonstrated that CS exposure significantly inhibited the release of IL-10, which was associated with previous clinical studies. Moreover, naringin of 80 mg/kg markedly elevated the release of IL-10, as well as strongly suppressed the activity of NF- $\kappa$ B.<sup>16</sup> Previous reports have revealed that IL-10 was very effective at inhibiting the activity of NF- $\kappa$ B.<sup>27</sup> This means that IL-10 should suppress the CS-induced activity of NF- $\kappa$ B, which reduces release of proinflammatory cytokines and infiltration of inflammatory cells.

In conclusion, our study demonstrated that the infiltration of inflammatory cells, activation of MPO and MMP-9, and increases in TNF- $\alpha$  and IL-8 in the lungs of CS-induced rats were associated with decreased IL-10. In this study, naringin at doses 20, 40, and 80 mg/kg elevated the release of IL-10, prevented the infiltration of neutrophils, and decreased activities of MPO and MMP-9, which resulted in the suppression of TNF- $\alpha$  and IL-8 release. Our data suggest that naringin is an effective anti-inflammatory compound to attenuate chronic pulmonary neutrophilic inflammation in CS-induced rats.

#### ACKNOWLEDGMENT

This work received funding from the National Natural Science Foundation of China (No. 81173475).

#### AUTHOR DISCLOSURE STATEMENT

The authors declare no conflict of interests.

#### REFERENCES

1. Fuchikami J, Takahashi M: Cigarette smoke-induced animal models to evaluate drug efficacy on chronic obstructive pulmonary disease (COPD). *Nihon Yakurigaku Zasshi* 2006;127:183–189.
2. Wright JL, Churg A: Animal models of cigarette smoke-induced COPD. *Chest* 2002;122:301S–306S.
3. Silva BF, Valenca SS, Lanzetti M, Pimenta, WA, Castro P, Goncalves KV, Porto LC: Alpha-tocopherol and ascorbic acid supplementation reduced acute lung inflammatory response by cigarette smoke in mouse. *Nutrition* 2006;22:1192–1201.
4. Lixuan Z, Jingcheng D, Wenqin Y, Jianhua H, Baojun L, Xiaotao F: Baicalin attenuates inflammation by inhibiting NF- $\kappa$ B activation in cigarette smoke induced inflammatory models. *Pulm Pharmacol Ther* 2010;23:411–419.
5. Castro P, Nasser H, Abrahao A, Dos RL, Rica I, Valenca SS, Rezende DC, Quintas LE, Cavalcante MC, Porto LC, Koatz VL: Aspirin and indomethacin reduce lung inflammation of mice exposed to cigarette smoke. *Biochem Pharmacol* 2009;77:1029–1039.
6. Mikura S, Wada H, Higaki M, Yasutake T, Ishii H, Kamiya S, Goto H: Erythromycin prevents the pulmonary inflammation induced by exposure to cigarette smoke. *Transl Res* 2011;158:30–37.
7. Tamimi A, Serdarevic D, Hanania NA: The effects of cigarette smoke on airway inflammation in asthma and COPD: therapeutic implications. *Respir Med* 2012;106:319–328.
8. Wang H, Ye Y, Zhu M, Cho C: Increased interleukin-8 expression by cigarette smoke extract in endothelial cells. *Environ Toxicol Pharmacol* 2000;9:19–23.
9. Kent L, Smyth L, Clayton C, Scott L, Cook T, Stephens R, Fox S, Hext P, Farrow S, Singh D: Cigarette smoke extract induced cytokine and chemokine gene expression changes in COPD macrophages. *Cytokine* 2008;42:205–216.
10. Conti P, Kempuraj D, Kandere K, Di Gioacchino M, Barbacane RC, Castellani ML, Felaco M, Boucher W, Letourneau R, Theoharides TC: IL-10, an inflammatory/inhibitory cytokine, but not always. *Immunol Lett* 2003;86:123–129.
11. Wang YJ, Jiang YL, Tang HF, Zhao CZ, Chen JQ: ZI-n-91, a selective phosphodiesterase 4 inhibitor, suppresses inflammatory response in a COPD-like rat model. *Int Immunopharmacol* 2010;10:252–258.
12. Jain M, Parmar HS: Evaluation of antioxidative and anti-inflammatory potential of hesperidin and naringin on the rat air pouch model of inflammation. *Inflamm Res* 2011;60:483–491.
13. Bodas R, Prieto N, Lopez-Campos O, Giraldez FJ, Andres S: Naringin and vitamin E influence the oxidative stability and lipid profile of plasma in lambs fed fish oil. *Res Vet Sci* 2011;91:98–102.
14. Golechha M, Chaudhry U, Bhatia J, Saluja D, Arya DS: Naringin protects against kainic acid-induced status epilepticus in rats: evidence for an antioxidant, anti-inflammatory and neuroprotective intervention. *Biol Pharm Bull* 2011;34:360–365.
15. Liu Y, Wu H, Nie YC, Chen JL, Su WW, Li PB: Naringin attenuates acute lung injury in LPS-treated mice by inhibiting NF- $\kappa$ B pathway. *Int Immunopharmacol* 2011;11:1606–1612.
16. Kanno S, Shouji A, Tomizawa A, Hiura T, Osanai Y, Ujibe M, Obara Y, Nakahata N, Ishikawa M: Inhibitory effect of naringin

- on lipopolysaccharide (LPS)-induced endotoxin shock in mice and nitric oxide production in RAW 264.7 macrophages. *Life Sci* 2006;78:673–681.
17. Zheng H, Liu Y, Huang T, Fang Z, Li G, He S: Implication of cyclic nucleotide phosphodiesterase inhibition in the vasorelaxant activity of the citrus-fruits flavonoid (+/-)-naringenin. *Planta Med* 2005;71:99–107.
  18. Zheng H, Liu Y, Huang T, Fang Z, Li G, He S: Development and characterization of a rat model of chronic obstructive pulmonary disease (COPD) induced by sidestream cigarette smoke. *Toxicol Lett* 2009;189:225–234.
  19. Onoue S, Misaka S, Aoki Y, Karaki S, Kuwahara A, Ohide A, Mizumoto T, Yamada S: Inhalable powder formulation of vasoactive intestinal peptide derivative, [R15,20,21, L17]-VIP-GRR, attenuated neutrophilic airway inflammation in cigarette smoke-exposed rats. *Eur J Pharm Sci* 2010;41:508–514.
  20. Wollin L, Pieper MP: Tiotropium bromide exerts anti-inflammatory activity in a cigarette smoke mouse model of COPD. *Pulm Pharmacol Ther* 2010;23:345–354.
  21. Pustovrh MC, Jawerbaum A, Capobianco E, White V, Martinez N, Lopez-Costa JJ, Gonzalez E: Oxidative stress promotes the increase of matrix metalloproteinases-2 and -9 activities in the fetoplacental unit of diabetic rats. *Free Radic Res* 2005;39:1285–1293.
  22. Fu X, Kao JL, Bergt C, Kassim SY, Huq NP, d'Avignon A, Parks WC, Mecham RP, Heinecke JW: Oxidative cross-linking of tryptophan to glycine restrains matrix metalloproteinase activity: specific structural motifs control protein oxidation. *J Biol Chem* 2004;279:6209–6212.
  23. Egi K, Conrad NE, Kwan J, Schulze C, Schulz R, Wildhirt SM: Inhibition of inducible nitric oxide synthase and superoxide production reduces matrix metalloproteinase-9 activity and restores coronary vasomotor function in rat cardiac allografts. *Eur J Cardiothorac Surg* 2004;26:262–269.
  24. Noirey N, Staquet MJ, Gariazzo MJ, Serres M, Andre C, Schmitt D, Vincent C: Relationship between expression of matrix metalloproteinases and migration of epidermal and *in vitro* generated Langerhans cells. *Eur J Cell Biol* 2002;81:383–389.
  25. Goswami B, Rajappa M, Mallika V, Shukla DK, Kumar S: TNF-alpha/IL-10 ratio and C-reactive protein as markers of the inflammatory response in CAD-prone North Indian patients with acute myocardial infarction. *Clin Chim Acta* 2009;408:14–18.
  26. Lim S, Roche N, Oliver BG, Mattos W, Barnes PJ, Chung KF: Balance of matrix metalloproteinase-9 and tissue inhibitor of metalloproteinase-1 from alveolar macrophages in cigarette smokers. Regulation by interleukin-10. *Am J Respir Crit Care Med* 2000;162:1355–1360.
  27. Caramori G, Adcock I: Pharmacology of airway inflammation in asthma and COPD. *Pulm Pharmacol Ther* 2003;16:247–277.