



香港大學

THE UNIVERSITY OF HONG KONG

**Graduate Employment Survey, 2002
Dental Graduates**

Supporting students

Careers Education & Placement Centre

THE UNIVERSITY OF HONG KONG
LIBRARIES



Hong Kong Collection
gift from
Career Education and Placement Centre
The University of Hong Kong

This report is prepared by

Amy Cheung
Administrative Assistant
Careers Education and Placement Centre

To whom enquiries may be directed

Tel no.: 2241-5233
Fax no.: 2559-5238
E-mail: amy.cheung@cepc.hku.hk

No part of this report may be reproduced, in any form or by whatever means,
without written permission from the Director of the Careers Education and Placement Centre (CePc),
The University of Hong Kong.

TABLE OF CONTENTS

	<i>Page</i>
I. Executive Summary	1
II. Methodology	2
III. Summary of Results	2-3
IV. Statistical Tables and Figures	

Tables

Table 1	Employment Situations of New Dental Surgeons 1997-2002	4
Table 2	First Destinations of New Dental Surgeons	5
Table 3	Job Lead Source of New Dental Surgeons	6
Table 4A	Work Locations of New Dental Surgeons	7
Table 4B	Work Areas of New Dental Surgeons	7

Figures

Figure 1	Time Taken to Secure Employment 2001-2002	8
Figure 2	Hours of Work of New Dental Surgeons 2001-2002	8
Figure 3	Average Daily Caseload of New Dental Surgeons 2001-2002	9
Figure 4	Monthly Income of New Dental Surgeons	9
Figure 5	Job Satisfaction of New Dental Surgeons	10
Figure 6	Job Satisfaction – Evaluation on Various Job Factors	10
Figure 7	Future Plans of New Dental Surgeons	11

The University of Hong Kong
Graduate Employment Situation 2002
Dental Graduates

I. Executive Summary

- 1.1 This year, a total of 55 students graduated from the Faculty of Dentistry. Valid responses were provided by 48 graduates, giving a response rate of 87%.
- 1.2 47 graduates (98%) worked as dental surgeons.
- 1.3 No graduate had set up his/her own clinic. 40% of the graduates planned to do so in future.
- 1.4 The dental graduates of 2002 took longer time to secure employment than the previous year's graduates.
- 1.5 Compared with 2001, a lower percentage of graduates worked more than 50 hours (excluding lunch hours) per week. (46% in 2002 compared with 68% in 2001.)
- 1.6 The average monthly income was \$20,218, down 4% from the previous year's \$21,053.
- 1.7 90% of the dental graduates of 2002 were satisfied with their jobs.

II. Methodology

Questionnaires were sent out to all 55 graduates in November 2002, with one subsequent mail reminder in December. Telephone interview was carried out in early January 2003 to reach all the non-respondents and those who had reported to be unemployed previously. Information on employment status was collected up to 31 December 2002 as required by the University Grant Committee (UGC). Data validation and analysis as well as compilation of statistical tables were done in late February and March 2003. A total of 48 graduates replied, representing a response rate of 87%.

III. Summary of Results

3.1 Employment Situations

Among the 48 dental graduates who responded to the survey, 98% (or 47 graduates) were in employment as dental surgeons within six months of graduation. Another 2% (or 1 graduate) engaged in further studies at the time of the survey. (Table 1 on p.4)

3.2 Employment Destinations of New Dental Graduates

All the 47 graduates who were in employment as dental surgeons provided information on their employment destinations. 34% (or 16 graduates) of these graduates were employed by private clinics, 23% (or 11 graduates) by the Prince Philip Dental Hospital, 28% (or 13 graduates) by Community Clinics.

3.3 Time Taken to Secure Employment

The time taken to secure employment was longer than the previous year. By September 2002, 68% of the 2002 graduates had secured full-time employment, compared with 96% in 2001. (Figure 1 on p.8)

3.4 Job Lead Source

Job notices posted in the Faculty accounted for 30% of the job leads. Dental Association Newsletters, friends and relatives both accounted for 18%. (Table 3 on p.6)

3.5 Workload

The working hours of the new dental surgeons ranged from less than 30 hours to more than 70 hours per week. (Figure 2 on p.8)

Around 32% of the graduates of 2002 attended to more than 10 treatments per working day, compared with 8% in 2001. (Figure 3 on p.9)

3.6 Income

The monthly income of the dental graduates of 2002 ranged from \$10,000 to \$28,000. The median monthly income was \$20,000, same as 2001. The average monthly income was \$20,218, representing a decrease of 4% from the previous year's \$21,053. (Figure 4 on p.9)

3.7 Work Locations and Areas

48% of the dental graduates worked on the Hong Kong Island. (Table 4A on p.7). 63% of them worked in residential area. (Table 4B on p.7)

3.8 Job Satisfaction

90% of the dental graduates were very satisfied or quite satisfied with their jobs (85% in 2001). The most important factors of satisfaction were responsibility given, working conditions, and nature of work. Dissatisfaction stemmed mainly from supervision given. (Figures 5 & 6 on p.10)

3.9 Future Plans

Around 40% of the dental graduates planned to set up private practice in future (44% in 2001). 43% indicated a wish for hospital / clinic work, compared with the previous year's 30%. (Figure 7 on p.11)

IV. STATISTICAL TABLES AND FIGURES

Table 1
EMPLOYMENT SITUATIONS OF NEW DENTAL SURGEONS
1997 - 2002

	1997	1998	1999	2000	2001	2002
Population	36	43	50	58	45	55
No. of respondents	32	40	45	52	43	48
Response rate	(89%)	(93%)	(90%)	(90%)	(96%)	(87%)
1. Employed (as dental surgeon)	31 (97%)	32 (80%)	42 (93%)	48 (92%)	41 (95%)	47 (98%)
2. Full-time further studies	0 (0%)	1 (2.5%)	0 (0%)	0 (0%)	0 (0%)	1 (2.1%)
3. Unemployed	0 (0%)	7 (18%)	3 (6.7%)	4 (7.7%)	2 (4.7%)	0 (0%)
4. Emigrated/Returned to home country	1 (3.1%)	0 (0%)	0 (0%)	0 (0%)	0 (0%)	0 (0%)

Table 2
FIRST DESTINATIONS OF 2002 NEW DENTAL SURGEONS

DESTINATION	2002
Community Clinics *	13 (28%)
(i) Non-profit making agencies subvented by Government	7
(ii) Commercial organizations	6
Prince Philip Dental Hospital	11 (23%)
Private Clinics	23 (49%)
(i) as associates or partners	7
(ii) as paid employees	16
TOTAL NO. OF JOBS HELD	47 (100%)

* Community Clinics are those run by non-profit making or commercial organizations.

Table 3

**JOB LEAD SOURCE
FOR 2002 NEW DENTAL SURGEONS**

JOB LEAD SOURCE	NO. OF GRADUATES
Faculty Job Notices*	12 (30%)
Careers Education and Placement Centre	1 (2.5%)
Lecturers	4 (10%)
Dental Association Newsletters	7 (18%)
Alumni	3 (7.5%)
Newspapers	5 (13%)
Friends and Relatives	7 (18%)
Others	1 (2.5%)
TOTAL	40 (100%)

No Response = 2

* Sourced by Careers Education & Placement Centre and Faculty of Dentistry.
This table shows the number of graduates in full-time employment.

Table 4A
WORK LOCATIONS OF 2002 NEW DENTAL SURGEONS

DISTRICT	NO. OF NEW DENTAL SURGEONS
Hong Kong	19 (48%)
Kowloon	11 (28%)
New Territories	10 (25%)
TOTAL	40 (100%)

No Response = 2

Table 4B
WORK AREAS OF 2002 NEW DENTAL SURGEONS

AREA	NO. OF NEW DENTAL SURGEONS
Commercial Area	13 (33%)
Residential Area	25 (63%)
Others	2 (5%)
TOTAL	40 (100%)

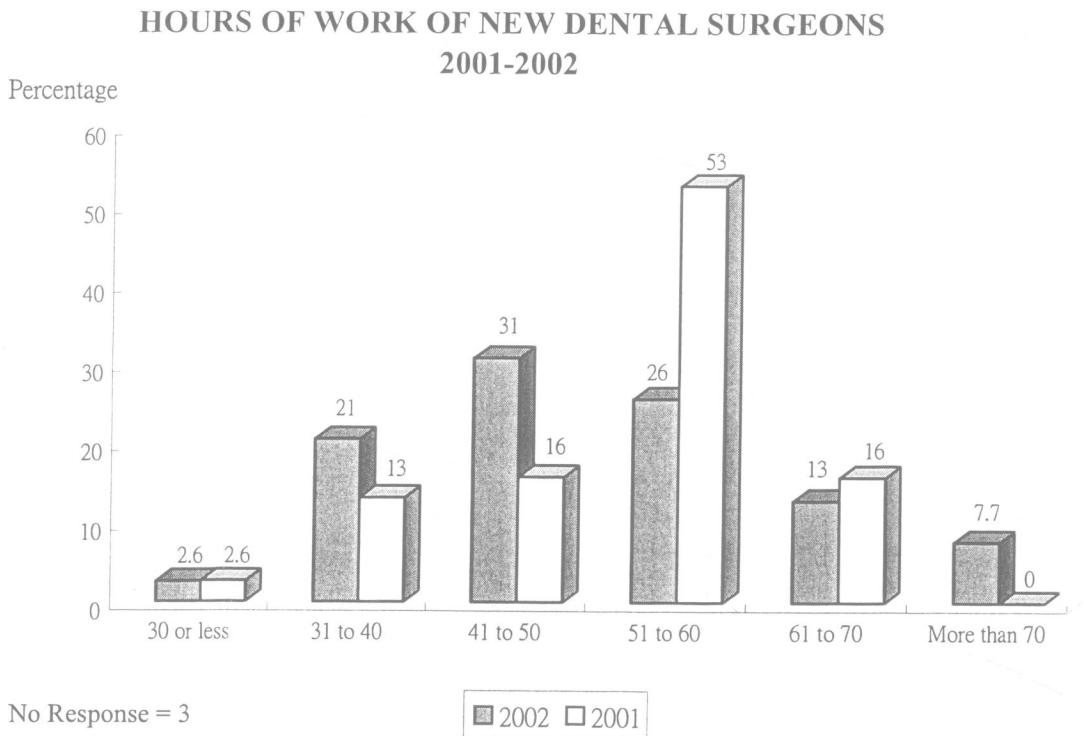
No Response = 2

These tables show the number of graduates in full-time employment.

Figure 1



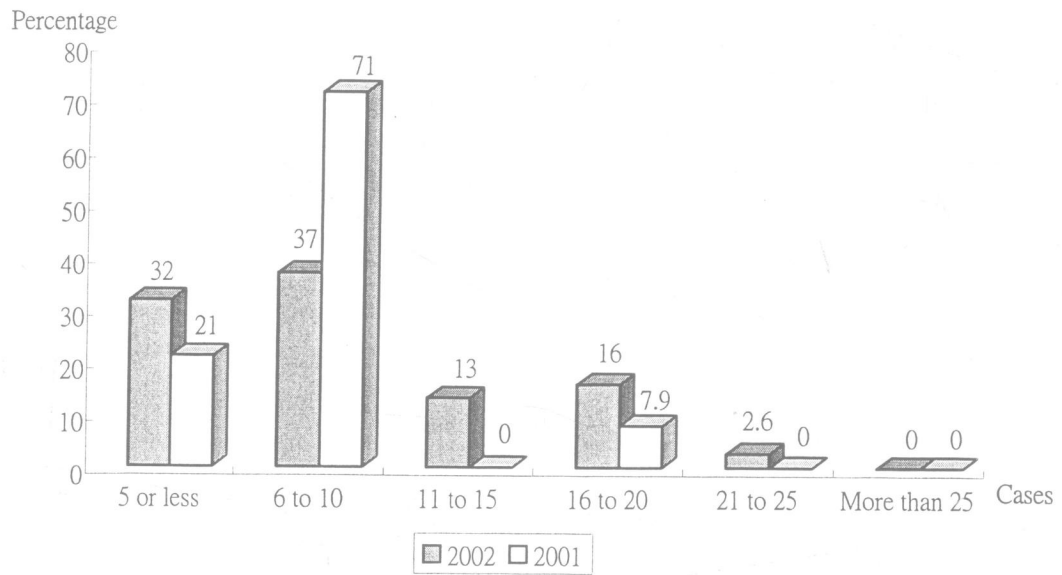
Figure 2



These figures show the percentage of graduates in full-time employment.

Figure 3

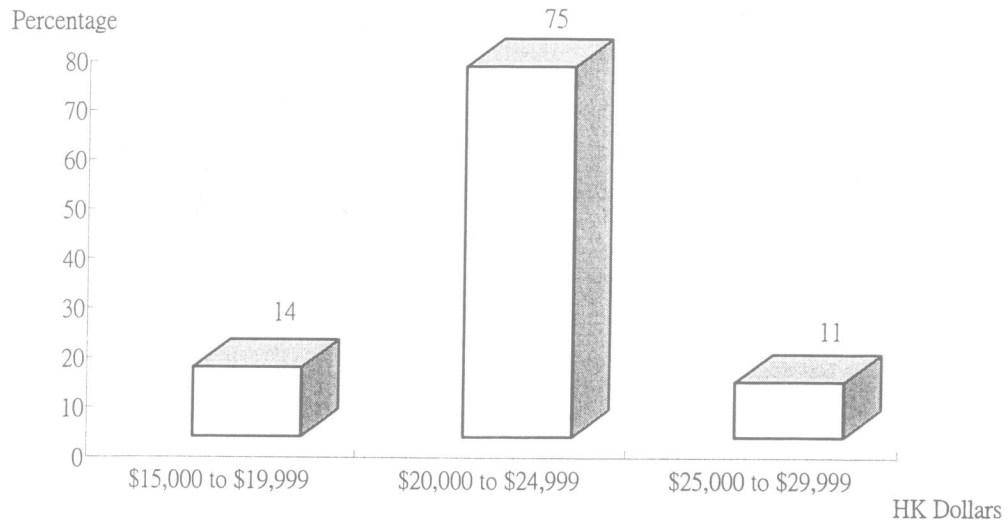
AVERAGE DAILY CASELOAD OF NEW DENTAL SURGEONS 2001-2002



No Response = 4

Figure 4

MONTHLY INCOME OF 2002 NEW DENTAL SURGEONS



Mean: \$20,218	Minimum: \$10,000
Median: \$20,000	Maximum: \$28,000

These figures show the percentage of graduates in full-time employment.

Figure 5

**JOB SATISFACTION OF
2002 NEW DENTAL SURGEONS**

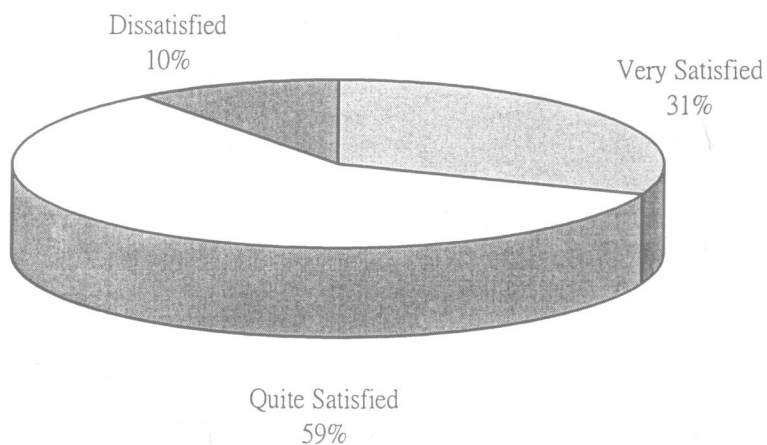
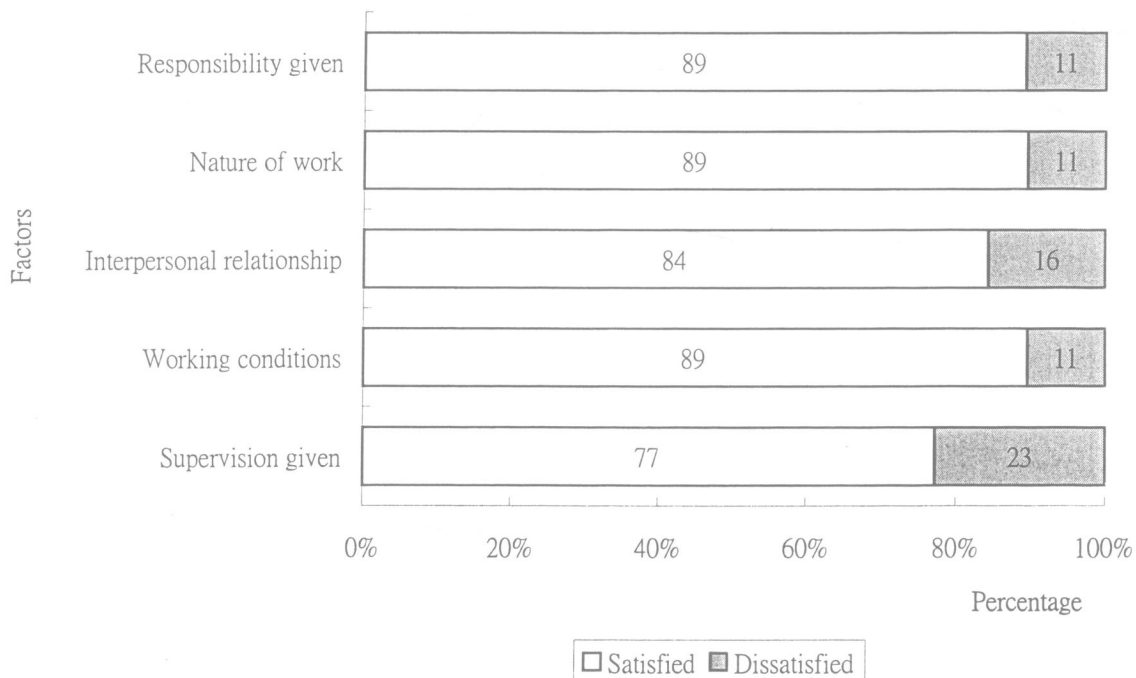


Figure 6

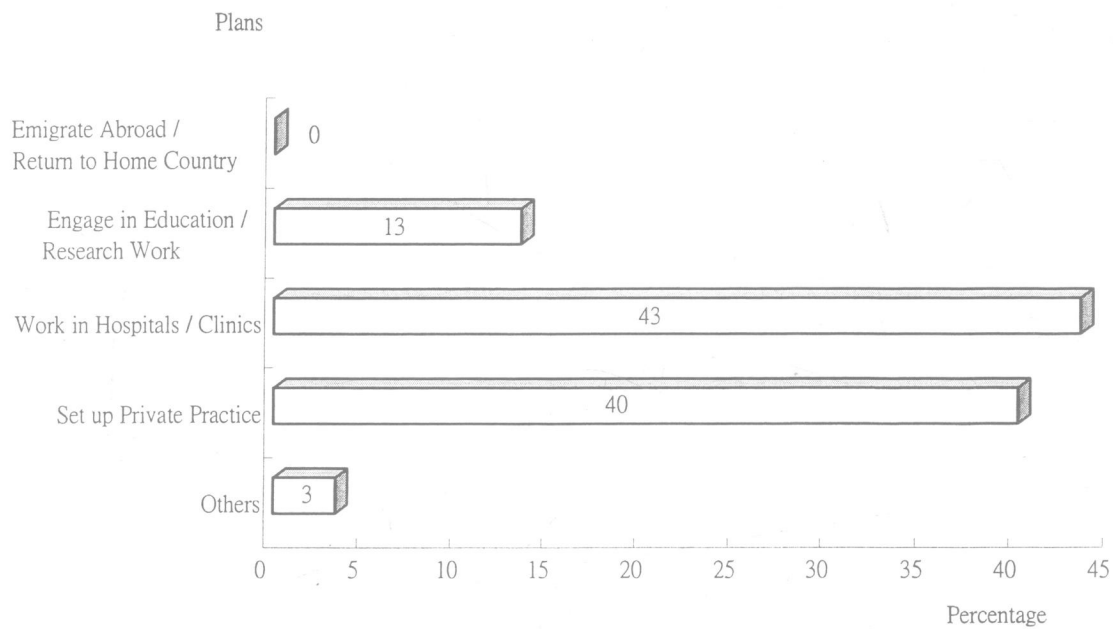
JOB SATISFACTION - EVALUATION ON VARIOUS JOB FACTORS



These figures show the percentage of graduates in full-time employment.

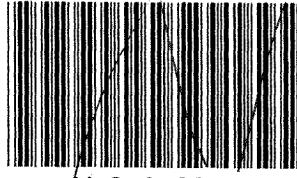
Figure 7

**FUTURE PLANS OF
2002 NEW DENTAL SURGEONS**



No Response = 12

This figure shows the percentage of graduates in full-time employment.



X18407890



A Publication of the Careers Education & Placement Centre

The University of Hong Kong

Telephone: 2859 2314

Facsimile: 2559 5238

Website: <http://www.hku.hk/cepc>



X43274645

