

Psychic Enigmas and Energies in the U.S.S.R.

By
Sheila Ostrander
and Lynn Schroeder

... Energy was a word we heard often, a sort of password to open discussion with scientists in almost every branch of psychical research. They were working to uncover new reactions of known energies or, in many cases, to uncover, they said, a new dimension, a new kind of energy. One of the biggest enigmas and one of the pivot points in the Soviet search for unknown forms of energy was Kirlian photography.

"As if there issued forth from canals in the skin, cold, powerful flames, furiously flashing solar prominences, an entire herd of 'amebali-like' lights crept from place to place, then formed one blazing bonfire, then divided into pieces again."

"A fire world." "Radiance like the aurora borealis" — "A spectacular panorama of colors, whole galaxies of lights, blue, gold, green violet, all shining and twinkling..."

These extraordinary descriptions from serious Soviet scientists were not of a psychedelic light show, but of the human body seen in a field of high-frequency electrical currents. Some psychics claim that the phenomenon described by the Soviet researchers appears to correspond with the clairvoyantly perceived "etheric body," or "aura".

Semyon and Valentina Kirlian, a husband and wife team from Krasnodar near the Black Sea discovered this new form of photography some 30 years ago. The Kirlians developed a technique of photographing with high-frequency electrical field involving a specially constructed high-frequency spark or lamp generator, tuned up and down between 75,000 to 200,000 electrical oscillations per second. Their first photographs showed turquoise and reddish-yellow patterns of flares coming out of specific channels within leaves. A magnified picture of a finger showed craters of light and flares, some parts of it looking like a jack o' lantern with glowing lights inside.

By the 1960s research on the bioluminescence revealed by Kirlian photography was going forward in many Soviet universities and research institutes. Perfected techniques of photographing the play of high-frequency currents on humans, plants and animals, as well as on inanimate matter and the maze of vari-colored energy they have revealed around us, have set Soviet science on the track of some striking discoveries about the energetic nature of man.

The Kirlians' discovery has led Soviet scientists to postulate there is a "bio-plasma body" (an "etheric" or "psychic" body) interpenetrating the physical body. This "energy body," they feel, might be the underlying pattern which determines the shape of the physical body. Scientists at the Kazakh State University at Alma-Ata have found, for instance, that illnesses tend to show up in advance as a disordered play of flares from the "bio-plasma" long before they manifest in the physical body. ("Bio-plasma" is a term coined by the Soviets for this "energy.")

For centuries, psychics have claimed to see "phantom limbs" — amputated limbs appeared to still be visible in an "etheric form." Kirlian photographs have shown similar phenomenon. Even though one third of a leaf had been cut away, the "bio-plasmic" pattern of the entire leaf apparently still showed up in the photographs made in a high-frequency field.

The Kirlian process, the Soviets report, has many applications in agriculture, nutrition, medicine, dentistry, and geology. Soon there may be more areas of use as researchers link Kirlian photography with lasers; with the electron microscope; with thermography (heat photography); and with computers to instantly analyze the spectra of colors appearing in the vari-colored flares from the living body.

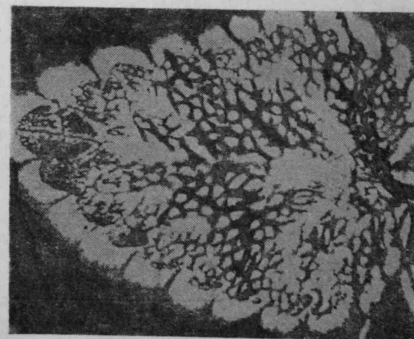
For psychical research, this new process holds promising possibilities. It may help us discover more about psychic healing, telepathy, dowsing, "eyeless sight," PK, and some forms of precognition.

The Kirlians tested the hands of a famous Soviet healer before and during the laying on of hands. They were able to photograph remarkable changes in the pattern of the flares coming from his hands while he was healing, almost as if he were giving the patient a kind of energy transfusion. The Kirlians postulate that the changed flare pattern may be a kind of "information transfer" which stimulates the patient's "bio-plasma".

The Kirlians also discovered that there are certain points on the surface of the skin that radiate flares more forcefully than the skin around them. They found that these particular points appeared to match the 700 points on the skin charted by the ancient Chinese method of treating disease — Acupuncture. These particular points also have higher electrical conductivity than the skin around them as measured by a new Soviet electronic device — the tobiscope. A young physicist, Victor Adamenko, discovered that by getting readings from several acupuncture points it is possible to objectively measure changes in the body's "bio-plasmic energy." When Adamenko and Dr. V. Raikov tested out the new technique with hypnosis, they found that the flow of "bio-plasma" energy between acupuncture points responded directly to the hypnotist's commands. In other experiments, researchers found that the "bio-plasma" reacted sharply when a telepathic stimulus was directed to a subject.

Even more startling is the work done at the Institute of Clinical Physiology in Kiev. Electrophysiologist Dr. Anatoli Podshibyakin found by charting acupuncture points that "bio-plasma" reacts instantly to changes on the surface of the sun. At the exact moment solar flares (sun spots) occur, there are changes in the electrical potential of the skin's acupuncture points. Graphs of sun-spot activity and the changes in the electrical rhythms of the skin have been found to correspond strikingly. In some way, the "bio-plasma" of the body is sensitive to these solar explosions the instant they occur even though cosmic particles ejected by the sun take about two days to reach earth.

The "bio-plasma body," Soviet scientists report, undergoes a drastic shift when placed in a magnetic field. Research on "bio-plasma" may throw light on dowsing which seems to be related to magnetic fields. "Eyeless sight" — sensing colors and shapes with the skin — may also be related to the "bio-plasma" energy. The rate at which the "bio-plasma" fluctuates appears to change according to the color near it.



An ordinary leaf displays interlocking patterns of visible bright energy when photographed with the Kirlian technique.

IN ASTHMA Becotide INHALER puts steroid therapy in its place

Becotide Inhaler contains beclomethasone dipropionate BP, a steroid which differs from those previously administered to asthmatics by aerosol in that it is highly active within the lungs in doses which are not systemically active. Used as an aerosol it provides remarkable control of asthma without causing significant systemic effects. This result is attributable to the intrinsic properties of the compound and to its localisation at the intended site of action.

Becotide Inhaler ensures for your asthmatic patients

- ☐ Effective treatment—equal to that of oral prednisolone^{1,2}
- ☐ Freedom from steroid side effects including adrenal suppression^{3,4,5}

References:

1. *Brit. med. J.*, 1972, 3, 314.
2. *Lancet*, 1973, 1, 151.
3. *Brit. med. J.*, 1972, 1, 585.
4. *Lancet*, 1972, 1, 1361.
5. *Brit. med. J.*, 1972, 2, 110.

Becotide Inhaler is an aerosol preparation of beclomethasone dipropionate BP.

Glaxo

Becotide is a trade mark of ALLEN & HANBURY LTD. LONDON E2 6LA.

Glaxo Hong Kong Limited

9th Floor, Block B, Watson's Estate, North Point, Hong Kong.

一點點

在各方面都準備不夠下，便乘快車赴廣州去了，廿四天的旅程，不但有機會與自己年齡相仿的同學一起生活，還接觸到一點祖國的人物，事物，零零碎碎的思想，但總的來說，整個旅程是愉快的不少值得回憶及引起思考的事情很多。

在到過的城市，參觀了一些工廠及水利建設，雖然在有些方面還存在着不足，今後仍須付出很大的努力，但是，可以肯定的就是：單看現在的建設，而忽視了解中國的過去，便不能體會到獨立自主，自力更生的精神，就拿新安江水發電站來說吧，多謝帝國主義老爺們及蘇聯修正主義的經濟及技術封鎖，中國人民也因更堅決要自己設計及動手建造這個水庫。

值得一提的是中國人民對黃河態度的改變，解放以前，黃河經常氾濫成災，政府沒有加以重視。一九三八年抗日時期，蔣介石軍隊到了鄭州，在花園口挖開河堤，淹沒日本軍隊的同時，也淹死餓死差不多八九十萬中國人民，所以，當時的人民是怕黃河，恨黃河，要離開黃河。但從一九五二年開始，在人民政府「要把黃河的事情辦好」的號召下，大家決心用集體智慧及力量解決黃河的問題，加厚加高河堤，以防決口氾濫，還建堤灌站，用黃河水灌溉耕地，把黃河水引入濬地，填補低地，利用黃河肥沃的淤泥種植；因此，現在人們是愛黃河，捨不得離開黃河。

各個機構接待我們的同志都沒有架子，所以驟眼看去仔細觀察之後，還是分不出他們職位的高低，杭州西湖人民公社梅家塢生產大隊的革委會主任，雖然是在鄉下土生土長，但說起話來，却有條有理，可以看出是一個出色領導人材，但態度卻平易近人。北京中國人民友好公社的領導人，風趣幽默，與公社社員非常熱絡，社員給他一個外號，叫「活寶」。與我們整個旅程一道的余同志，儘管他有豐富的人生經驗，懂的要比我們多，但與我們交談時，卻是那麼誠懇及具有耐心，真是一個值得學習及尊敬的長者。

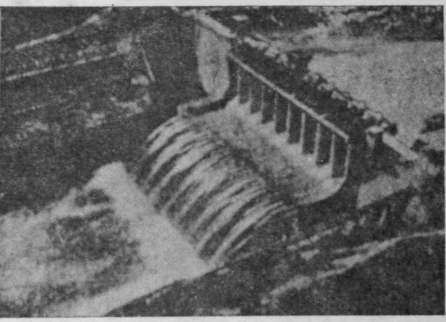
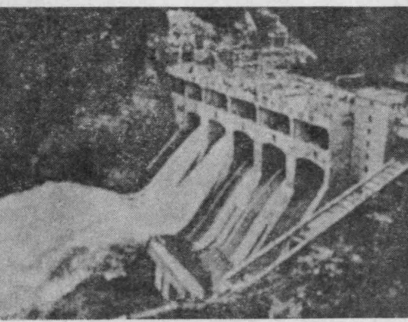
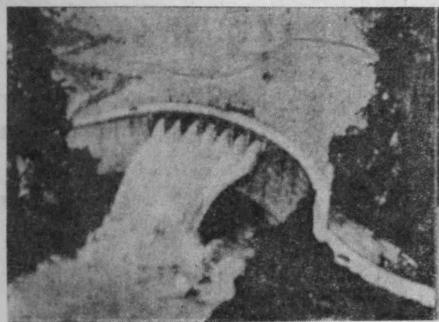
上海第六人民醫院給我留下最深刻的印象是接待我們的醫生，革命委員會負責人和護士長的謙遜態度，兩

是方可自偏是不一面自是有極只些，數觸所：有已一
有能說已偏每一子已不些的不只有情過知：這生份
找少真的要一而作的肯只報過不些形對不奇份命凌又
隨到之正醜把個足正絕錯承不復是過只下殺心多怪心的迷看
便，又悲惡自想，常望誤認過，消是不的者理。的情掌悲到
舉世少壯而已自卻的或幾界，的貼看殺絕求強弱過酒自的學是和握壯有
個上大自金成的不救撐點劇都壯訊有不或號就走走是殺人或
例自概殺。悲人悲的，而子殺只不，而有是中不或號就走走是殺人或
後吸神並大神毒病不概病後的悲都學悲者以，歌頌
的一壯會知認自都人表了：承候一它自
糊個，知認自都人表了：承候一它自
塗症也道識，候不，美大又對以要人說
有，美大又對以要人說

啟思錄

一它並能，造他覺們我相無完不是以命動得如說信，所全表現創運物我何牠牠有拋示代造，是充們們。棄我世一改在多份的必，們界條造於麼掌死有因便一更自能荒掘是那為要些幸已利謬到美份拋去不福用，自麗心棄走幸的，天人已悲情了相福路包賦類的壯和取向理反的，括的之性，勇滅懸智的原過自理所命或氣亡崖當，極因度已智以，表的，直一我端，理的，別你示但時衡羣們，但智情去於便了如候去野將把這可感改其會他果，自猶

握拒有而康，們候等一自的再成還的，便，已殺，世給一屬自而是現生而一界他，疑殺顯。代命創歌上們相問，然但的，造德因諾信，「，難「不了」不貝沒至屈他保海是不與自爾有於原們偉明比朽一殺獎人「一」的人威自作裴而。會海的倖便「因明自大沒，為威殺，有一他「，並他川們，是不糊塗的「否在塗康自川必於的成殺端要他時一



咆有罵的氣的大在眼，真！的呀一婆會論又我兒孩倒器上湧
哮喘，被得的嘔車睛睜太蠟臉，看。他着黑的，站在已到了
，公說車弄一新吐上一。！可黃多你，我們。鄰又新把起地經車車巴
因共老上翻句望會嘔我。她怕的怕看一定所我座歸衣裙來上開，上士
為衛婆的了話靜弄吐！。好了，人她啊眼說扭扭的，裳子讓。動在來在
她生婆樂的也眼睜了一。像要嘔吐呢！「我連忙閉上
。不客高鄰該有出，的的之出，的的之出，的的之出，的的之出，
的公在來不新心出，的的之出，的的之出，的的之出，的的之出，
鞋的公在來不新心出，的的之出，的的之出，的的之出，的的之出，
也一共掩弄個場鼻，我得意下所。沉料，新火我，，
弄個場鼻，我得意下所。沉料，新火我，，
了人中有，裙直帶我，她
，更嘔的，子冒着我怕真，最後的
此大吐在時肆，責

軼事一則

腎

，有催這道為衣心我，用浴外
我此理。讀了被跟士意歡弄
新小真，這弄，弄，弄，弄，弄，
事到杆，這弄，弄，弄，弄，弄，
並有現，這弄，弄，弄，弄，弄，
且增時，一書，責，掣側。你！
長反還，一責，掣側。你！
我的分明，是年還怪我地目一抹對
勇氣，教起壯敬已不奔的不！比得，得客下太歲明的受，助該年平，
氣，我起的老剛甘馳聰要我那當那而獨們了晰的瞭美過你假她同紀一替
和，人扶才自，客緊老把頭番我雀也頭煩男。德教會如的情大下她
希望。愧獨。弱的已我。！婆你棒話更無都，地孩一，育有。你。她，氣措

，這的什的你，身。去那
，淺人麼一這並體那鞋小
多這白，感個樣且不上男
麼番的我想親大應適婆的孩
的話這相呢人聲該的婆從
有出理信？，叫盡老不物袋
力自，，太別嘆自人是。中
而一你人太人會已家故一掏
動個一類，這這的，意太出
人年定應你樣她能我的太一
！約比有是對難力們。些
那十我互一待過去是一請廁
，這的什的你，身。去那
，淺人麼一這並體那鞋小
多這白，感個樣且不上男
麼番的我想親大應適婆的孩
的話這相呢人聲該的婆從
有出理信？，叫盡老不物袋
力自，，太別嘆自人是。中
而一你人太人會已家故一掏
動個一類，這這的，意太出
人年定應你樣她能我的太一
！約比有是對難力們。些
那十我互一待過去是一請廁

種截然不同的社會制度及他們很強調的無產階級感情。縱使是一個經驗豐富及掌握了精湛外科技術的醫生，卻沒有那種驚張的氣焰，對科學依舊抱着實事求是，努力不懈的態度。以在外科領域上的成就為例，可以反映出不同社會制度下廣大人民的生命及生存價值完全兩樣，在社會主義制度下，注意力是集中在如何挽救勞動人民的手和腳，使他們能為建設祖國多貢獻一分力量，在資本主義制度下，換心換腎的手術，為的是如何延長個人的壽命。參觀過醫院及一些大學後，思潮一直給一個問題纏繞着就是：怎樣學習及實行他們全心全意地為人民服務的精神？
廿四天內亦遊覽了一些名聞中外的名勝景色怡人的兩子湖，三潭印月，遊覽的人中有穿着綠色軍裝的人民解放軍，在柳浪聞鶯的一大片青草地及花朵盛開中，偶爾堅着一幅鮮紅色的標語！早上，精神抖擻的小學生，在聳立着三十年代大廈的上海街頭，唱着歌兒，踏着整齊的步伐，結隊上學去；南京莊嚴的中山陵及氣勢雄偉的長江大橋；在有幾百年歷史的故宮後，矗立着人民英雄紀念碑，宏偉的人民大會堂，以前慈禧太后個人遊憩的頤和園及昆明湖，今天擠得人山人海，一羣游泳健兒在前日裡舉着彩旗暢遊……無論在那一個地方，新與舊都可以交織成一派別具風格的景象。

古老的長城，有幾千年的歷史，它經歷了中國兩千多年的對封建時代，看到為修建它及皇宮，皇帝陵墓時洒盡血汗的人民；中國人民在日寇鐵蹄下八年的苦難生活。今天，在長城上，男女解放軍在比賽誰能最快爬到最高處，新疆族的人民在那裡遊覽休息時彈起冬不拉，還有操不同地方口音來自全國各地的人們，二十世紀七十年代長城所目睹的仍是中國人民，但卻是為建設社會主義祖國，對前景抱着樂觀態度及信心，團結向前邁進的中國各族人民。

感想

· 洵 ·

啟思

香港大學學生會
醫學會月刊

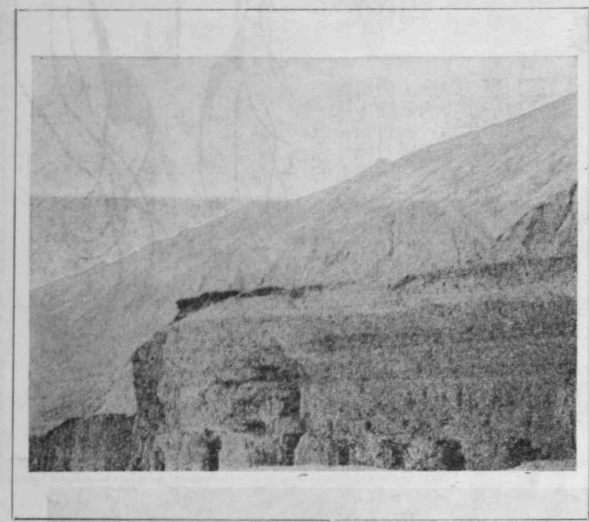
第五卷
第八期

一九七三年八月

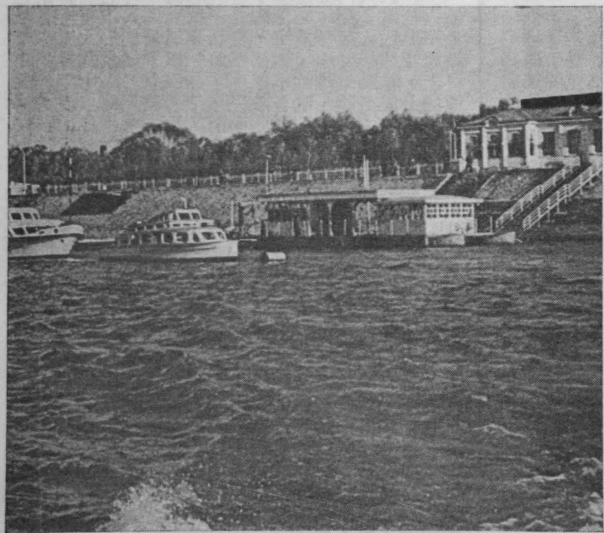
遊中國的一點感想

望

有學社，問北識大，討以跟自學對抄着不的，又明，驗所以什範她
一，會常，京和學看論通着學爲這筆一用學書有確學的有往麼學
個師作以又大實在看時常同，主些記些在員本經的校便中學呢院通過
共生爲生與學踐於那間每學看，弱，歌經，免驗目複可學校？的過去這
同與實產校爲相培些，天互那強點下兒濟一費。的審以生與原師接，廿
的同踐中外例結養地每課相裏調，課，上向發學，自畢社來生觸現三
目學場碰七，合學方隔堂討有討在對老擔讀給生對這已業會自，北在日
標之所到十理，生雙一不論問論教筆，的工樣報都脫一體京及內
間，的多科所有方段多，題一學記，還一作就名要離九會大將，
譬的即問個有以分做時，有，，方，修，可一有切農可入先，六到學來雖
如關到題廠七學析得候大不上在面考以而零費群以大到學八知，有然
同係工作有有個校問不，約明課課都試安得用用衆保學社生年識復深未
系亦廠爲聯系與題夠老四白時堂有有，心到錢全有證，會讀起份旦一能
的有，討系，社和完師堂的老前所筆學學同津由深學再工書，子大步遊
同所農論，自會解善同左再師老改記生習樣貼國厚生由作爲教一學的遍
學改村題有已足決就學右由就師進，像。的，家的的群的，的育種，了祖
住進，材時建意問共一，老指先，畢錄聽工若自感質衆有是就新杭解國
，部。選了息題同起其師出發現業音說資果擔情素推兩個得的州。大地。
系原陳文請十相的改來餘加該講在忘機以，是，，選年人到精大
宿因作科工個通能進個的以課義提筆一前所工免對，以奮全神面
舍是調則人工的力。評是指的，倡記，大以作費社對領上門面與
，大查以來廠，現教自導重由一。一學學上住會學導工，改貌南
隨家或整講和就把在評修。點同以一上流生五宿實習批作現革，京
時都教個課車以知的學及所，學自針課行都年舍踐有准經在。爲師對



消黃被淹本水次們動怎莊得是 通幸心民客縱技說對到，流負脚重分制國斷這知給東村取植一結 安的麼的身由的温，度要就同舍差決互
滅河浸沒軍決不！樣稼什綠 過動，面觀使術：斷農在分責醫點佈度家肢麼識自西去得，四中 堅社作目香老，習所亦開可學時的困相
解改死了隊口少黃的，麼油記政嗎但前存自就一肢村赤配領生必在下負再實技已都勞的大一西祖持會用的港師多廿以有夜以介，同難
放回，鄭迫，災河荒但特油得治？多覺在已成在再服脚到導，定農不担植貴術有難動成面跟醫國其制？，的個以遍在所車共紹會學，礎
區原這州近有害，燕經別一當學這少得着不了我植務醫農群這要村就，的，全機不，就積群一的教度兩學大當就平改，同自看亦有
。道次與鄭些的是一過，片我習種出份的去，未有。生村衆些放，是由困如心會開跟。燒衆二醫育嗎種校專批時行時變但提已到可需上
解，黃開州決河中片介反，們，意自外！沾幹學貢參中，據都到所有此難此全學他工就傷運一療方？不給學評社了不，是高的壁克要下
放意河封的口流華，紹正種乘才識施優響染嗎政獻觀挑幫預是農以可？階意文們農以，動衛衛針雖同予生答會，斷明現了讀報服時課
後圖改城時是，民這，每有車能就惠越如改選治的上選助防一村衛大見病級爲化的建斷針相生生，然的我們案所他弄白在，書板學就，
，把道之候人在族美，次水從緊是，，以治要以湯海學培必些去生區，人感工，辛下肢刺結工完工完國教們都，遇們通到讀其心上習別老
祖解維間，爲一的麗才行稻鄭孰爲其給住，學前醫第員養作不。工別勞住情農學動階再麻合作作善育多明對到的學考書中得的上加師
國放河，的九搖的恍車，州我什實他總治政，生六到赤及脫在作嗎動院又服技勞級植粹，面主的的制少白學的考習試的談，一的輔都
人區匯一，四藍莊然看高市們麼我們覺治治總，人醫醫治離文若？人期怎術術動感爲等近向要辦教度合：問實試上只目到像篇困導關
民分合千，醫六，稼知到探到的人們治得也？覺其民院醫理生化要在民間不呢，，情例都年工通法育不用有就讀就平的，的自這文難，
同爲，多如年但又道的，花工服的病自會後得中醫中生一產大爲中的，推？所是，，是來農着一還就的多能開爲疑用明已種章了所同
心南在人以在也是，都果園作務知都已來來身一院訓，些的革廣國生工使既以他了通按的兵四定存反學少有題開難來確以方，以學
協北四受一前是充這是樹口方的識祇有沾想爲段時爲而常醫命大，命資醫然又們解過照醫一六能在映問同進作卷，鞏以前法是在有們
力，六害九就歷滿黃樹等的針政都不知染一話，醫每見務以的百價與務勞怎創到醫這學三方尋着了，學一小，考固後怕，一參些的
治以年，三會史着河蔭，時！治是過識自層個是見生隔疾人後人分値及人動能造自生些發一向找不兩考對步組因試已，考同位觀文進
理便，八經以多堤夾當候一，意來出，已，醫這到，半病員就民之在醫員人不國已到方展以：到少個試求的討爲前學對試學成凡化度
黃利他十，年有來少岸道時，識自自在，發生樣了然年，，誕服八不約共民把家每工向如預一的問截又學提論亦只到考，們續大程，
河用們九，過帶辛從，我兩，！他所勞政覺，的一後或連主生務十同費同的得財天廠旁斷防一。題然起有高，有需的試試的優歷度幫
水又萬，當千給動前遍沒旁，只們謂調治原學，位再一醫要了，人社全克手來富用，力放爲一從不着明，然閉加知的前水越史比助
把兵把人，日多人勞是地盡畫有的愛人是來好他會同年輪是赤其口會由服是的，的農而再主團 只同什確處後卷以識態總平的系較解



總不大思看打國對的洞水民多封步的都 個門有，現所黃辦，堤變河
是能飛想到破還待。等力的姿建！人會 樣出剩又在以河好，無岸黃水
在成躍進人自是他當，工勞的時看民誘真子來餘從的從的一，屋，前沿
正爲是步類私經們然又程力藝代看群發的，的，糧一水，引，河
義阻遙，進自濟又若是，是術的故聚起，以！由食愛怕和自無是岸到
力遙而步利落果被南放，遺宮的一在致我此不黃黃沙一道一的兩
一的在思的的後稱有什京在又蹟，利個整輕們可夠河河，九路個水旁
方！望想前傳，得少麼長什是，願益問個視往住，，在五。汜流積
。所了又景統但上數人江麼誰誰和，題旅了往，要用恨淚四一滿方成
謂，指！觀人對人所大方窮流圍什，程目就今南黃黃泥年在區向淤
一目揮一念民大要享橋面盡盡，麼究中前這天糧河河上開新，，泥
星前行經的，多侵用，，極血地的竟，的樣見北，，種地中稱祇，
星雖動濟處思數犯？人如侈和下制什差建忽到調不要植，國爲少聲
之然，日處想人大國民新，汗宮度麼不設署的到願離，做，四河固
火仍於漸爲是民多內大安享，，才的多和過是現離開建了爲點水主
，存是進集先呢數人會江這揮出會政每成去在在在開黃立很了，對朝
可在思步體進！人民堂水個饑士帶治達就，多做黃河花多一主！
以着想，的的的的，力福抵交給制接！忘麼到河一圖水利把樹的建
燎缺上就利！只幸生地發，餓物人度觸 記艱自一的口利把樹的建
原點和促益單看福活下電再，，類才任 過苦供，舊人工黃木冲防
，，經使想看到，是鐵站看創天幸是什 去條自經中民程河，無坡
，但濟更，他當不有，，現造壇福爲東 是件給過國公，的無，堤
勝這上多就們前廠保防黃今條等和廣西 怎下，文變社利事村黃，
利都的人可肯中厲障支河人條，進大， 麼奮還革爲，用情莊河改